

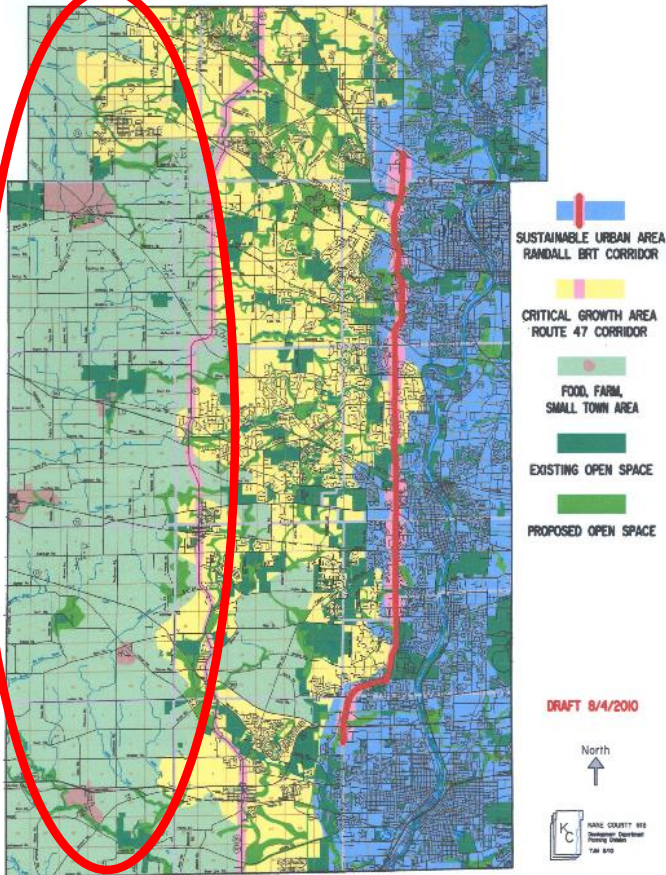


Presentation by Janice Hill, AICP
Executive Planner and Farmland Protection Manager
Kane County Food and Farm Program

Kane County: Food and Farms: Forging New Partnerships

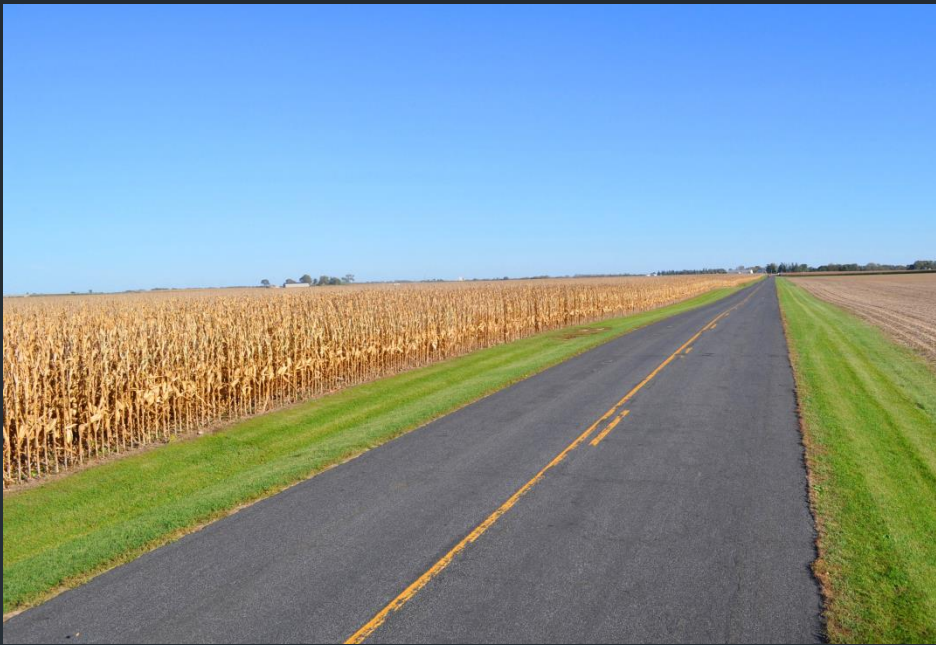
Agriculture should continue to be a desired and preferred land use...

Figure 1
2040 CONCEPTUAL LAND
USE STRATEGY MAP



50% or more of Kane County in Agriculture and Open Space





“People say farming isn’t valuable enough to trump development prices,” says Atina Diffley. “I would say the opposite is true. The money generated from development feeds a family once, then its gone. Farming feeds people Repeatedly. Food production is priceless.”

PLANNING



SPECIAL ISSUE:
Rural Challenges, Rural Choices
Saving Family Farms
Water War, Southern Style
Pipeline Safety on Trial
Small Town Successes



PARCEL LOCATION ON
AERIAL PHOTO

SCALE 1"=2000'
ATTACHMENT 3



Early Motivators for Farmland Protection:

- Land Consumption Patterns
- Family Heritage and Estate Issues







S SEROSUN
FARMS

PROTECTED AG/LIMITED DEVELOPMENT
400 acre development
on a protected eco-farm equestrian
development. 40% of land
area under donated Agriculture
Conservation Easement.





Quality Of Kane

Healthy People, Healthy Living, Healthy Communities-
It's about Quality of Life



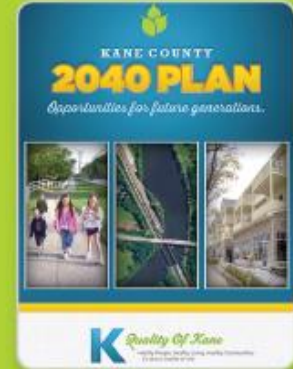
Transportation

2040 Transit Plan
IL 47 Corridor Planning Study
Bus Rapid Transit Study
Route 529 Study
2040 Transportation Plan
Bicycle and Pedestrian Plan



Community Health

Fit Kids 2020 Plan
2012-2016 Community Health Improvement Plan
Healthy Places Coalition
Community Gardens
Local Coalitions



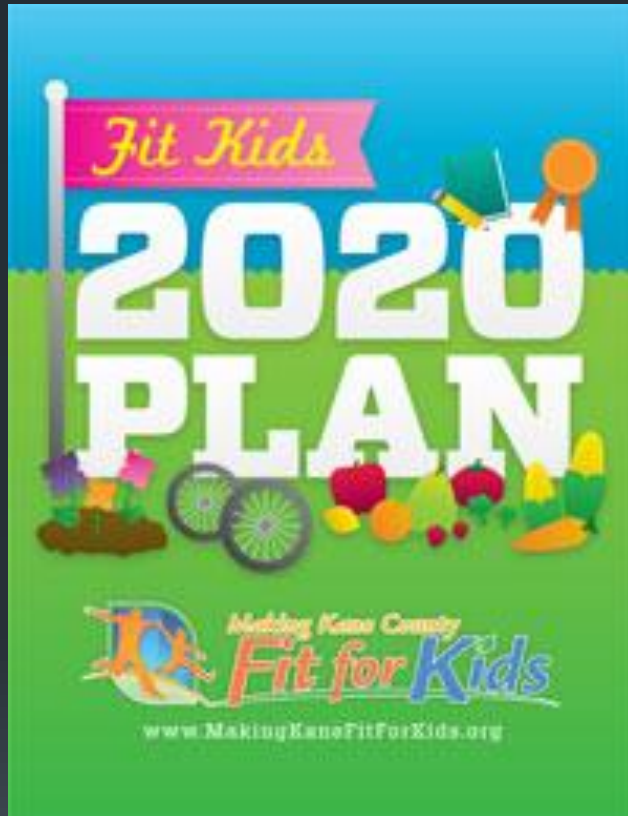
Land Use

2040 Conceptual Land Use Strategy
IL 47 Corridor Planning Study
2040 Energy Plan
Water Resources
Farmland Preservation and Local Foods
Local Planning Coordination / Assistance



Robert Wood Johnson
Foundation

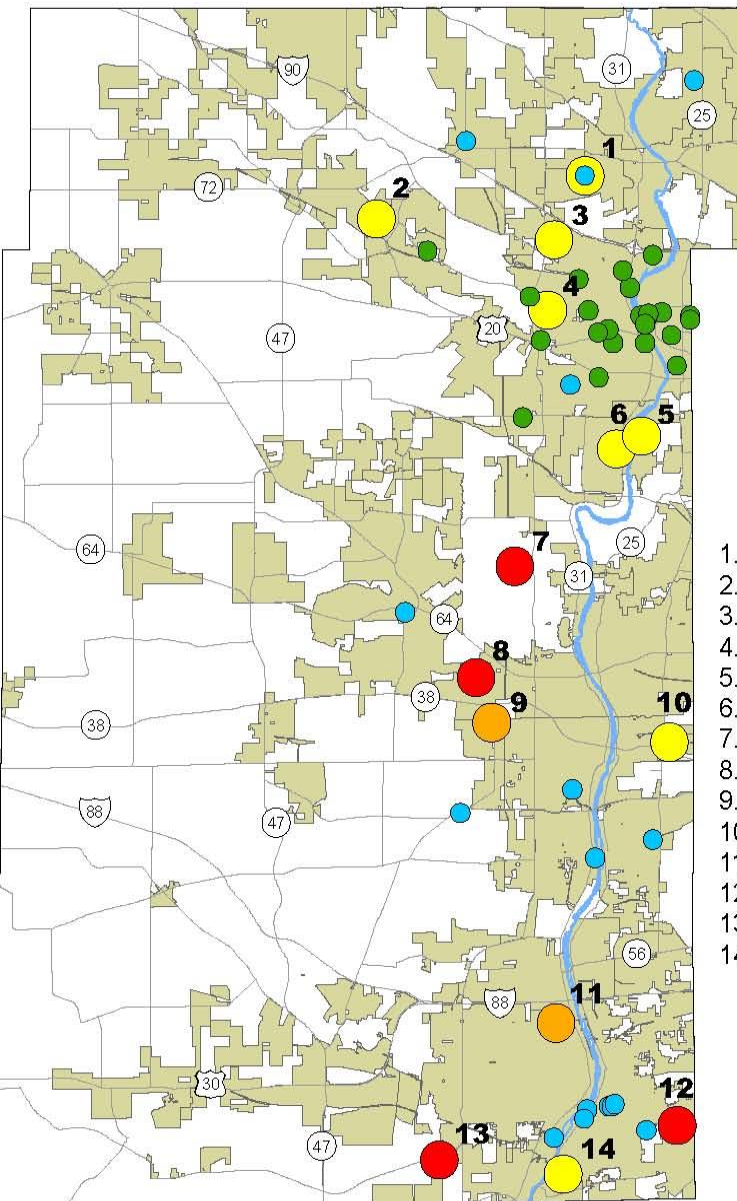
We (RWJF) have focused on the quality of care, its measurable outcomes, the equity of access to it and how to avoid getting sick in the first place



Healthy Weight for All Children—In 2007, RWJF announced that it would dedicate \$500 million to reversing the childhood obesity epidemic in America. The relentless rise in childhood obesity rates has abated, and in some areas has even decreased. Moving forward, RWJF will stress the importance of achieving a healthy weight for all of our nation's children, especially in poor communities and those of color.



Gardening in Kane County (2014)



Community Gardens

- Common Gardens (16)
- Elgin Community Garden Network (24)

Garden Plots for Lease

- 0-50 Plots
- 51-125 Plots
- 126-300 Plots

1. Village of Sleepy Hollow
2. Village of Pingree Grove
3. Sherman Hospital
4. Highland Fellowship Church
5. Raymond Gardens
6. Spring Gardens
7. Primrose Farm Park
8. James O. Breen Community Park
9. Prairie Green Preserve
10. Continental Envelope
11. Fit for Kids Garden
12. Oakhurst Forest Preserve
13. West Aurora Community Garden
14. Park Place Baptist

Total Plots for Lease: 1,398

0 1.75 3.5 7 Miles

**Garden Plots for Lease
Individual/Family
Growing
From 800-1410 since 2010**



Health Impact Assessment Training: Focus - Increasing Local Food Production



\$125,000 Grant!



THE
PEW
CHARITABLE TRUSTS

The Pew Charitable Trusts is driven by the power of knowledge to solve today's most challenging problems. Pew applies a rigorous, analytical approach to improve public policy, inform the public and stimulate civic life.

Adopted August 13, 2013

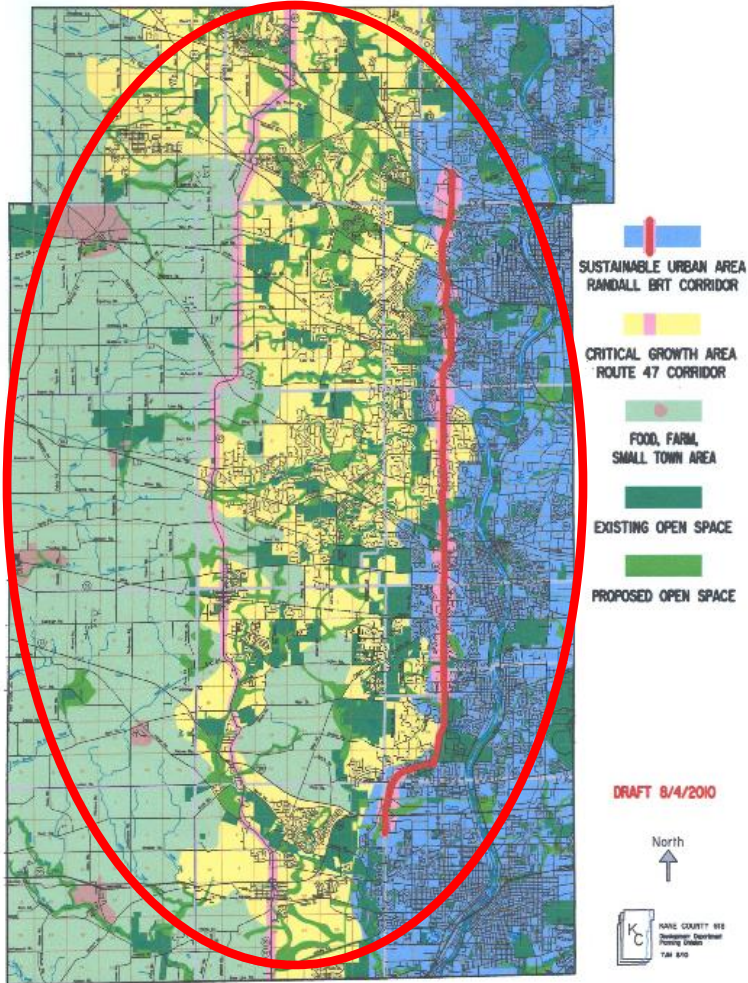


GROWING FOR KANE

HEALTH - ECONOMY - FRESH FOOD

GROWING FOR KANE

Figure 1
2040 CONCEPTUAL LAND
USE STRATEGY MAP



Farmland Protection now eligible to parcels in all locations in Kane County expanded to include:

URBAN AGRICULTURE
AND FARMS THAT PRODUCE:

- FRUITS,
- VEGETABLES,
- MEATS AND
- DAIRY

What we learned

- Expand production of locally grown fruits & vegetables in order to meet local and regional demand
- Increase ability to capture funds currently available from public and private sources directed toward local food projects
- Support our existing producers and the next generation of Kane County producers





The economic portion of this report shows that by adding approximately 1,000 acres of fruit and vegetable production to the already existing base of specialty crops grown in Kane County, more than \$7 million dollars and 103 jobs will be added each year to the county's overall economy and will support the regional market. The retail and institutional markets for locally grown food include farmers' markets; local schools; corner stores; restaurants; grocers; Northern Illinois Food Bank and the pantries it serves.



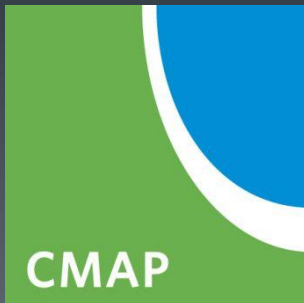
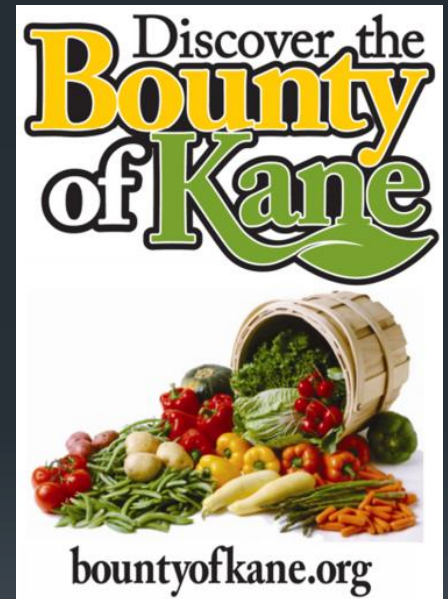
Core Partners

- Fit for Kids – Funders Consortium
- Northern Illinois Food Bank (NIFB)
- Kane County Farm Bureau



Additional Supporters

- Chicago Metropolitan Agency for Planning
- University of Illinois Extension
- Illinois Specialty Growers Association



Northwest Business Magazine

The Business Magazine of Northwest Chicagoland

Spring 2008

Home Grown in Kane County

A rising demand for locally-grown food is good news for Kane County farmers, who are scrambling to meet the demand from county residents and their urban neighbors, too. See page 130

2008

- Conventional Vegetable Farms
- Organic and sustainable farms
- Small specialty farms
- CSAs
- Community Gardens
- Personal gardens
- Urban commercial agriculture
- Hydroponics
- Hybrid developments (part farm part subdivision)
- School, church and workplace gardens
- Learning and teaching farms
- Farm history museums
- Agri-tourism



EAT
LOCAL
Shake the
Hand
that
Grows
your Food
BUY
LOCAL



Locally
Grown

2014

Local is
growing



meijer



J & J Dill

Coming from three generations of farmers, James Goebbert started farming as a high school freshman and now, at 21, employs 40 people to farm over 300 acres in peak season. His herbs, greens and pumpkins are sold locally so he can deliver the freshest possible produce.

visit meijer.com/LocallyGrown.



Look for
these signs
throughout our
Produce
Department.

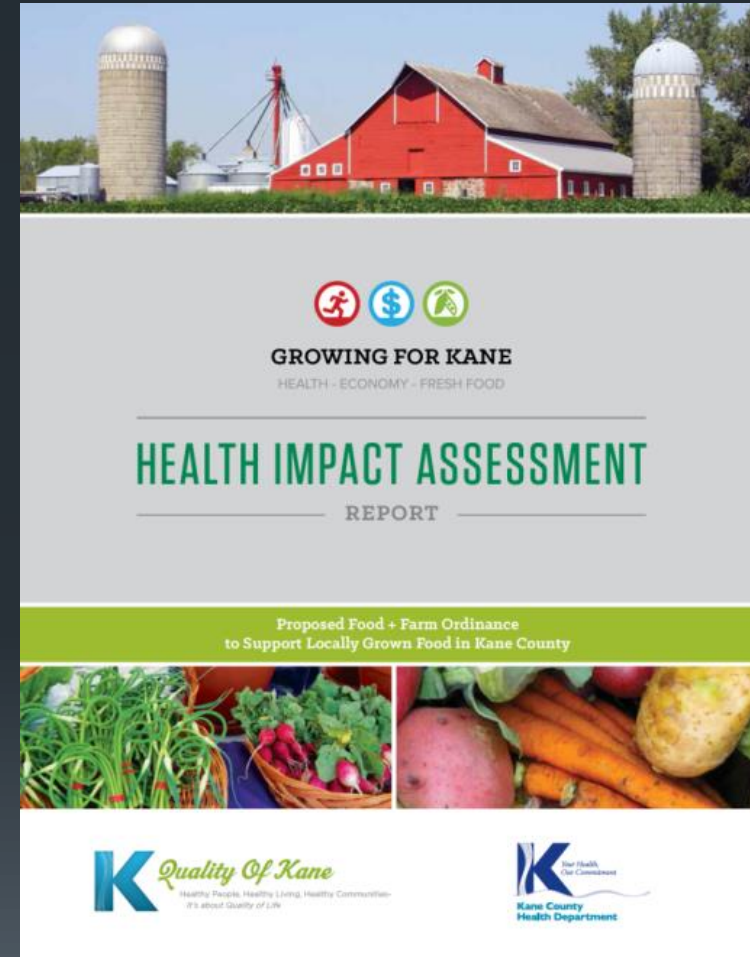



Food Hub Feasibility Study

“... a (food hub) is a means of helping farmers reduce the cost of distribution and marketing and providing a way for them to reach larger markets by filling a void in the current food distribution system.”

Funding

Fit for Kids Consortium	\$10,000
Kane County Farm Bureau	\$5,000
State of Illinois	\$7,500



Building Successful Food Hubs


A Business Planning Guide for Aggregating and Processing Local Food in Illinois

Illinois Department of Commerce and Economic Opportunity
University of Illinois Business Innovation Services
Illinois Department of Agriculture
FamilyFarmed.org

January 2012


Contact
Timothy C. Lindsey, Ph.D.
Director, Energy and Sustainable Business Programs
University of Illinois Business Innovation Services
807 S. Wright Street
Champaign, IL 61820
(630) 505-0500 ext.227
tlindsey@uiucbis.com

Jim Slama
Founder and President
FamilyFarmed.org
7115 W. North Ave. #504
Oak Park, IL 60302
(708) 763-9950
info@familyfarmed.org



FINDINGS OF THE 2013 NATIONAL FOOD HUB SURVEY

SEPTEMBER 2013



MICHIGAN STATE UNIVERSITY

CRFS

WALLACE CENTER
WINECOCK INTERNATIONAL



Feeding Our Hungry Neighbors | Volunteer. Donate. Get Involved.

WWW.SOLVEHUNGERTODAY.ORG

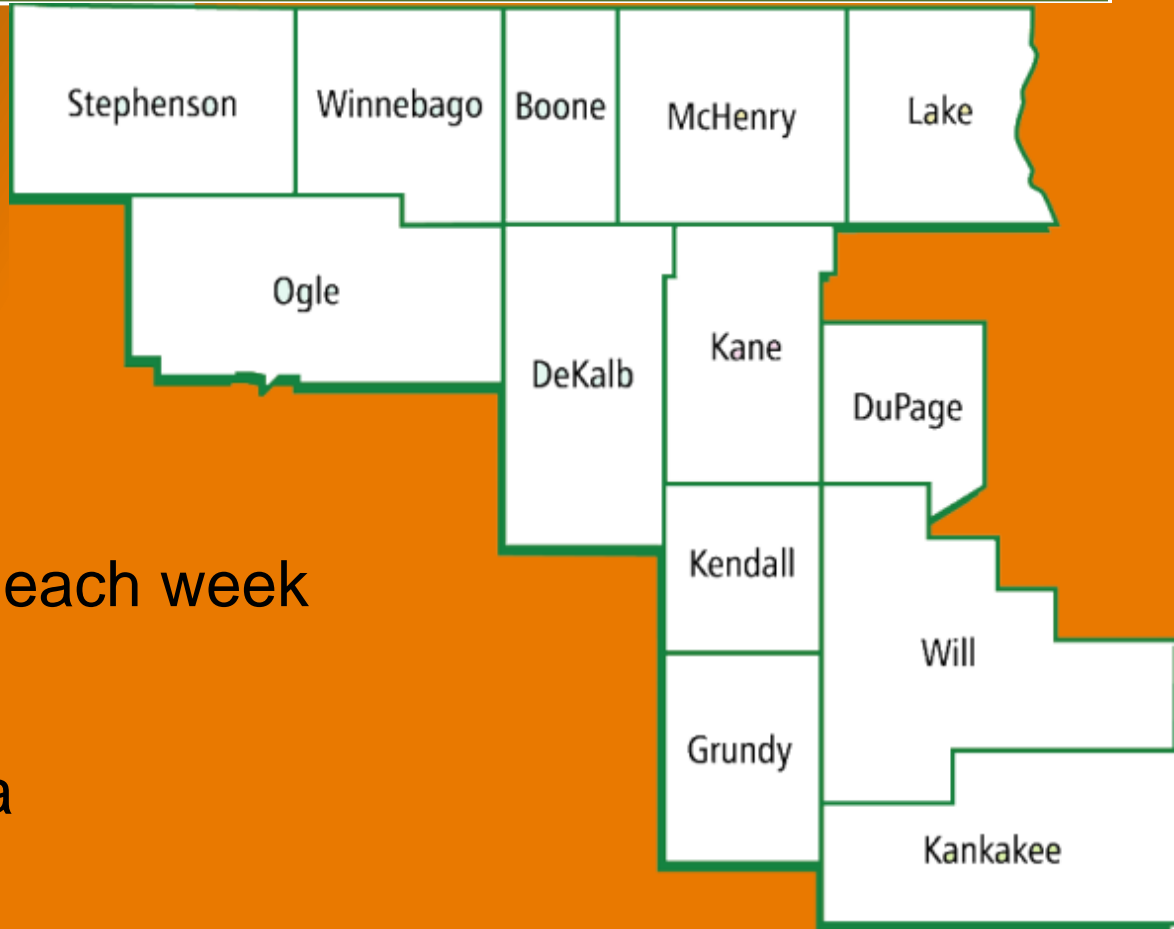
PARTNER



Northern Illinois Food Bank

Snapshot

- Nonprofit organization
- 71,000 people served each week
- 13 county service area
- Network of 800 food pantries & feeding programs



Northern Illinois Food Bank

Local Produce & Sustainability Initiatives

❑ **Growing Project**

Joint effort with Greater Chicago Food Depository using dedicated acreage, donated inputs and volunteer labor

❑ **Purchase Agreements**

*Written agreements through which Food Bank agrees to purchase specified amount of product during **season***

❑ **Food Forest**

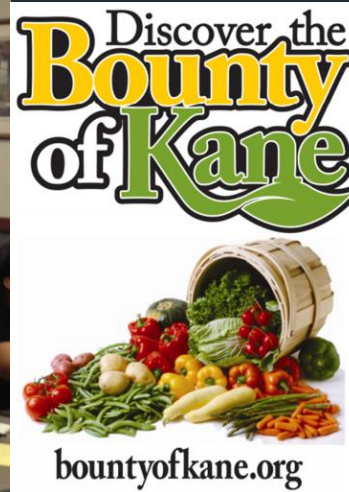
Planting in Spring 2015 – the ultimate sustainability project of a fully edible forest



MEET THE BUYER

Kane County Farm Bureau

November, 2013





Elgin Harvest Market Link and EBT Revenue	2012	2013	2014
Link	\$596	\$7,135	\$7,396
Double Value Bonus Sponsored by BMO Harris	N/A	\$6,323	\$6,777
Credit/Debit	\$1,897	\$3,753	\$5,884
Total	\$2,493	\$17,211	\$20,057



\$39,761



Jane Maxwell, MS RDN LDN



Jane Maxwell, MS RDN LDN

Aurora Farmers' Market Link Revenue	2011	2012	2013	2014 YTD
Link Sales	\$1,474	\$3,751	\$5,441	\$8,395
Double Value Bonus	\$1,350	\$3,500	\$3,065	N/A
Fresh Exchange Bonus Sponsored by Ross	N/A	N/A	N/A	\$1,300
Fresh First Program Partnership with VNA Funded by Fit for Kids	N/A	N/A	N/A	N/A
Total	\$2,824	\$7,251	\$8,506	\$9,695

\$28,276



Challenge:
Find new local
funding match
palatable to
taxpayers
and elected
officials.



United States Department of Agriculture

Overview

The Agricultural Conservation Easement Program (ACEP) provides financial and technical assistance to help conserve agricultural lands and wetlands and their related benefits.

Under the Agricultural Land Easements component, NRCS helps Indian tribes, state and local governments and non-governmental organizations protect working agricultural lands and limit non-agricultural uses of the land.

Under the Wetlands Reserve Easements component, NRCS helps to restore, protect and enhance enrolled wetlands.



USDA's Natural Resources Conservation Service offers voluntary Farm Bill conservation programs that benefit agricultural producers and the environment.

Benefits

Agricultural Land Easements protect the long-term viability of the nation's food supply by preventing conversion of productive working lands to non-agricultural uses. Land protected by agricultural land easements provides additional public benefits, including environmental quality, historic preservation, wildlife habitat and protection of open space.



For further Questions and Comments:
Janice Hill, Executive Planner
Kane County Farmland and Local Foods Manager
Kane County, IL
hilljanice@co.kane.il.us
630.232.3483