



FAYETTE ALLIANCE

GROWING OUR CITY, PROMOTING OUR FARMS





WELCOME TO LEXINGTON

- Lexington is characterized by an urban core, surrounded by productive Bluegrass farmland.
- Main industry's are: Agriculture, Health Care, and High Tech
- Known as the “Horse Capital of the World”
- An additional 60,000 people will move to Lexington by 2030. Current population is 300,000. KY Data Center, U.S. Census Bureau



RURAL FAYETTE COUNTY

- Preservation methods currently used: Urban Service Boundary, PDR Program
- Ag Industry has \$2.4 Billion impact in Fayette County; Supports 1 in 9 jobs.
- Keeneland & Fasig Tipton—2 largest horse sales facilities in the world; Bluegrass Stockyards—largest stockyards east of the Mississippi
- In 2005, World Monument Fund named the Bluegrass among the 100 most endangered cultural landscapes in the world.

FAYETTE ALLIANCE

*Growing our city,
Promoting Our Farms*

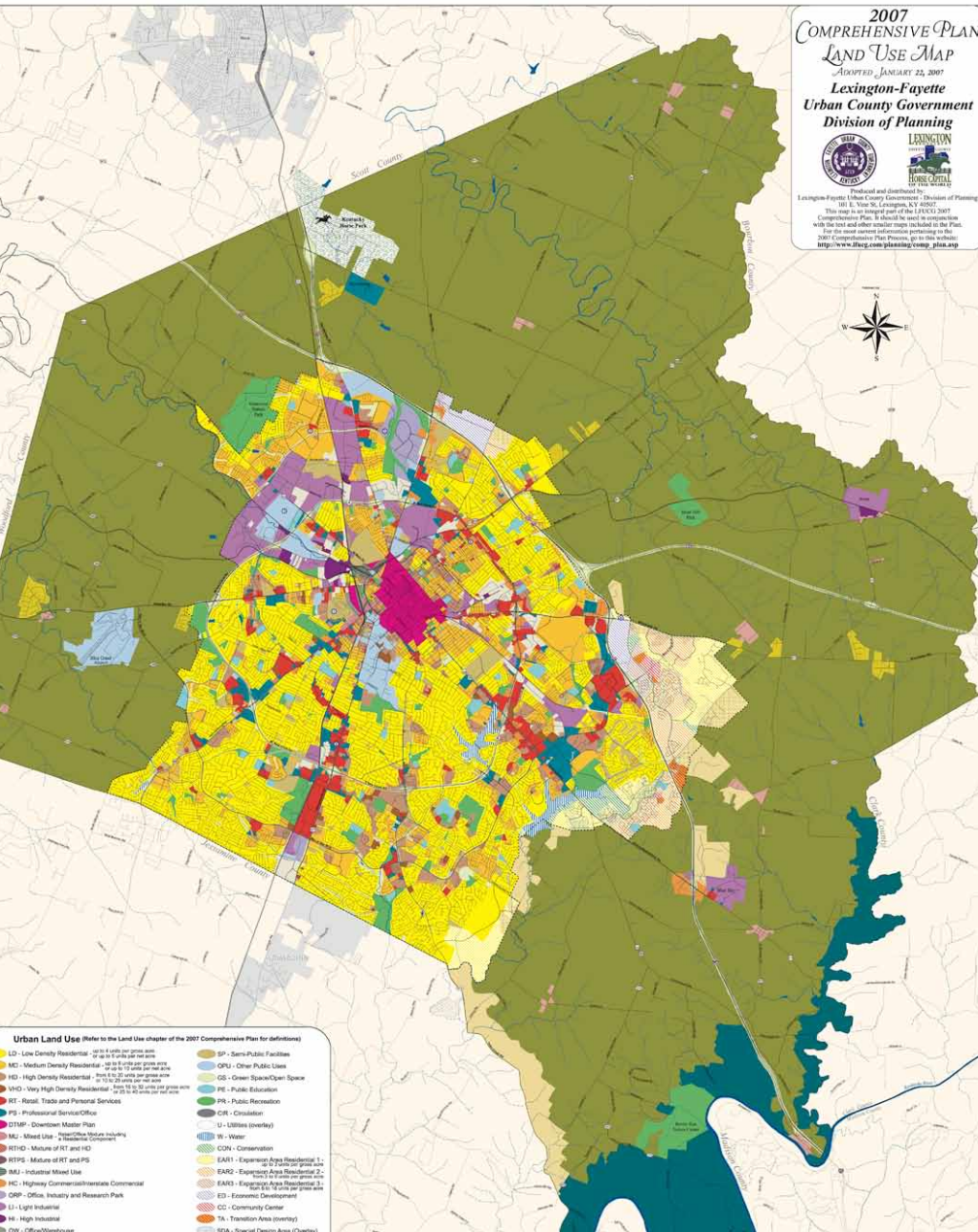


CITY OF LEXINGTON

- According to the Brookings Institution, Lexington has the largest carbon footprint, per capita, in the United States.
- In 2006, EPA sues Lexington for violations of the 1973 Clean Water Act. A Consent Decree is negotiated in 2008.
- Roughly 12,750 vacant, blighted, and underutilized acres in Lexington's city limits. 2009 LFUCG Housing Mkt Study

FAYETTE ALLIANCE

*Growing our city,
Promoting Our Farms*



CITY OF LEXINGTON *continued*

- Well educated population—39.9% of the population age 25 or older has at least a Bachelor's degree. 2013 ACS 1-yr Estimates
- Distinct Historic Neighborhoods—Chevy Chase, Kenwick, Zandale



OUR VISION & MISSION

VISION: Lexington can become the model for innovative and sustainable growth, by connecting and balancing its vibrant city with its productive and unique Bluegrass farmland.

Using legal & research-based advocacy, Fayette Alliance promotes following policies to achieve vision:

- Preserve unique & productive Bluegrass farmland
- Create a dynamic city through innovative development
- Improve our infrastructure and environment



OUR WORK & RECORD

- Worked with City Hall to usher over 85 major land-use policies into law.
- Supported over \$750 million in Infill Projects.
- Helped save over 8,000 acres of farmland from sprawl.
- Major issues we've supported include: CAP Program; no expansion of the USB; infill incentives...

FAYETTE ALLIANCE

*Growing our city,
Promoting Our Farms*



WHAT WE'RE WORKING ON

- Ag-Tourism—Balancing public access with operational needs of farms & our environment
- Downtown design guidelines & incentives
- Affordable Housing Fund
- Continued funding and support for the PDR program

**Growing our city and promoting our farms comes at a cost...
We need your help today! Learn more and get involved at:**

FAYETTEALLIANCE.COM



**Fayette Alliance
Knox van Nagell, J.D.
Executive Director
603 West Short Street
Lexington, KY 40508**

www.fayettealliance.com

FAYETTE ALLIANCE

*Growing our city,
Promoting Our Farms*