

# Wisconsin's Farmland Preservation Program: Agricultural Enterprise Areas



October 2014



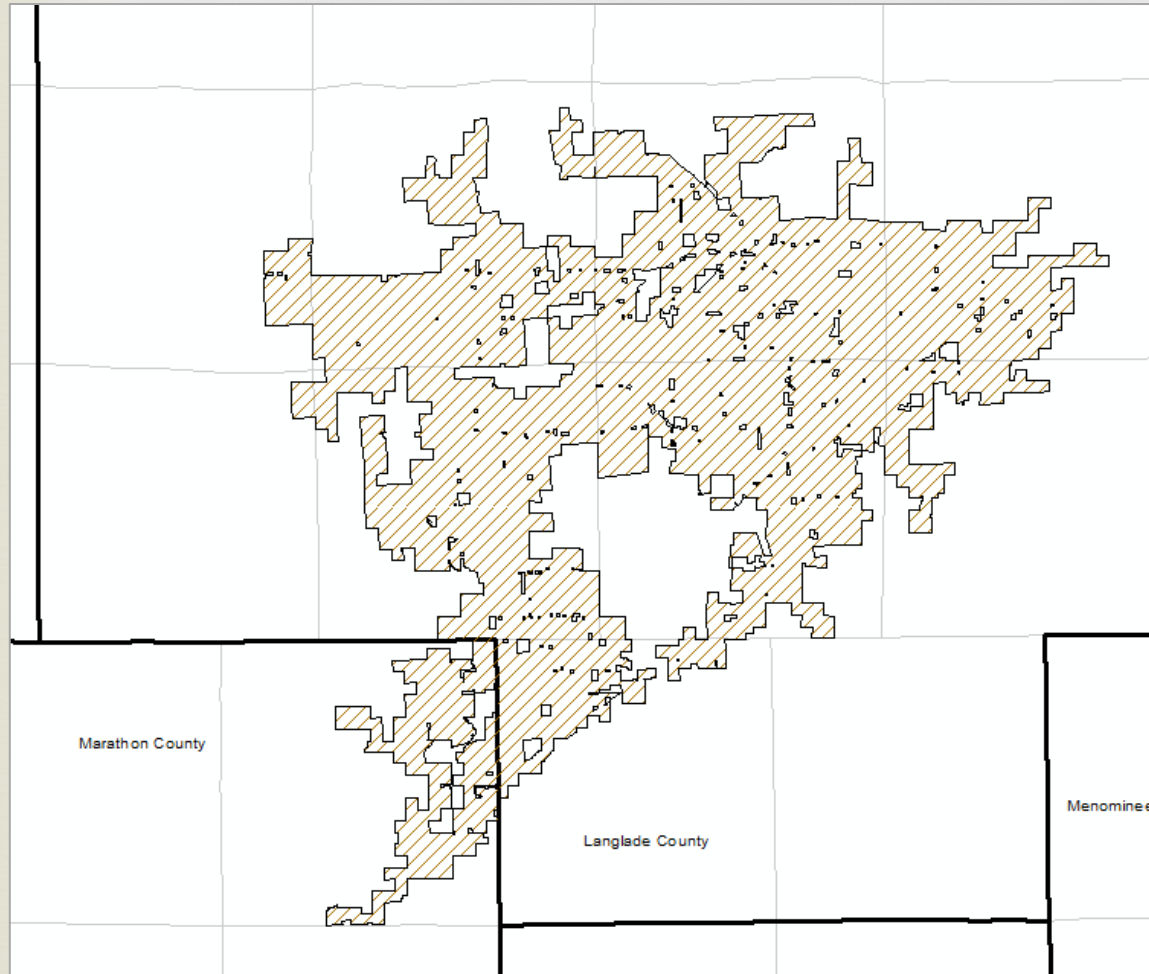
# Farmland Preservation Plan

Farmland  
Preservation  
Zoning

Agricultural  
Enterprise  
Area (AEA)  
&  
FP Agreements

Purchase of  
Agricultural  
Conservation  
Easements  
(PACE)

# Agricultural Enterprise Area (AEA)

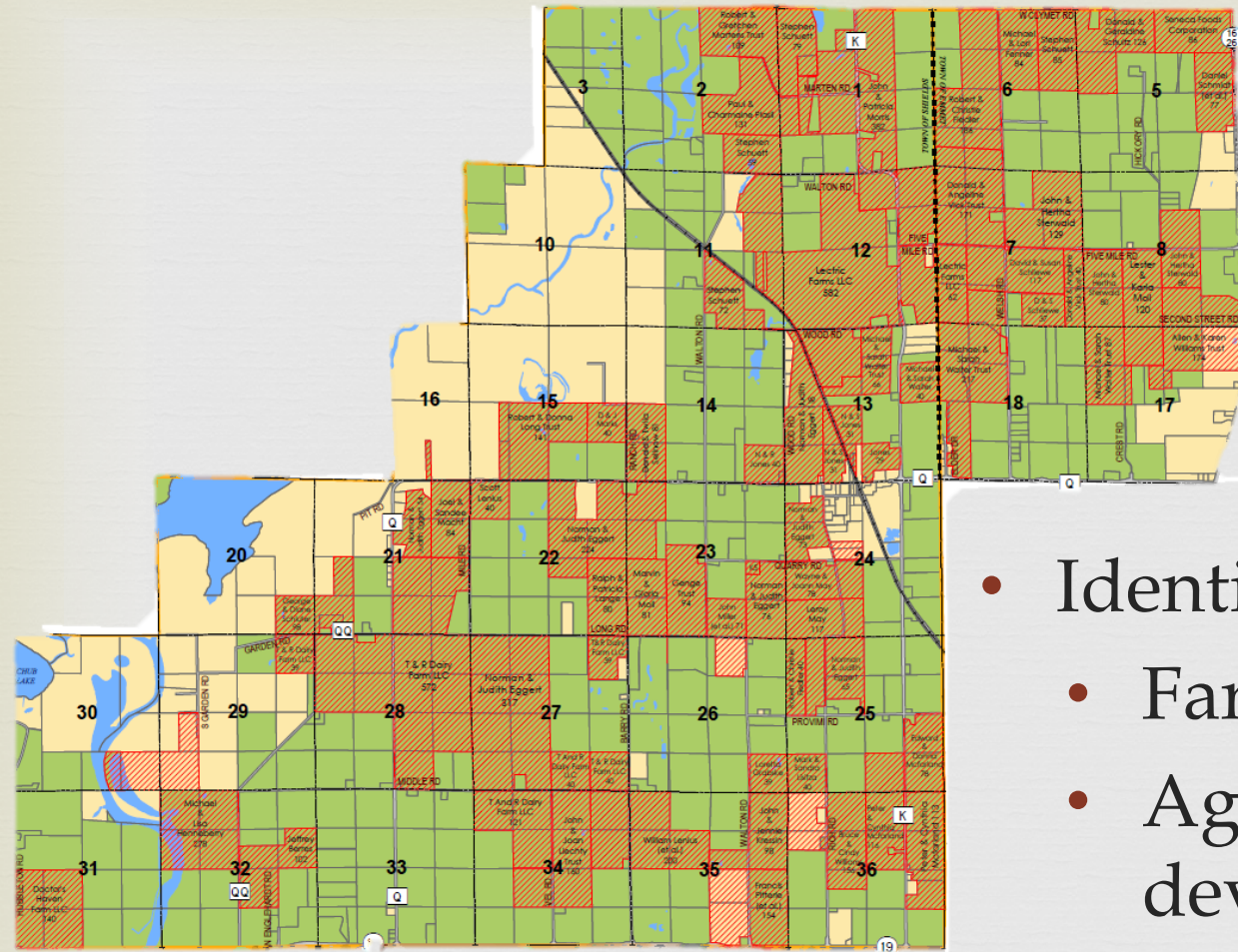


- A contiguous land area primarily devoted to agricultural use
- Designated by the state based on a locally developed petition



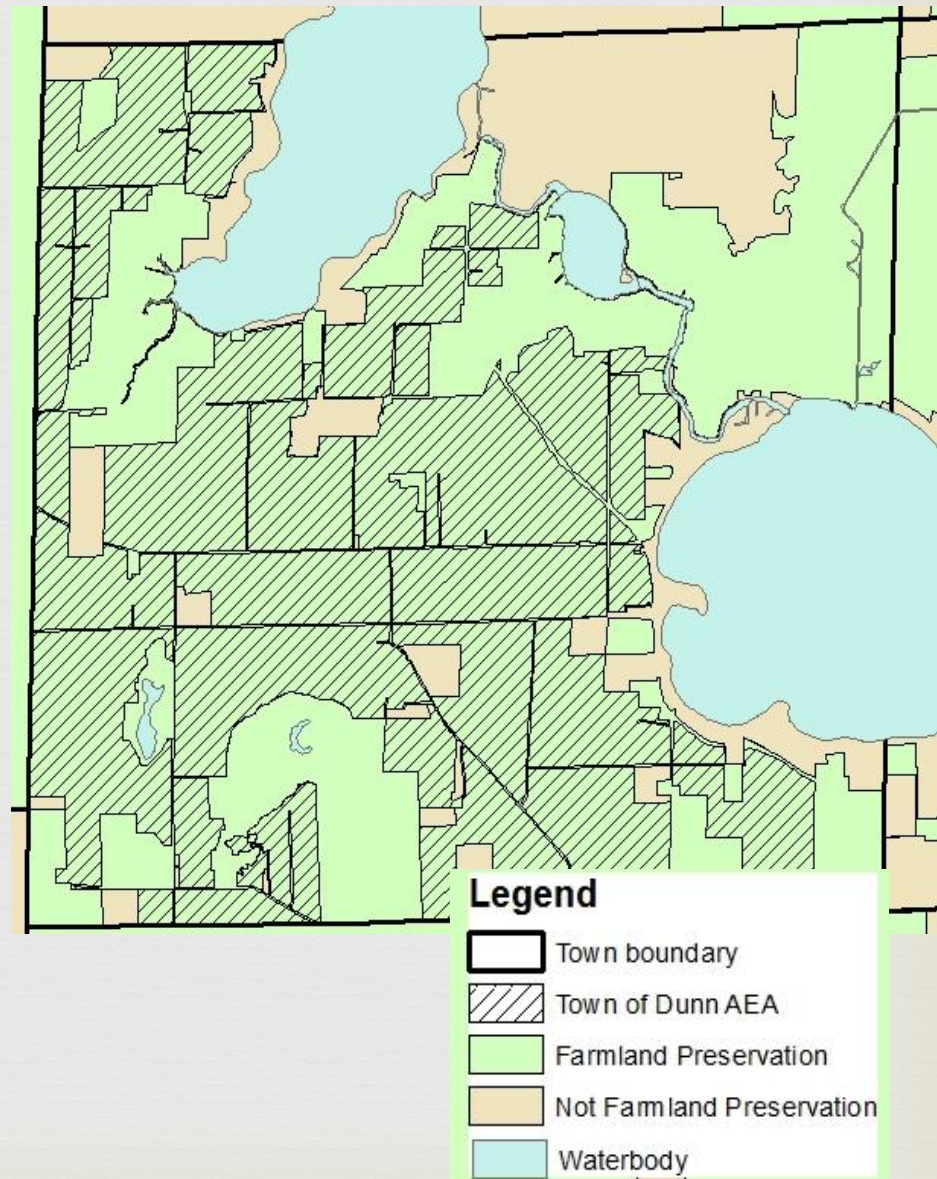
# Petition

- Identify goals
  - Farmland preservation
  - Agricultural economic development
- Obtain local support
- Draw boundary



# Requirements

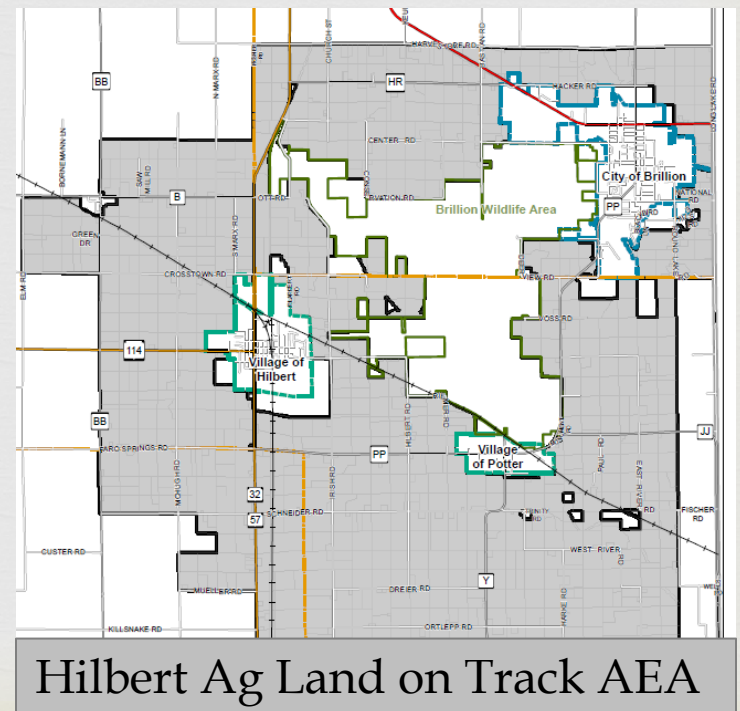
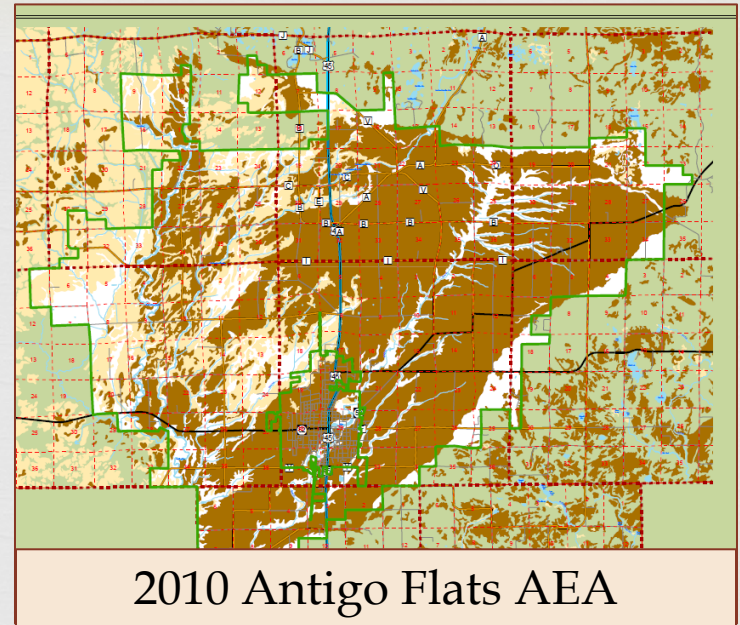
- All land in the AEA must be in an identified farmland preservation area in County's farmland preservation plan
- Land must be contiguous
- Land must be primarily in agricultural use





# Boundary Considerations

- Land use and local planning
- Unique conditions or resources
- Economic conditions and existing infrastructure



# What does AEA designation do?

- Creates eligibility to sign FP Agreements
  - 15-year contracts with the state, providing income tax credits in exchange for keeping land in agricultural use and complying with state soil and water conservation standards



# AEA Benefits

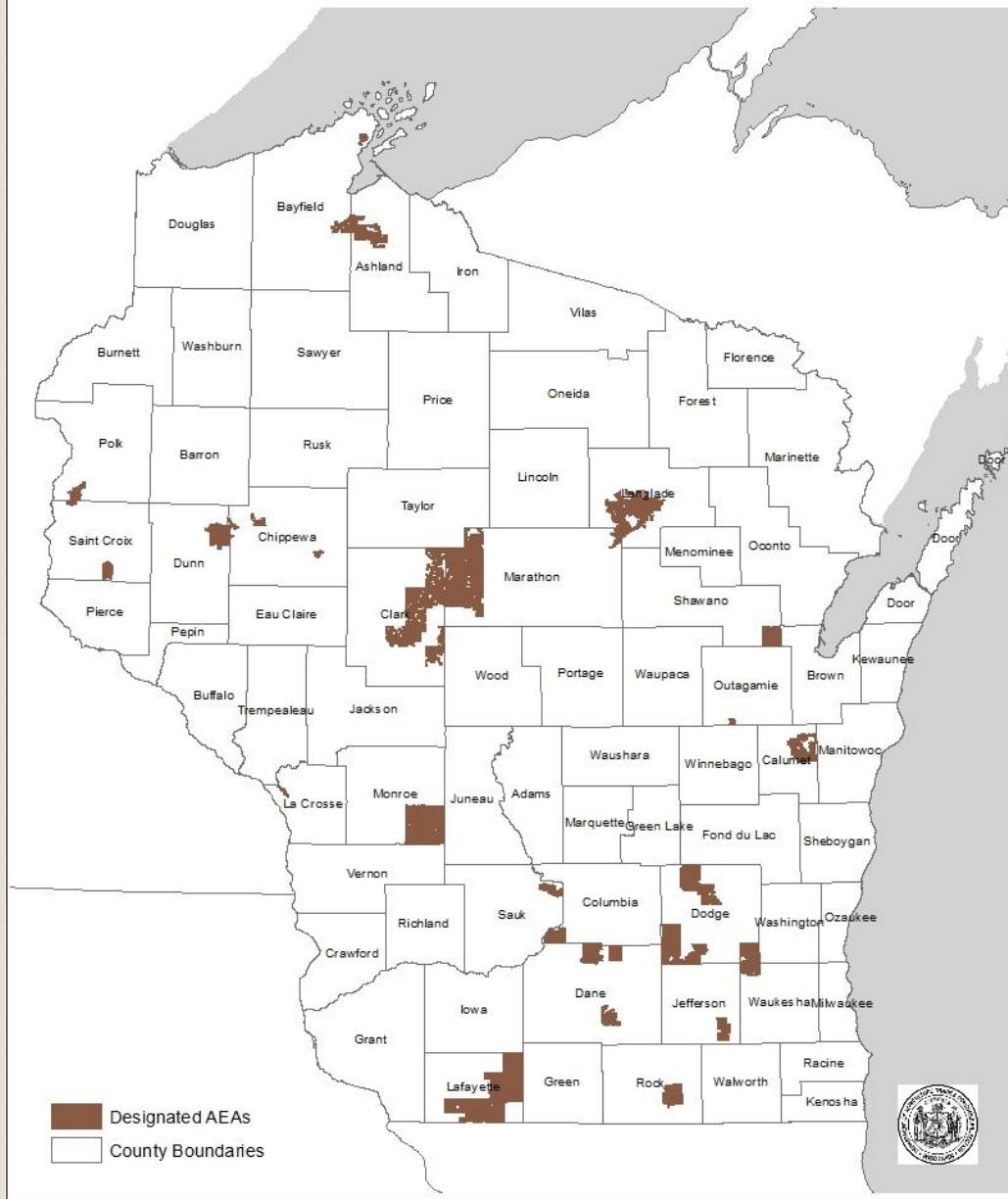
- Community planning/visioning
- Economic investment
- Local support/partnerships
- Deliberate land use decisions
- Targeting limited resources





# Agricultural Enterprise Areas (AEAs)

October 2014



## Program Summary

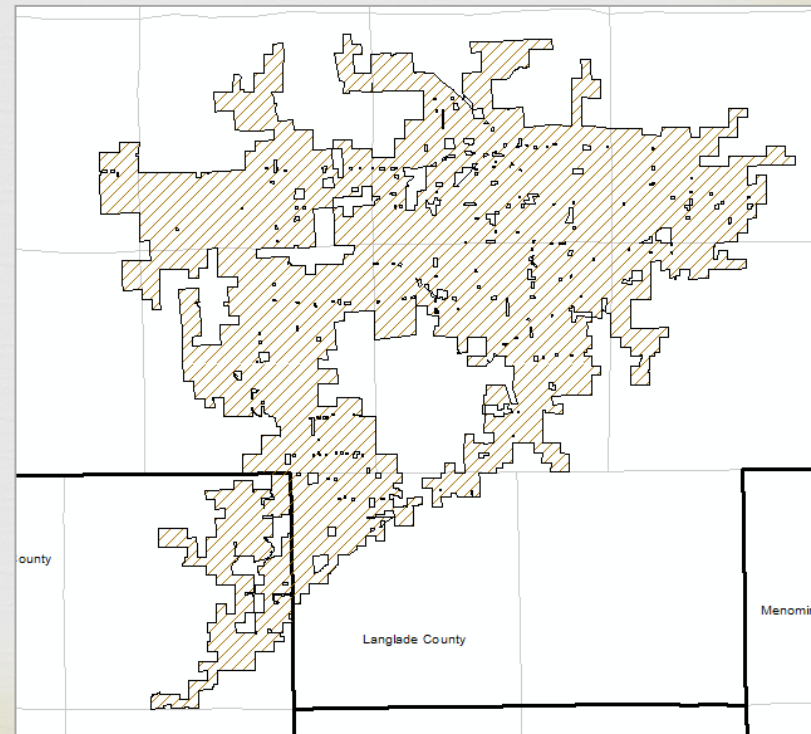
- 29 areas
- 925,000 acres
- 22 counties
- 85 towns
- 1,250 petitioners
- 5 petition cycles

# Antigo Flats AEA

- 2 counties, 9 towns, 52 petitioners
- Totals 74,000 acres
- Focus: potatoes
- Goal of local and regional market for local commodities
- Over 35% of area under an agreement (~\$265,000 in tax credits)
- Great deal of agricultural investment in area, including state-of-the-art potato packing facility

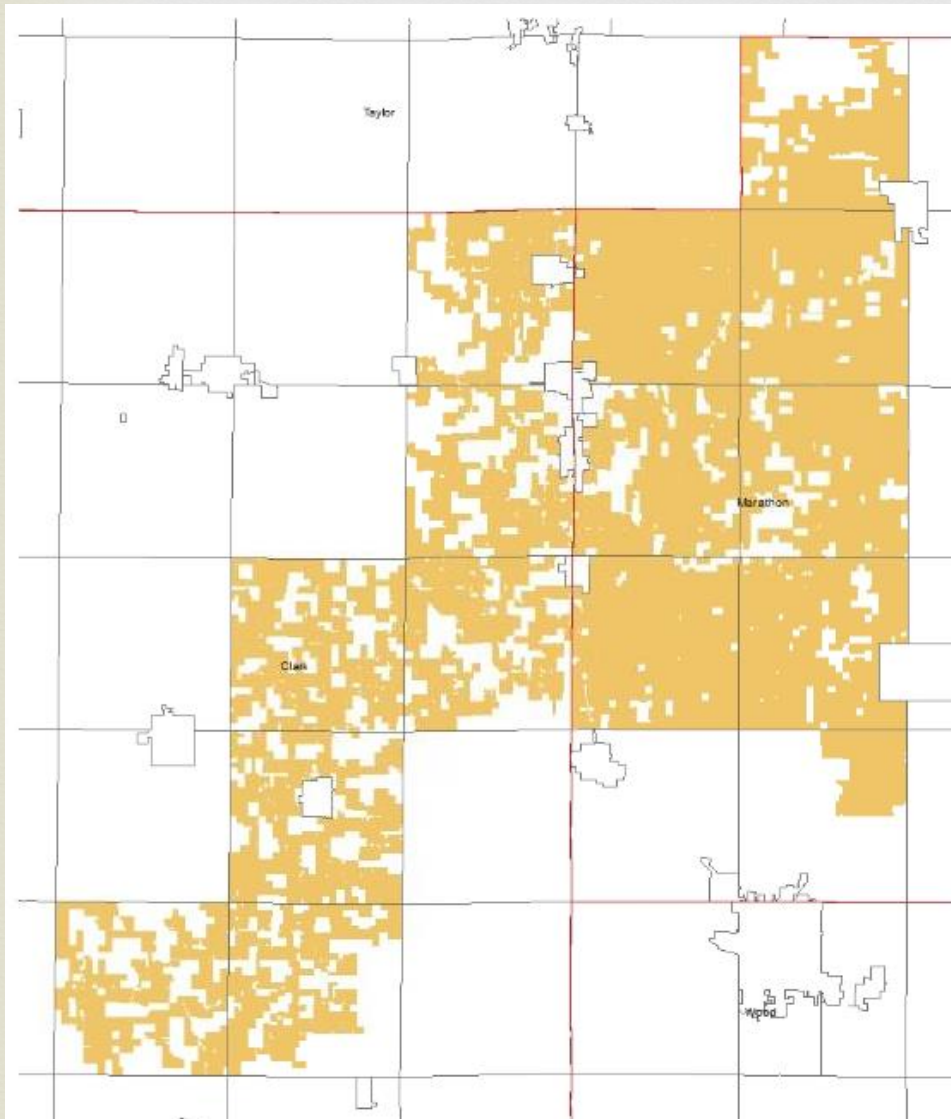


Photo courtesy of WPVGA





# Heart of America's Dairyland AEA

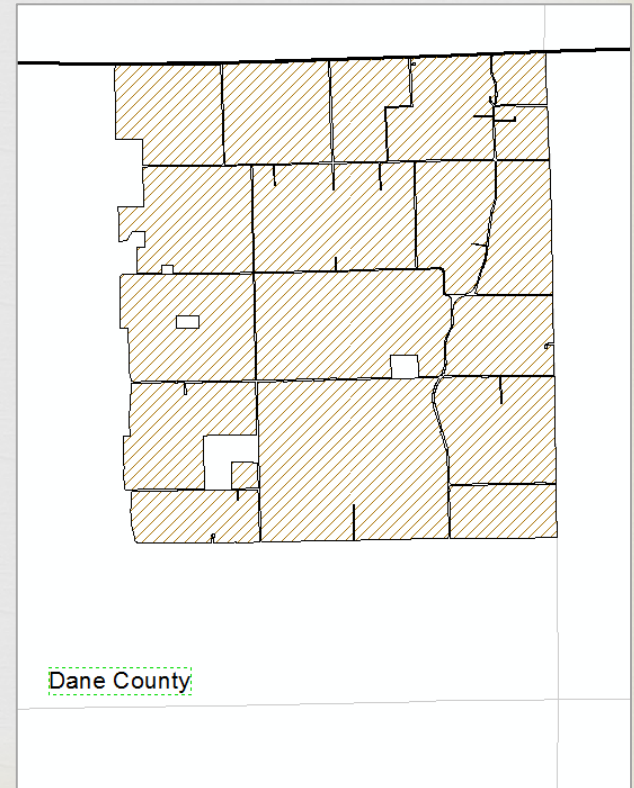


- 2 counties, 15 towns, 395 petitioners
- Totals 235,000 acres
- Focus: dairy
- Area is number one in state for dairy production
- Goal of assisting farmers in protecting environmental resources and preserving and promoting agricultural economy



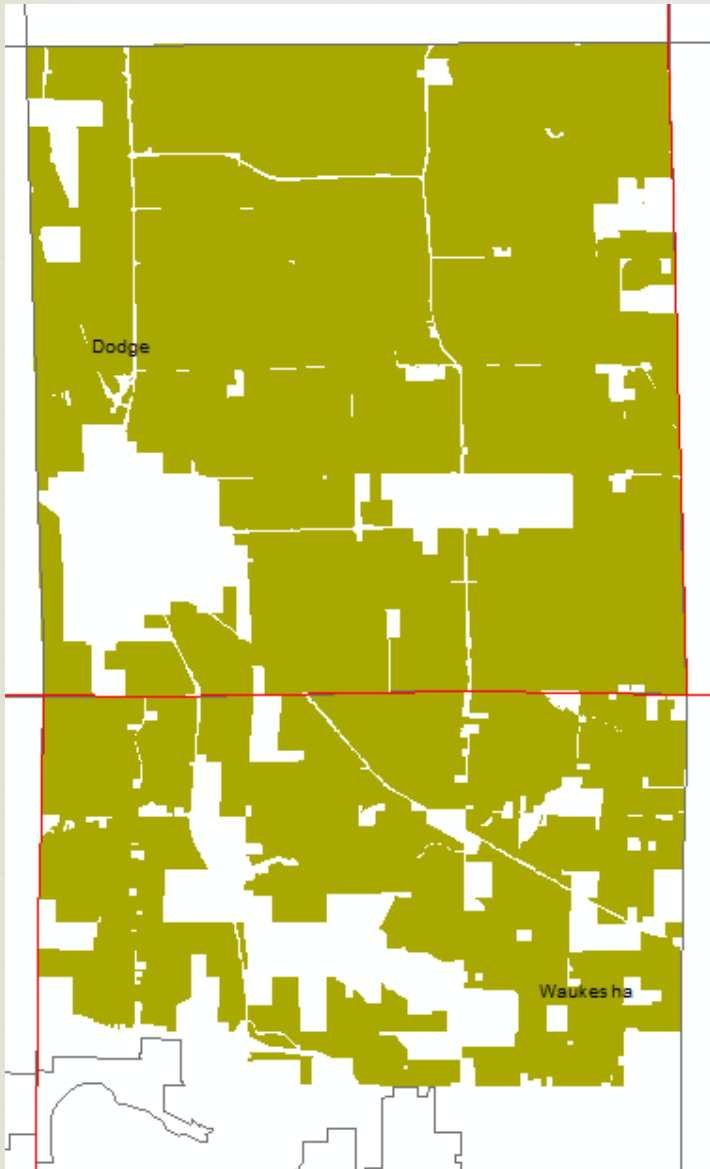
# Windsor AEA

- 1 county, 1 town, 15 petitioners
- Totals 11,000 acres
- Focus: dairy and row crops
- Goal of safeguarding productive land from non-farm development
- Cooperative boundary agreements





# Ashippun-Oconomowoc AEA

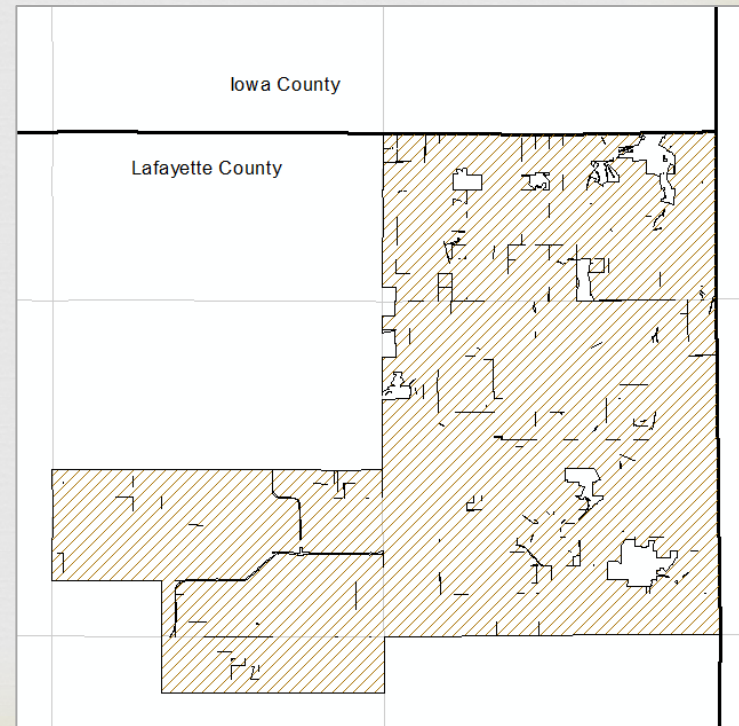
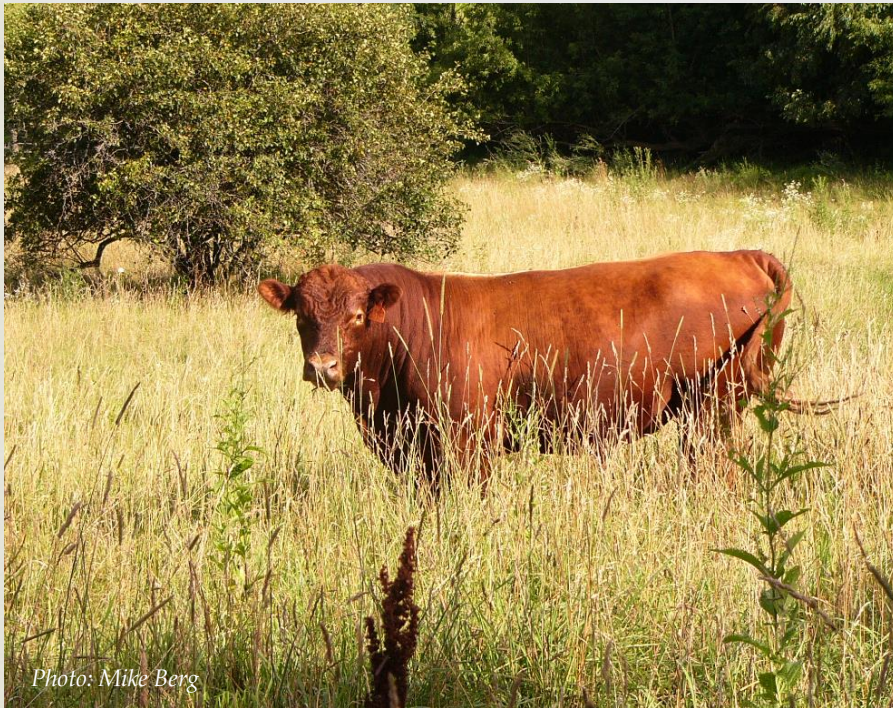


- 2 counties, 2 towns, 25 petitioners
- Totals just under 30,000 acres
- Focus: dairy, cash cropping, beef, lamb, hog, and poultry operations
- Goal of encouraging reinvestment in diverse local farm community and agricultural industry
- Large percentage of farmers under 40



# Pecatonica AEA

- 1 county, 3 towns, 93 petitioners
- Totals 45,000 acres
- Focus on row crops and livestock
- Goal of encouraging multi-generational farming
- Agriculture accounts for 85% of total business sales in the county





For More Information:  
<http://workinglands.wi.gov>

**Alison Volk**

**Wisconsin Department of Agriculture, Trade and Consumer Protection**

**Telephone: (608) 224-4634**

**E-Mail: [alison.volk@wi.gov](mailto:alison.volk@wi.gov)**

