



# **FARMS UNDER THREAT:** **THE STATE OF THE STATES**

## **Exploring our Findings**

Julia Freedgood  
Mitch Hunter  
Jennifer Dempsey

May 20, 2020

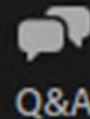


## Agenda

- Drivers of Conversion
- Visualizing the Threats
- Assessing the Policy Response
- Call to Action
- Questions & Answers

## How to Participate

Ask questions!



Up-vote questions!



Take the polls!







## **What is Farms Under Threat?**

AFT's multi-year initiative to document the status of and threats to America's agricultural land while offering policy solutions to save that land.



# Our Approach

Identify  
Threats to  
Agricultural  
Land

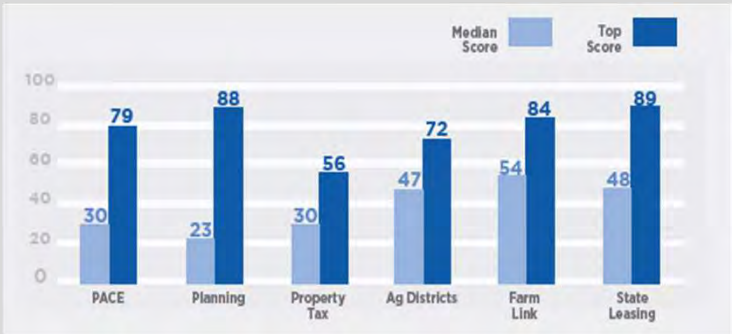


Inform  
Policymaking



AND

Analyze  
State  
Policy  
Responses



Protect More  
Farmland and  
Ranchland



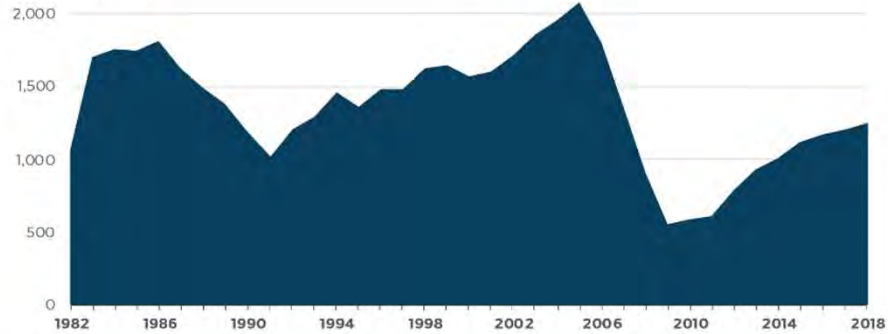




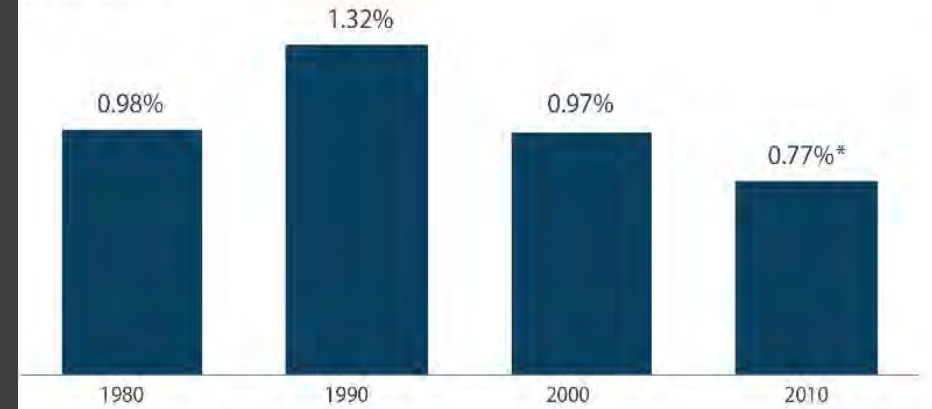
## Drivers of Agricultural Land Conversion

Annual Housing Starts  
1982-2018

Thousands of Units



Average Annual Population Growth by Decade  
1980-2016



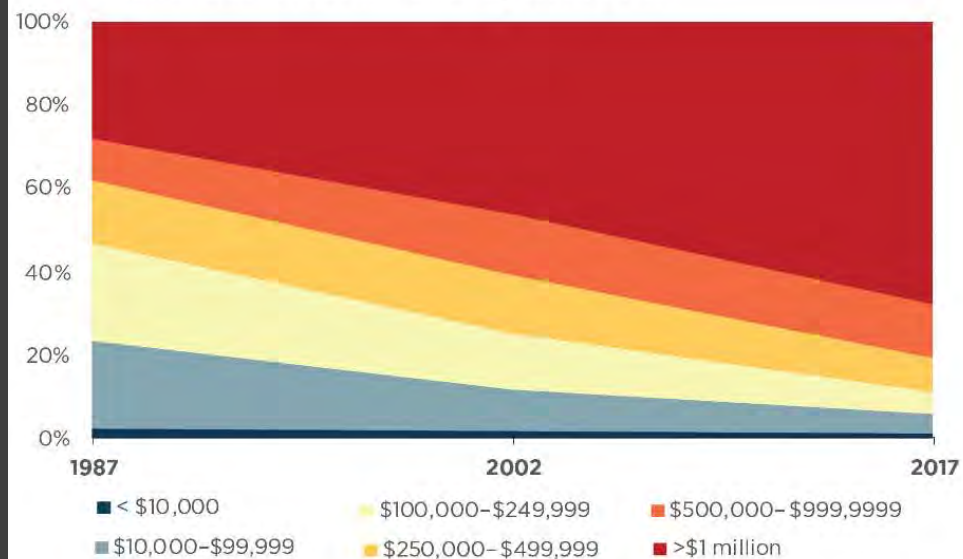
## Poorly Planned Development



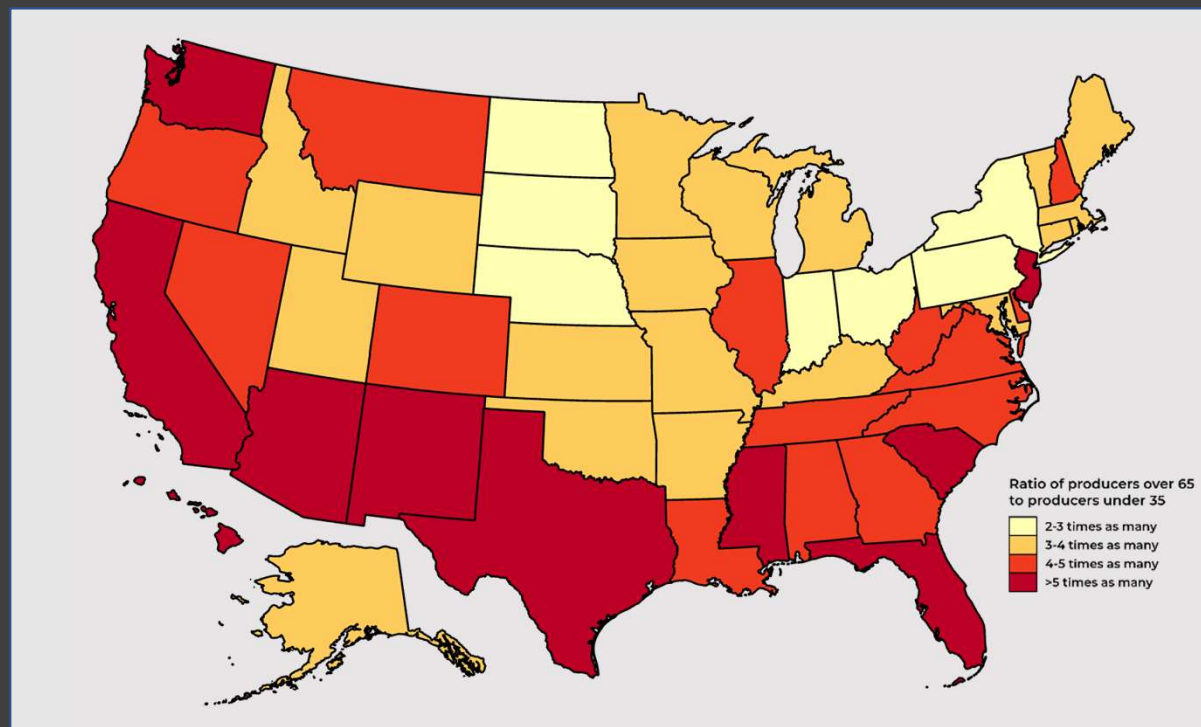
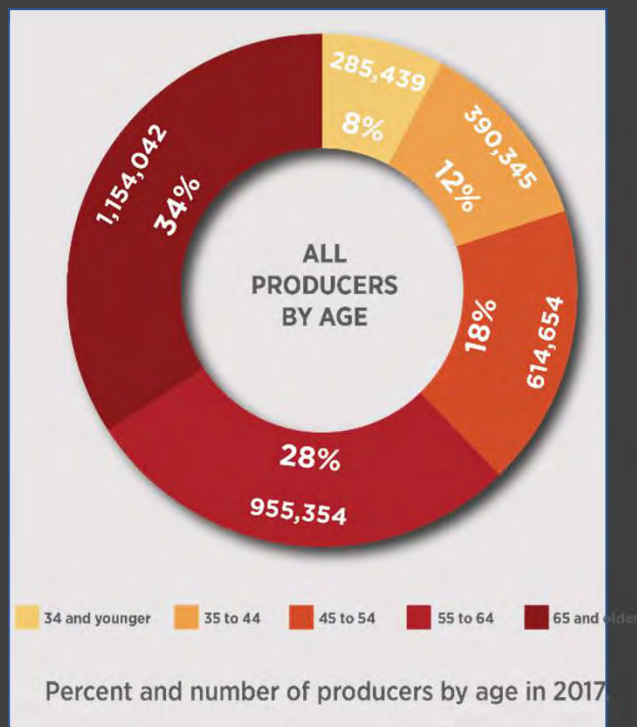


### The Shrinking Middle

Share of U.S. Production Value by Sales Class



# Weakening Ag Viability



Impending  
Transfer of Land

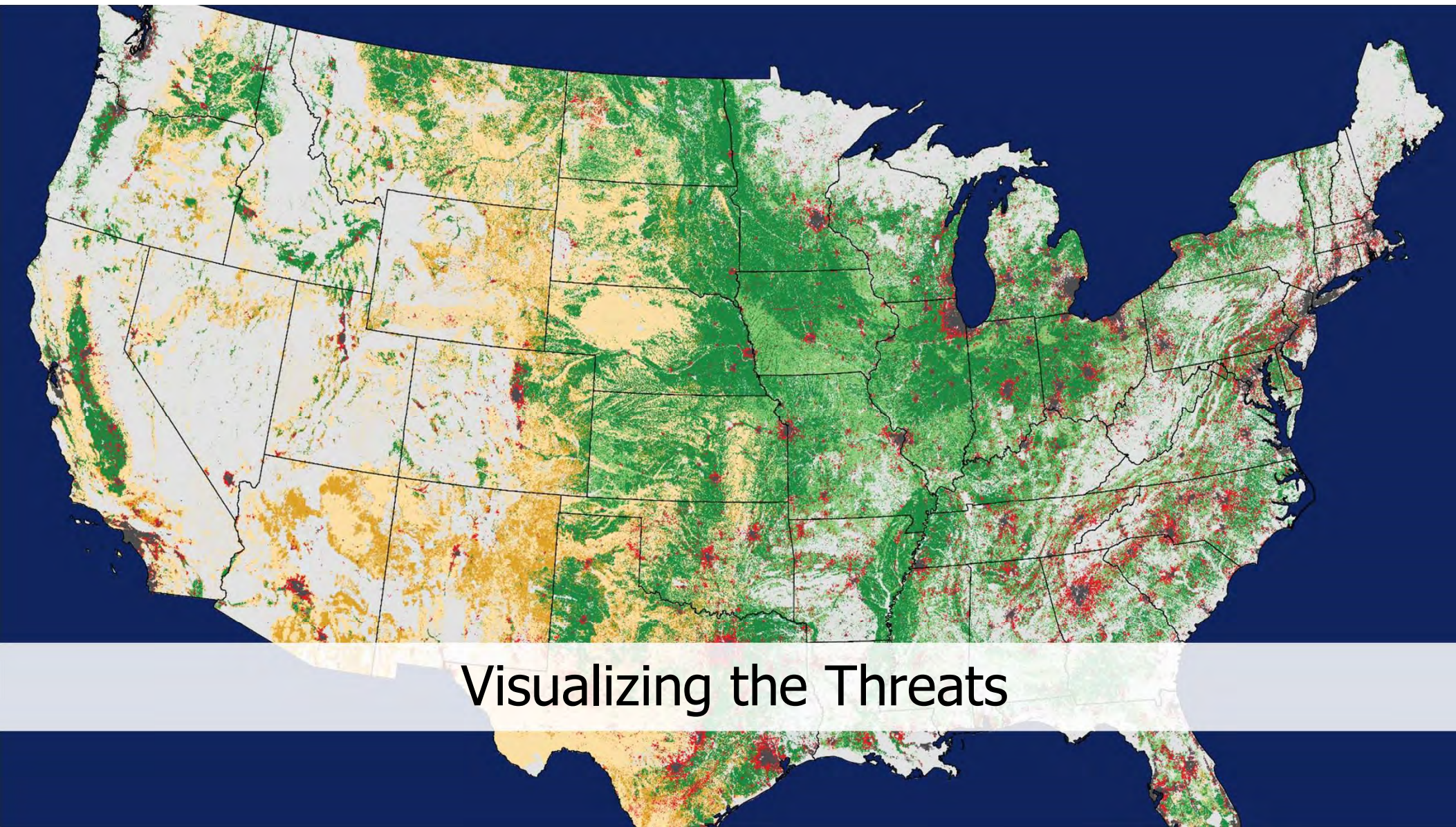
> 40% of U.S. ag land is owned by  
seniors aged 65 and older





# Climate Change





Visualizing the Threats



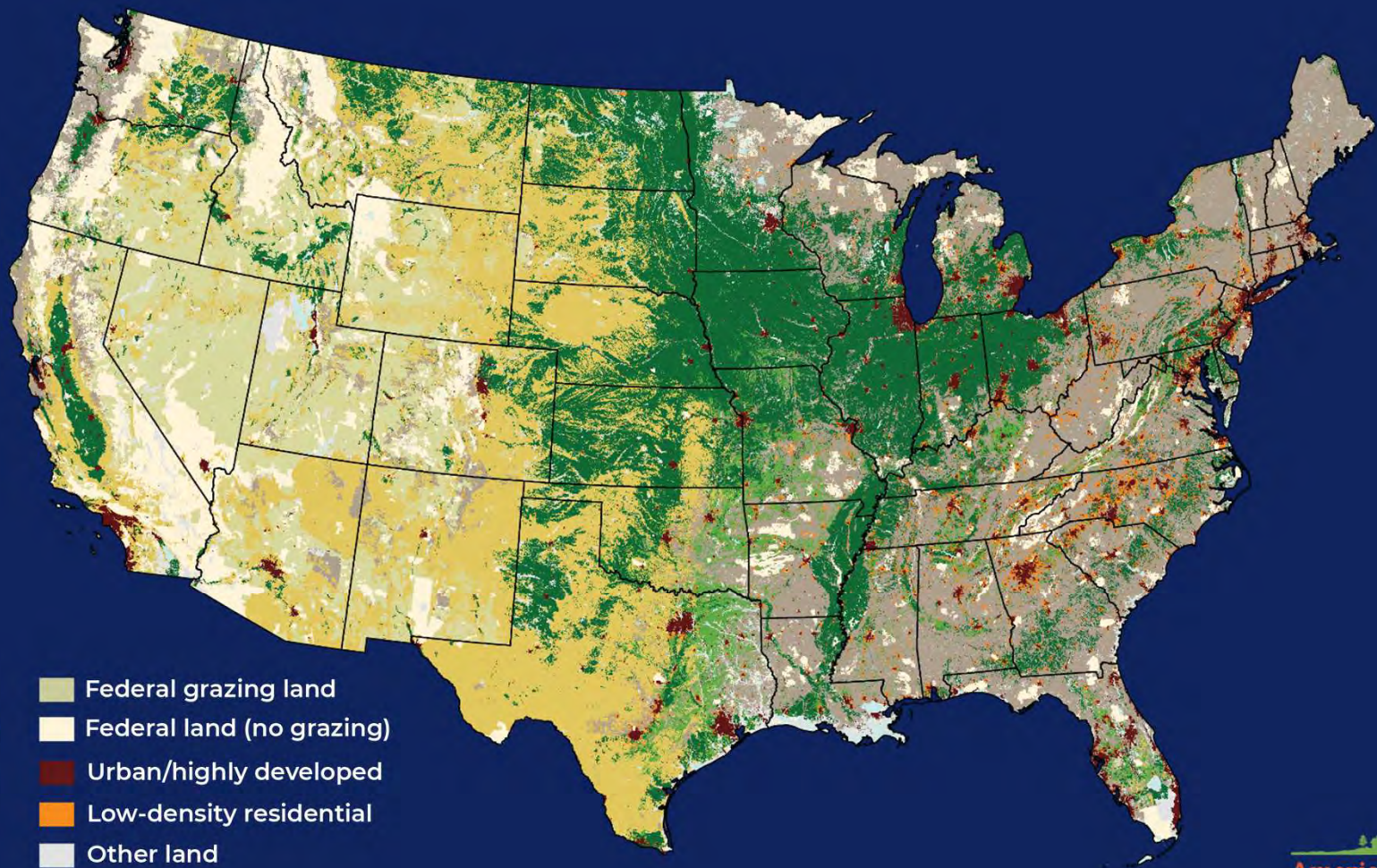


# **Spatial Modeling Approach**

1. Map land use, with a special focus on agricultural lands



# The Agricultural Landscape of the United States (2016)





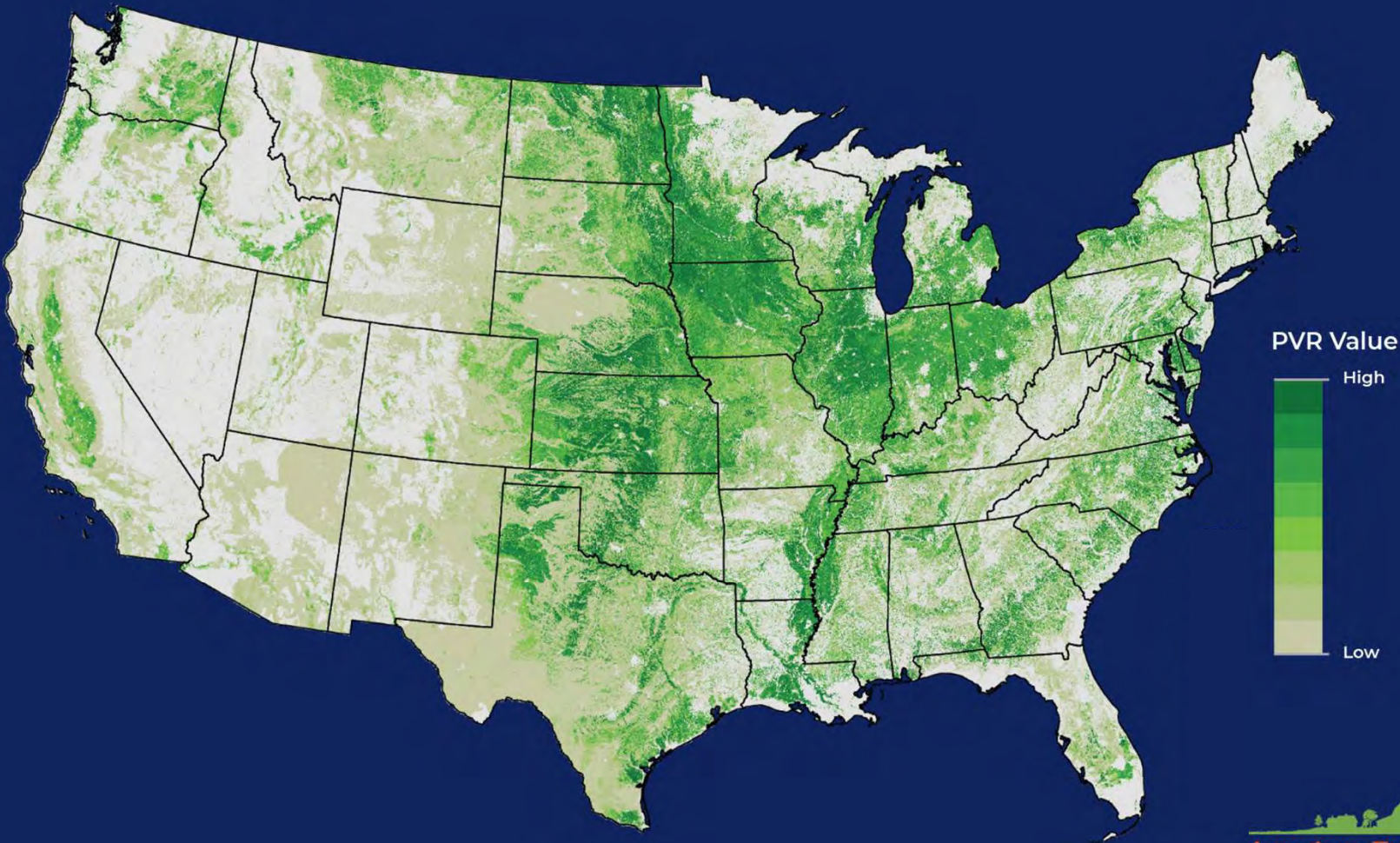


# **Spatial Modeling Approach**

1. Map land use, with a special focus on agricultural lands
2. Identify the best agricultural lands

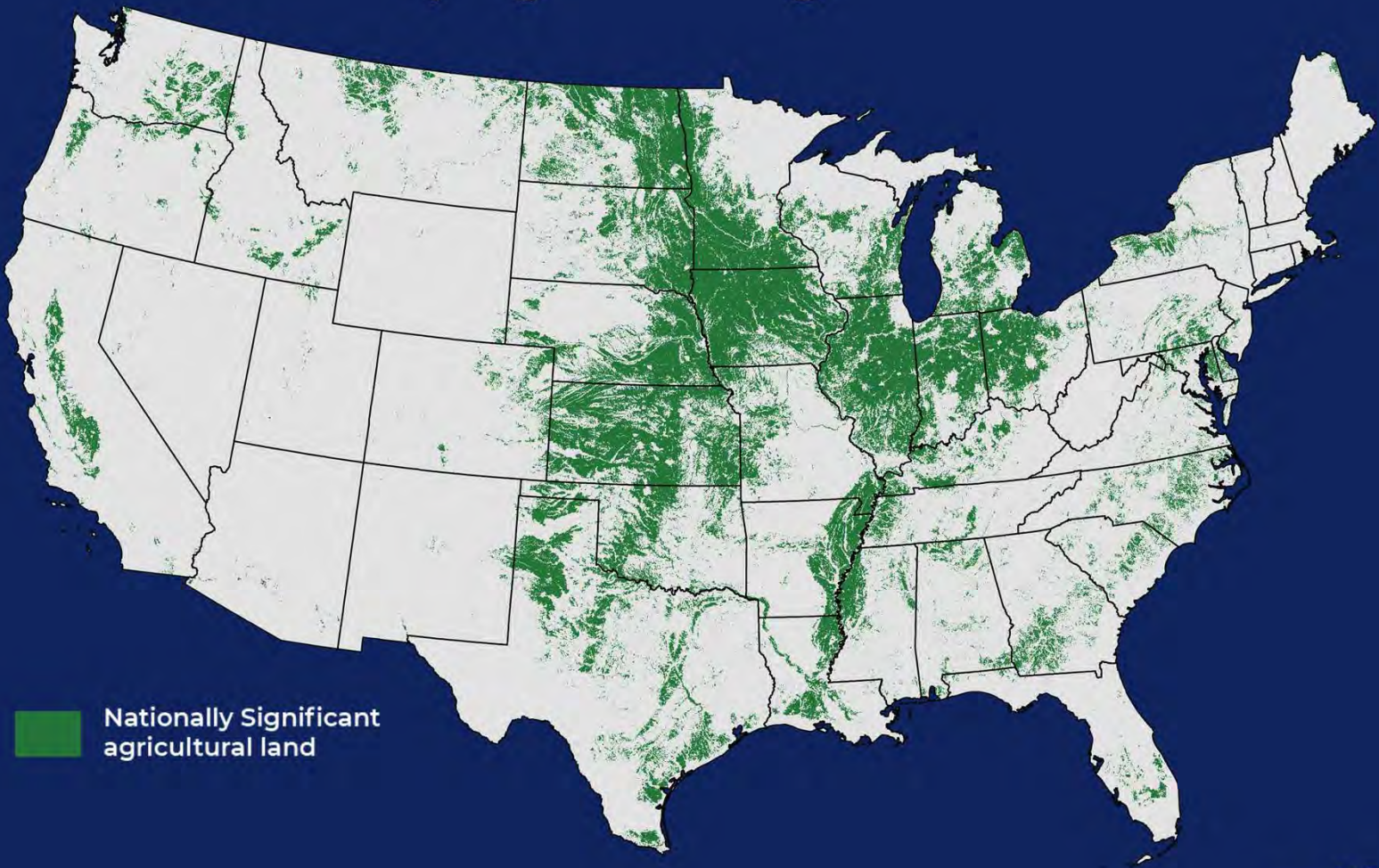


# Productivity, Versatility, and Resiliency





# Nationally Significant Agricultural Land



Nationally Significant  
agricultural land





# **Spatial Modeling Approach**

1. Map land use, with a special focus on agricultural lands
2. Identify the best agricultural lands
3. Map conversion of agricultural lands, '01-16





## Urban and Highly Developed (UHD)

- “Built-up” or developed areas of residential, commercial, and industrial use
- Includes oil and gas well pads and solar panel installations



## Low-Density Residential (LDR)

- New analysis developed for *Farms Under Threat*
- Ranges from less-dense subdivisions to rural areas where residential use is intensifying
- Fragmentation
- Limits options for working farms and ranches



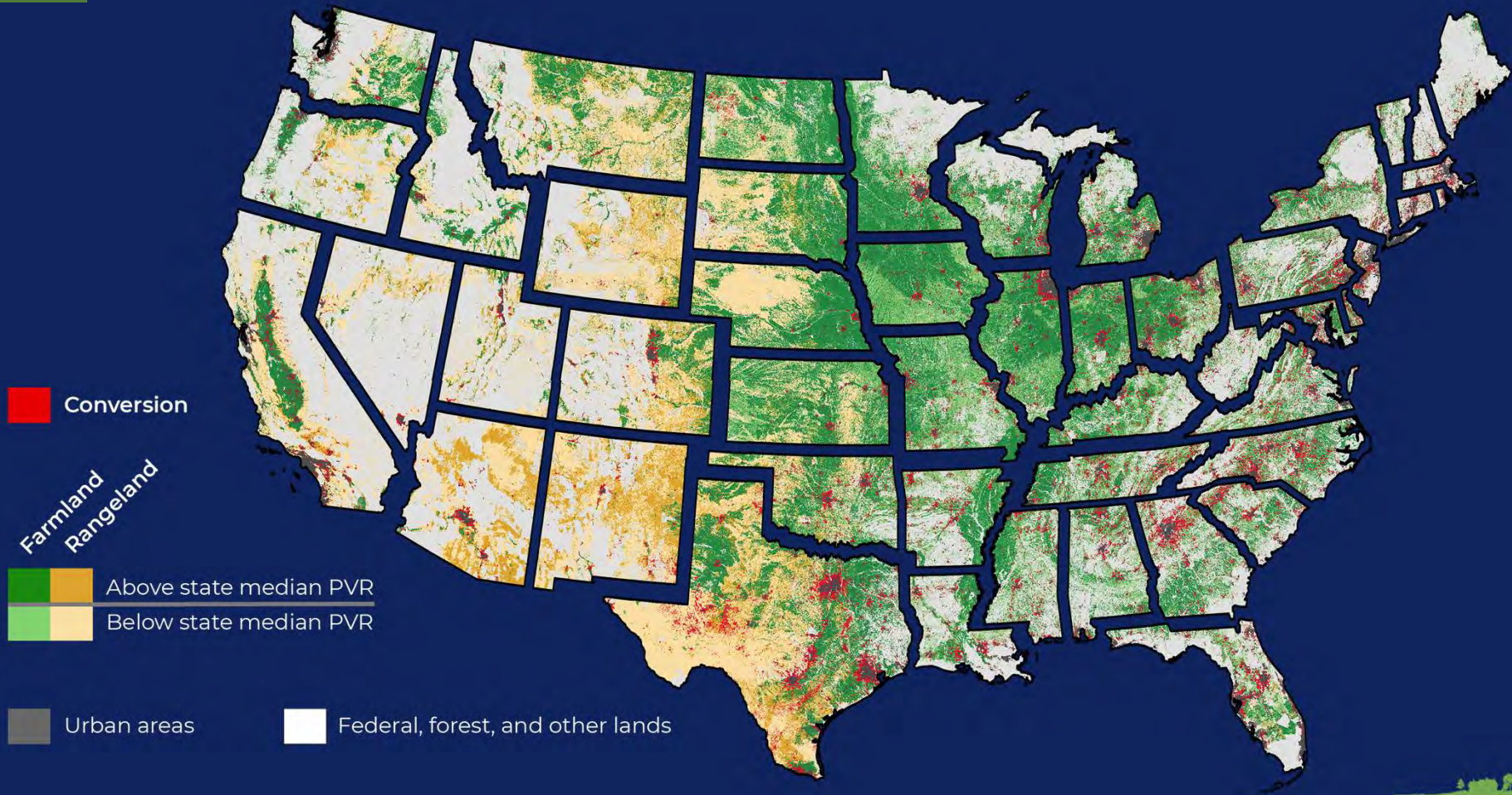


## Development Threatens Each State's Best Agricultural Land

- From 2001–2016, the U.S. converted 11 million acres of agricultural land
  - Equal to all the land planted to fruits, nuts and vegetables in 2017
  - 2000 acres/day
- Low-density residential land use is a major threat
  - 4 million acres were converted to urban and highly developed land use
  - Nearly 7 million acres were converted to low-density residential land use
- 4.4 million acres of the total conversion occurred on Nationally Significant agricultural land



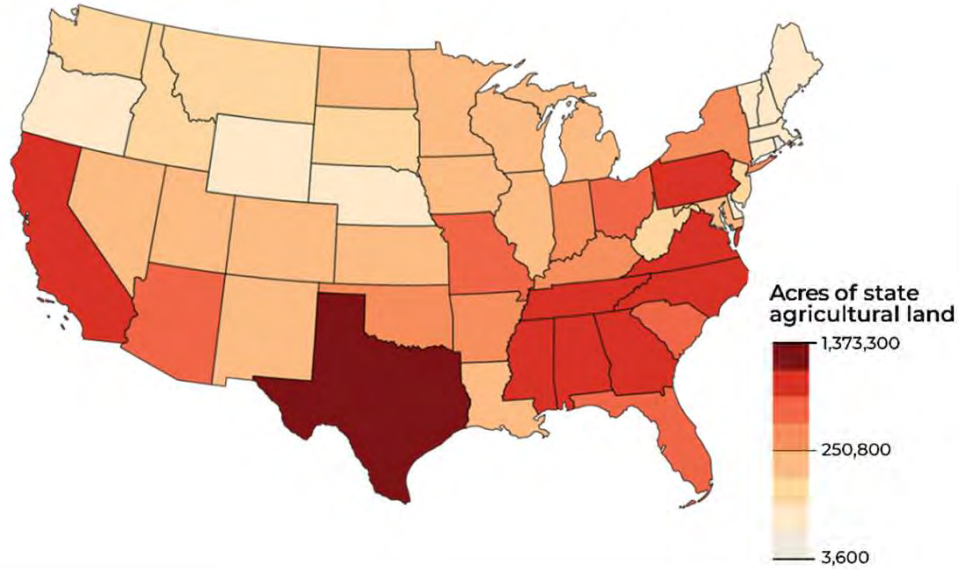
# Development Threatens Each State's Best Agricultural Land



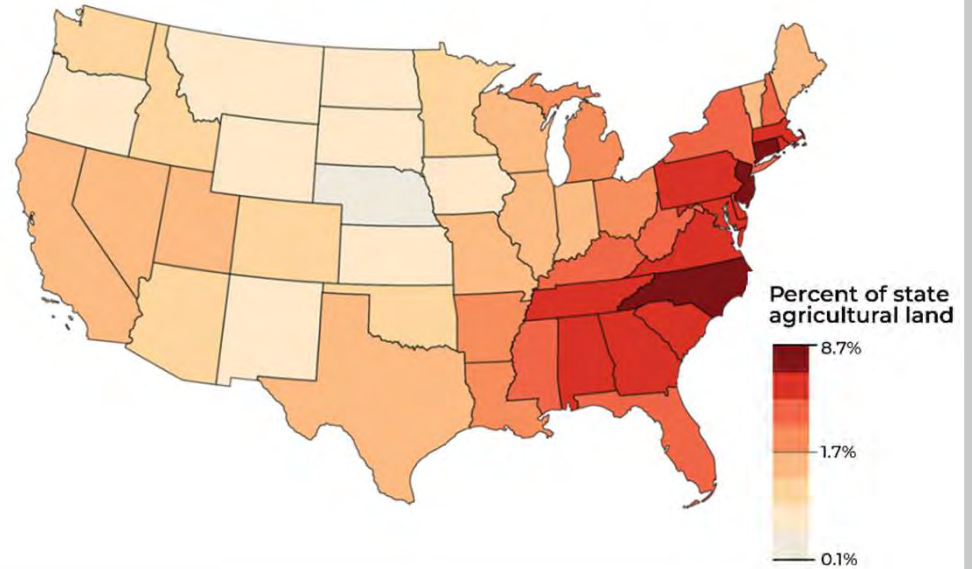
- Conversion
- Farmland  
Rangeland
- Above state median PVR
- Below state median PVR
- Urban areas
- Federal, forest, and other lands



### Acres Converted

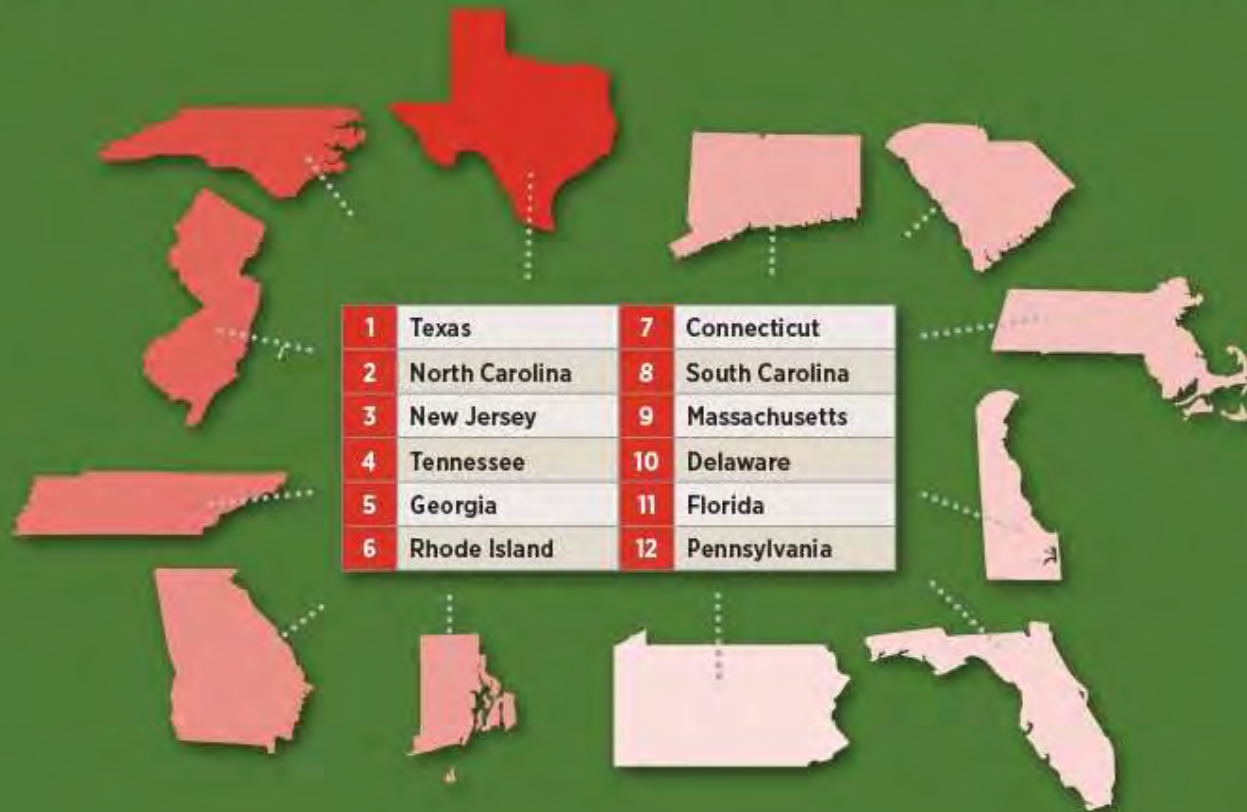


### Percent Converted



Total Conversion (2001-2016)

# TOP 12 MOST THREATENED STATES







# Assessing the Policy Response





## Agricultural Land Protection Scorecard

- Assesses efforts to protect and retain agricultural land
- Focuses on 6 approaches
- Rates program performance and states' overall response







## Programs & Policies

- Purchase of Agricultural Conservation Easements (PACE)
- Land Use Planning
- Agricultural Districts
- Real Property Tax Relief
- Farm Link
- State Leasing





# Scorecard Approach

---

1. Selected Policies and Programs
2. Developed Factors
3. Examined Policies
4. Calculated Scores
5. Analyzed Responses





# Calculating Policy Response Scores

POLICY	RANK	WEIGHT
Purchase of Agricultural Conservation Easements	1	32.5%
Planning and Land Use Policies	1	32.5%
Real Property Tax Relief	3	15.8%
Agricultural Districts	4	10.3%
Farm Link	5	6.1%
State Leasing	6	2.8%





# The Agricultural Land Protection Scorecard

POLICIES & PROGRAMS		weight and points	NJ	DE	MD	PA	VT	CA	CT	RI	OR	WA	MA	HI	NY	VA	CO	NH	WI	UT	NC	ME	FL	OH	MI	MN	KY	SC	IA	TX	WV	TN	NV	NM	GA	ID	MT	SD	AL	AZ	NE	IL	AK	WY	MO	IN	KS	OK	LA	ND	MS	AR		
	PACE	32.50%	79	79	66	65	76	33	46	46	12	25	50	29	32	30	49	40	26	28	27	37	31	38	30	0	31	23	0	25	30	0	0	17	12	0	9	0	6	0	0	0	0	0	9	0	0	0	0	0	0	0		
	Land Use Planning	32.50%	47	53	62	47	50	51	50	58	88	79	34	52	20	27	34	32	32	29	18	28	47	13	21	28	19	23	23	15	15	27	26	19	19	33	18	24	16	22	21	13	15	20	11	22	17	13	12	8	9	10		
	Property Tax Relief	15.80%	40	42	48	50	55	56	35	37	51	42	42	47	37	37	21	38	28	30	30	35	8	37	52	36	8	22	17	29	16	33	46	8	34	19	21	19	20	17	19	13	31	17	18	17	14	13	18	16	8	8		
	Agricultural Districts	10.30%	63	72	0	57	0	68	0	0	0	0	18	0	63	55	0	0	49	45	38	0	0	45	0	57	36	0	31	0	0	20	0	0	0	0	0	0	0	0	41	0	0	0	0	0	0	0	0	0	0	0	0	
	Farm Link	6.10%	54	0	53	0	0	0	79	17	0	0	0	0	84	54	0	0	0	0	75	0	0	0	0	52	0	24	77	0	0	0	0	50	0	0	0	0	0	0	0	0	0	0	0	0	0	0	0	0	0	0	0	0
	State Leasing	2.80%	63	52	40	59	59	30	77	68	63	57	84	89	7	7	69	48	7	9	7	33	43	7	19	51	45	0	57	51	7	54	62	50	7	40	64	47	49	57	54	29	39	60	46	7	0	50	7	40	48	0		
	Total Raw Score	MAX 600	345	298	269	279	240	238	287	227	214	203	228	217	242	209	174	159	142	141	194	134	128	139	122	224	139	92	205	120	68	133	133	142	72	91	111	90	91	96	94	96	86	97	83	45	31	76	37	64	65	18		
	Weighted Policy Response Score	Max 100	59	58	53	52	51	44	44	43	42	42	38	36	34	33	32	31	28	28	28	28	28	27	25	25	22	20	20	19	17	17	17	17	16	15	14	12	12	12	11	11	11	11	11	10	10	8	8	7	6	6	5	
	QUARTILE		1												2												3												4															







## Leading States Responded to Visible Changes

- 7 were among the top 10 most densely populated states in 1950
- Remaining 3 experienced double-digit population growth
- Half experienced double-digit percentage losses of agricultural land

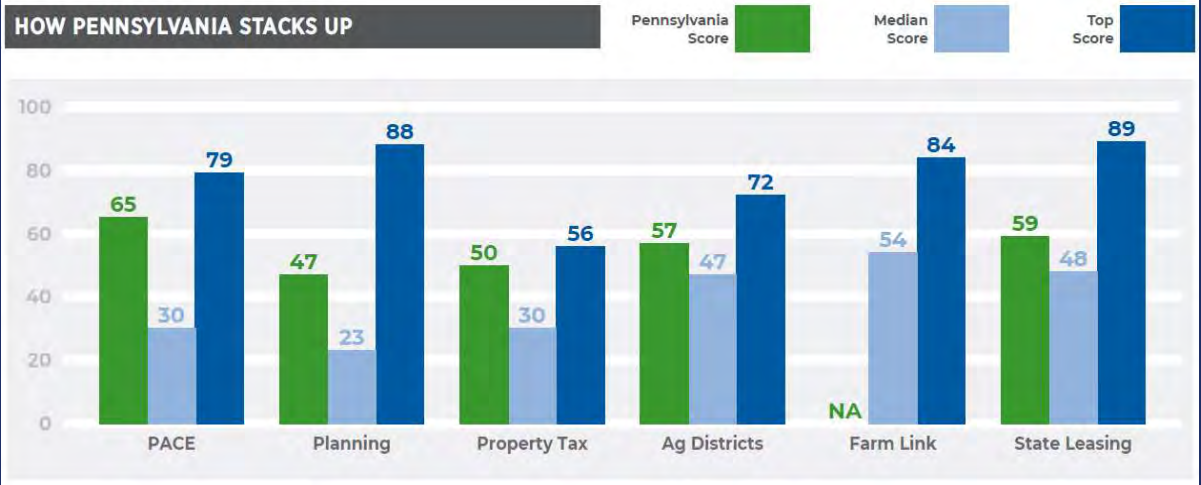
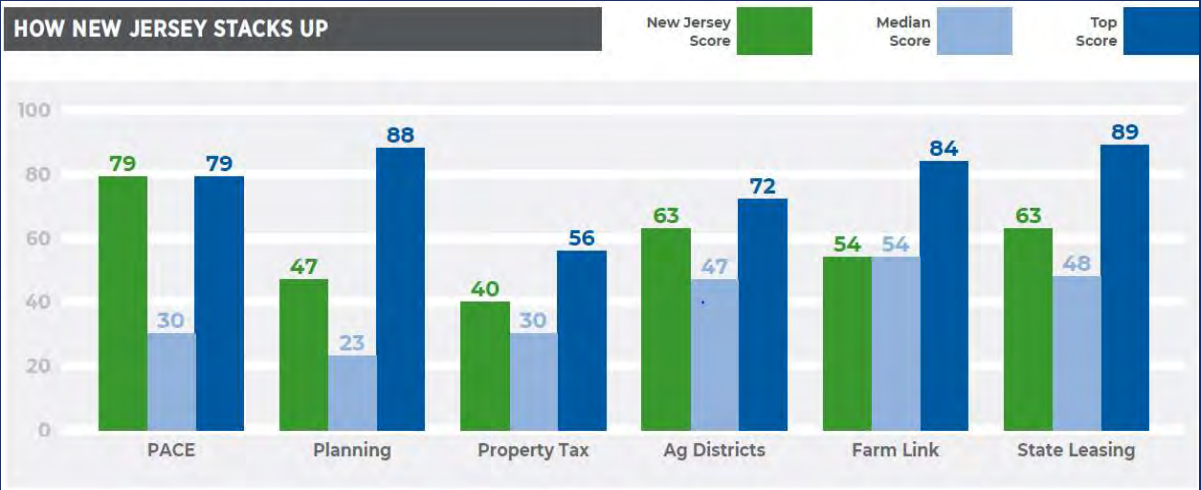






# Coordination is Key

## Leaders Linked Multiple Approaches

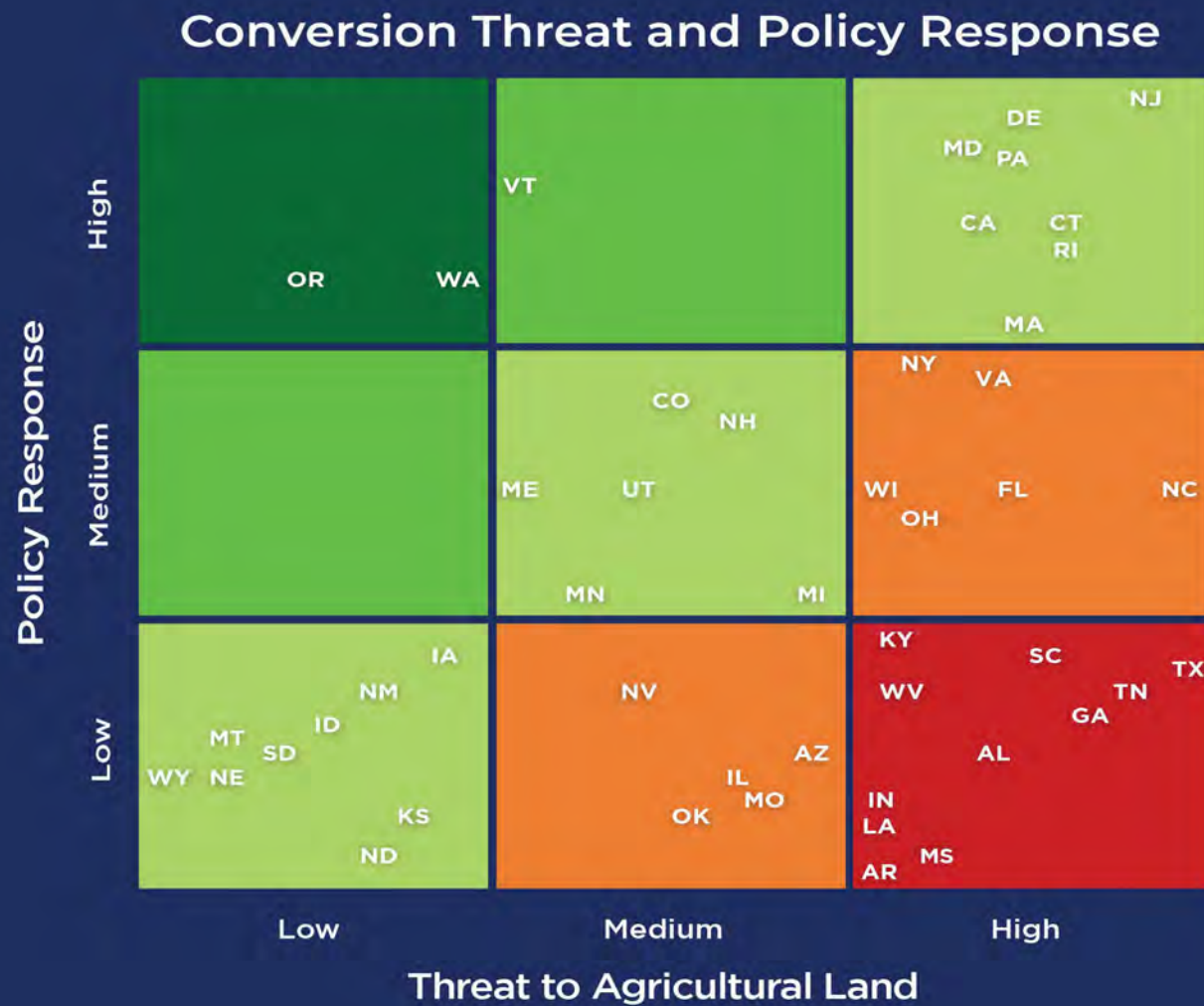






# Call to Action





Comparing  
Threat to  
Response





Analyze and Map Ag Land Trends and Conditions





Strengthen or Adopt a Suite of Coordinated Policies





Support Farm Viability and Access to Land







Plan for Agriculture, Not Just Around it





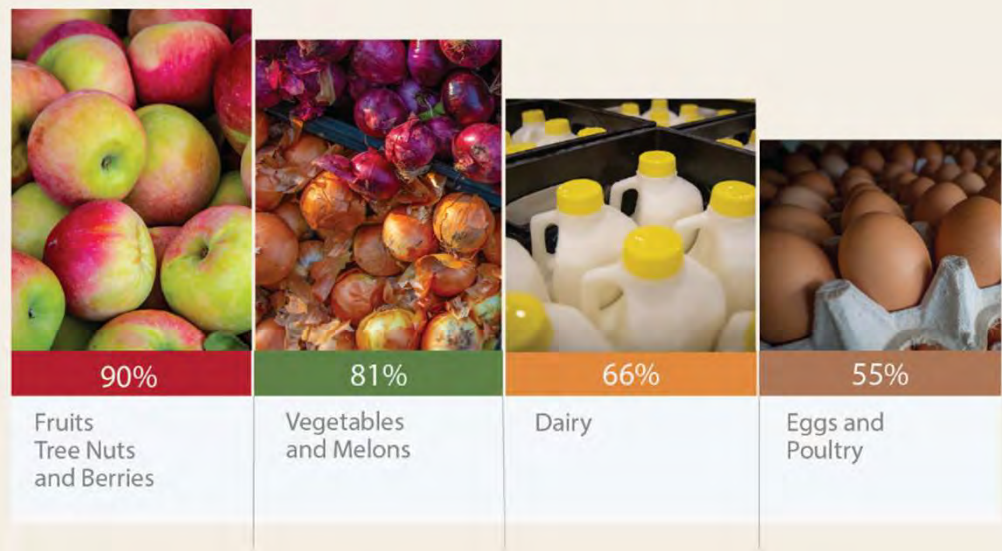


Save the Best, but Don't Forget the Rest





## Food in the Path of Development



Percentage of U.S. production by market value of select food types that are produced in metro or metro-influenced counties, 2017.

Source: USDA National Agricultural Statistics Service, 2017 Census of Agriculture.



VISIT AMERICAN FARMLAND TRUST

VISIT FARMLAND INFORMATION CENTER



## The State of the States National Summary

Select a state... Reports and Data

Welcome Spatial Mapping Policy Scorecard Call to Action

### National Findings

#### Conversion of Agricultural Land (2001-2016)

About this layer

**4,139,600 acres**

of the Conterminous U.S. agricultural land were converted to urban and highly developed (UHD) land use

**6,792,800 acres**

of the Conterminous U.S. agricultural land were converted to low-density residential (LDR) land use



VISIT AMERICAN FARMLAND TRUST

VISIT FARMLAND INFORMATION CENTER



## The State of the States National Summary

Select a state... Reports and Data

Welcome Spatial Mapping Policy Scorecard Call to Action

### Agricultural Land Protection Scorecard

Navigation Help

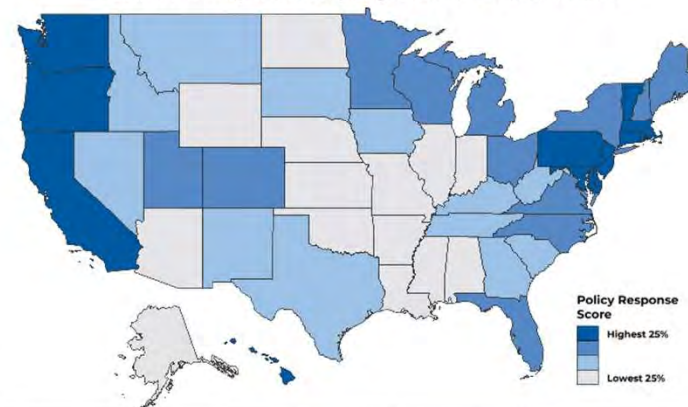
The Agricultural Land Protection (ALP) Scorecard is a state-by-state analysis of policies and programs that address the loss of farmland to development. Intended to inform decision-making and legislative action, it assesses state actions, measures their performance, and highlights effective aspects of the following programs and policies:

1. Purchase of agricultural conservation easement programs (PACE)
2. Land use planning and growth management
3. Property tax relief for agricultural land
4. Agricultural district programs
5. Farm Link programs
6. State leasing programs

We used quantitative and qualitative factors to compare approaches across 50 states. The results for each policy are summarized in the *policy scoresheets*. We rolled up the totals from each scoresheet to generate Policy Response Scores, which are presented in the *ALP Scorecard* and serve

### Policy Response Scores by Quartile

Click on the map to see the policy scores for the selected state.



[www.farmland.org/farmsunderthreat](http://www.farmland.org/farmsunderthreat)



# Questions?



Explore the maps and scorecard at:  
[www.farmland.org/farmsunderthreat](http://www.farmland.org/farmsunderthreat)

For more information about the project or AFT:  
[www.farmland.org](http://www.farmland.org)