



# FARMS UNDER THREAT: THE STATE OF THE STATES

**John Piotti**  
President and CEO  
American Farmland Trust  
May 20, 2020

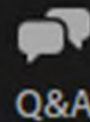


## Agenda

- Summary
- Brief Q&A
- Roundtable
- General Q&A

## How to Participate

Ask questions!



Up-vote questions!



Take the poll!





# Roundtable Discussion



**Matthew Lohr**  
Chief, USDA Natural Resources  
Conservation Service



**Karen Ross**  
Secretary, California Department  
of Food and Agriculture







SUBSCRIBE

healthline

Search Healthline

# Rural America Could Be the Region Hardest Hit by the COVID-19 Outbreak

Written by Christopher Curley, on May 13, 2020 - Fact checked by Jennifer Chesak  
New



# Inside Philanthropy

## Alarms Are Sounding on Food Insecurity in the U.S. Who's Answering the Call?

Liz Longley



VPR

## Rising Food Insecurity And Hunger Relief Amid The Pandemic

By JANE LINDHOLM & MATTHEW F. SMITH • APR 26, 2020

[Share](#) [Tweet](#) [Email](#)





# FARMS UNDER THREAT: THE STATE OF THE STATES



[www.farmland.org/  
FarmsUnderThreat](http://www.farmland.org/FarmsUnderThreat)

  
American Farmland Trust

The logo for the American Farmland Trust, featuring a stylized green silhouette of a farm with trees and a building, positioned above the text "American Farmland Trust" in a red, serif font.





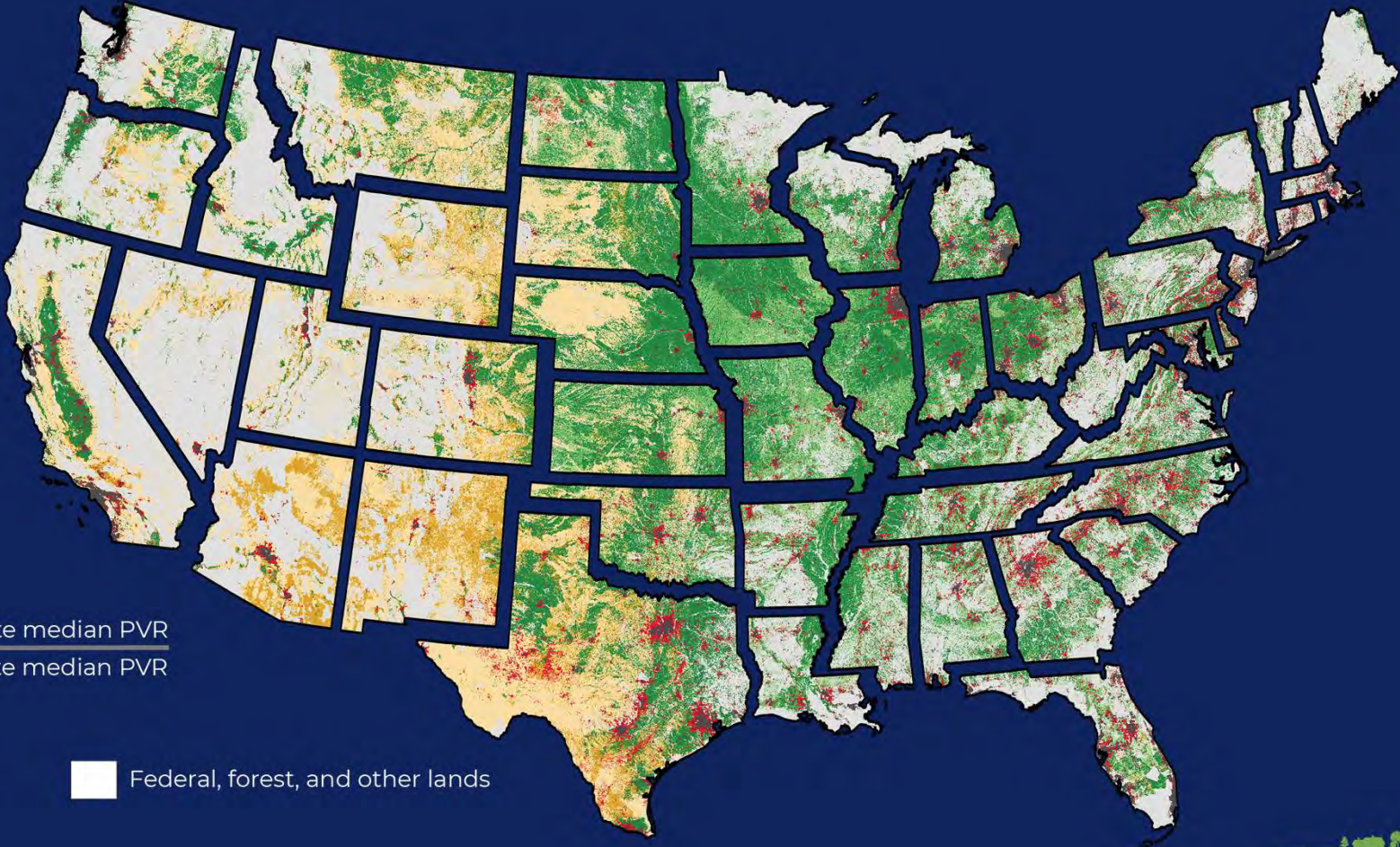




AFT's Reason to Be is to Avert Catastrophe



# 11 Million Acres Converted, 2001-2016



Conversion

Farmland  
Rangeland

Above state median PVR  
Below state median PVR

Urban areas

Federal, forest, and other lands

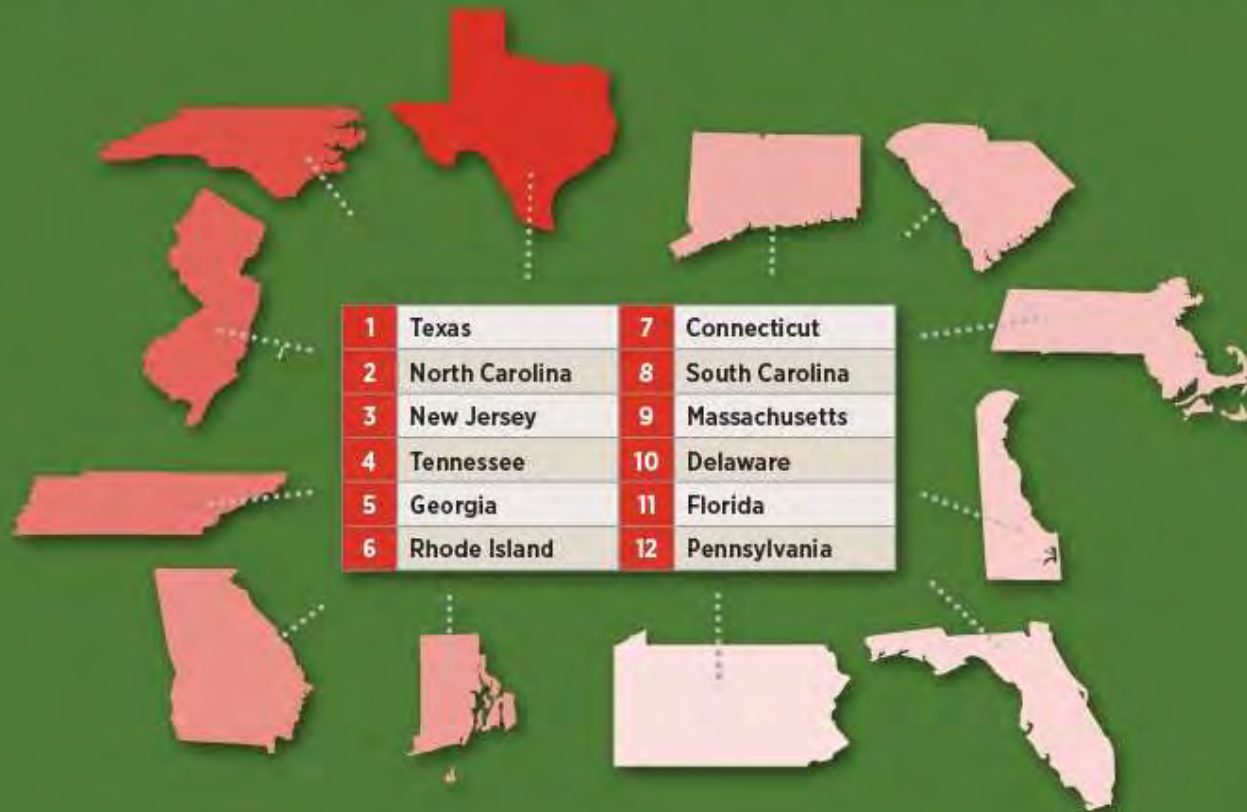


An aerial photograph showing a large residential development of houses with brown roofs and light-colored siding. In the foreground, there is a farm with a large white barn, a tall white silo, and a smaller white outbuilding. The text "2,000 acres a day" is overlaid in the center of the image.

2,000 acres a day



# TOP 12 MOST THREATENED STATES





# Urban and Highly Developed





# Low-Density Residential

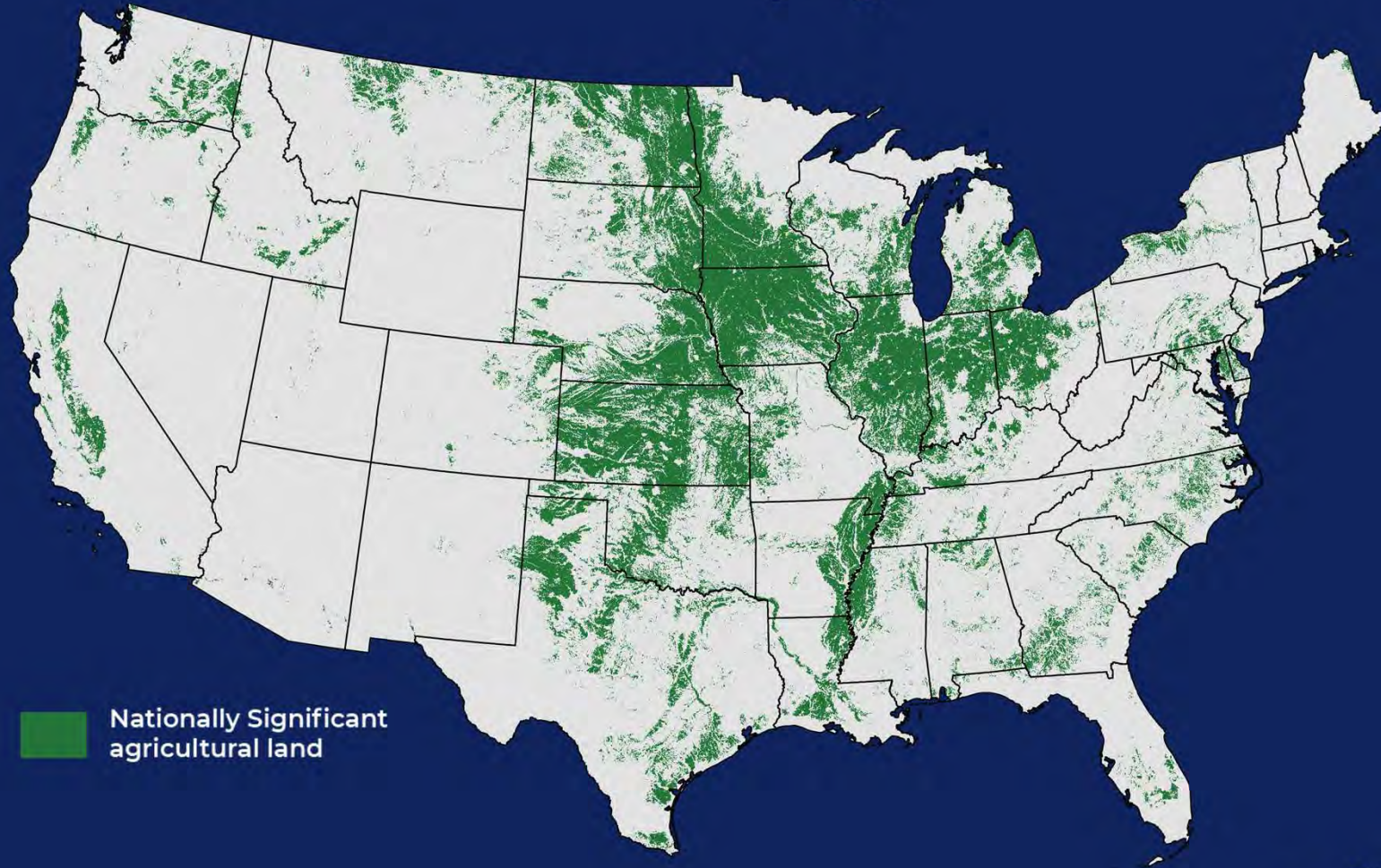


An aerial photograph showing a residential neighborhood in the foreground and agricultural fields in the background. The houses have various roof colors, and there are cars parked on the streets. The fields are large and brown, indicating they have been harvested. The text "23 times more likely" is overlaid in the center of the image.

23 times more likely



# 4.4 Million Acres of Nationally Significant Land Converted



Nationally Significant  
agricultural land





# Climate Change









## Policies & Programs

- Purchase of Agricultural Conservation Easements (PACE)
- Land-Use Planning
- Agricultural Districts
- Property Tax Relief
- Farm Link
- State Leasing



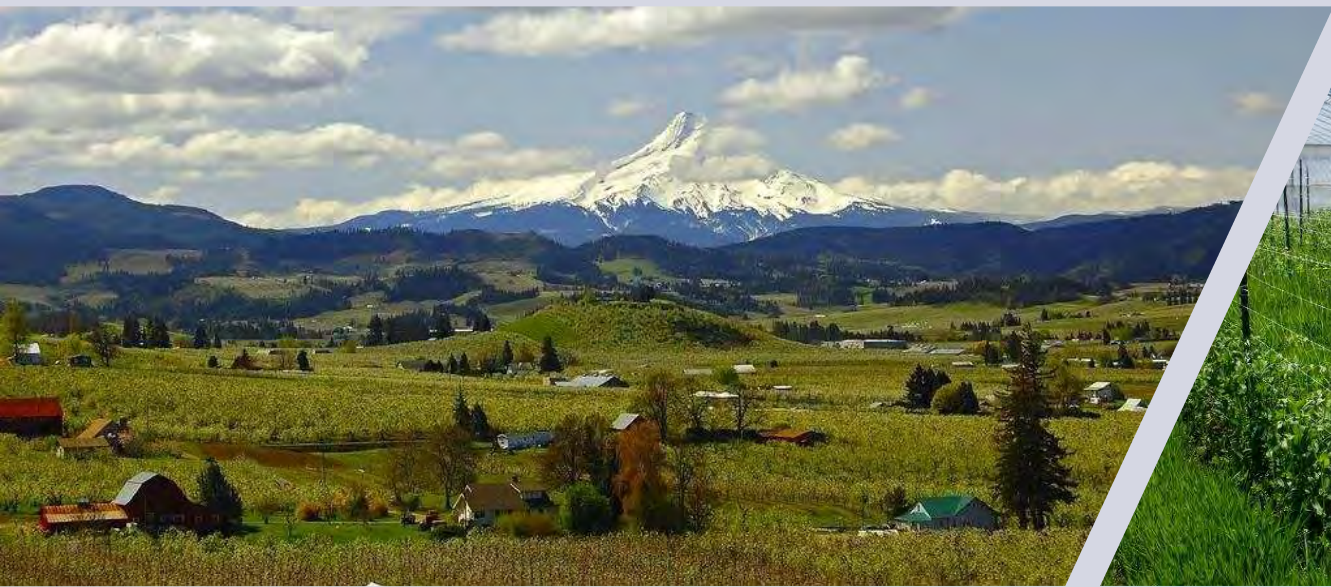




# TOP 12 HIGH RESPONSE STATES



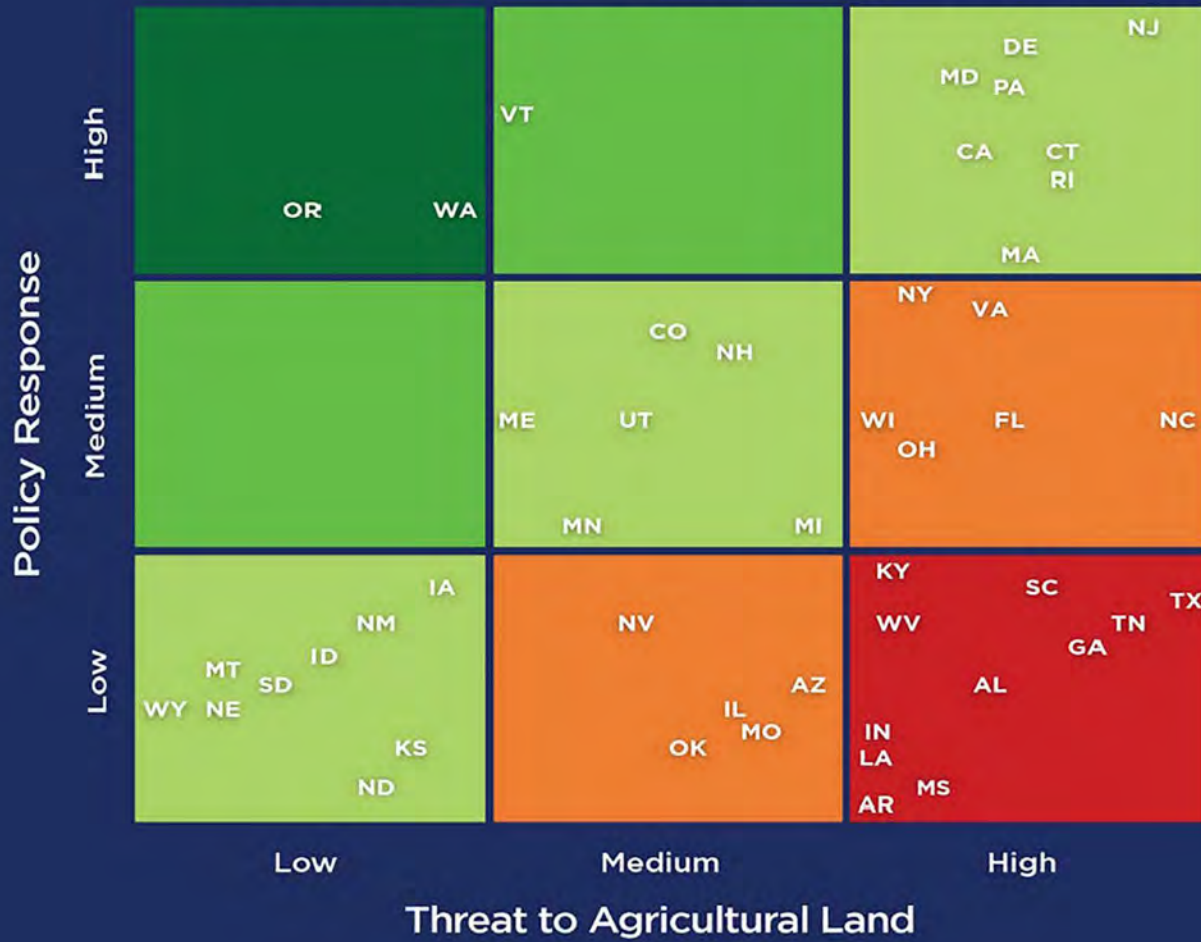








# Conversion Threat and Policy Response







## State Actions

1. Map Agricultural Land
2. Adopt a Suite of Coordinated Policies to Protect Farmland
3. Support Farm Viability and Access to Land
4. Plan for Agriculture, Not Just Around It
5. Save the Best, but Don't Forget the Rest





## Federal Actions

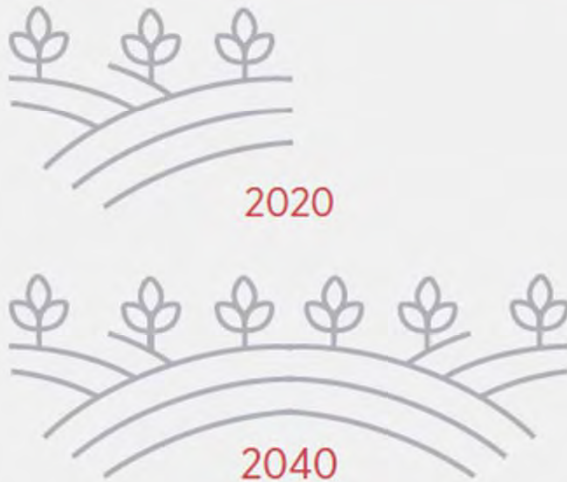
1. Double Funding for ACEP-ALE
2. Strengthen the Farmland Protection Policy Act
3. Facilitate Farm Transfer to a New Generation
4. Increase Support for Agricultural Viability
5. Provide Federal Funding to Plan for Agriculture



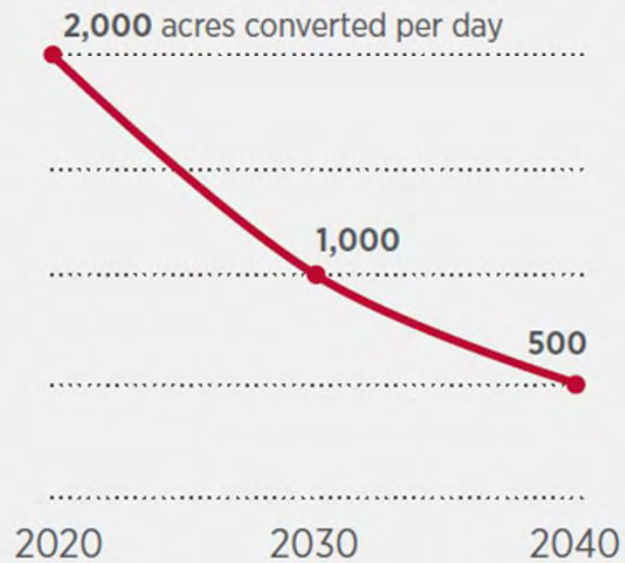


# OUR GOAL

DOUBLE THE AMOUNT OF PERMANENTLY PROTECTED FARMLAND



DRASTICALLY REDUCE THE RATE THAT FARMLAND IS CONVERTED TO OTHER USES





# AFT Will Lead the Response

1. Establishing the National Agricultural Land Network
2. Providing New Leadership in Key Locations
3. Protecting More Farmland Ourselves and with Partners
4. Advocating for Stronger State and Federal Policies
5. Promoting Research-Based Decision Making





Join us!







# Questions?



Explore the maps and scorecard at:  
[www.farmland.org/farmsunderthreat](http://www.farmland.org/farmsunderthreat)

For more information about the project or AFT:  
[www.farmland.org](http://www.farmland.org)