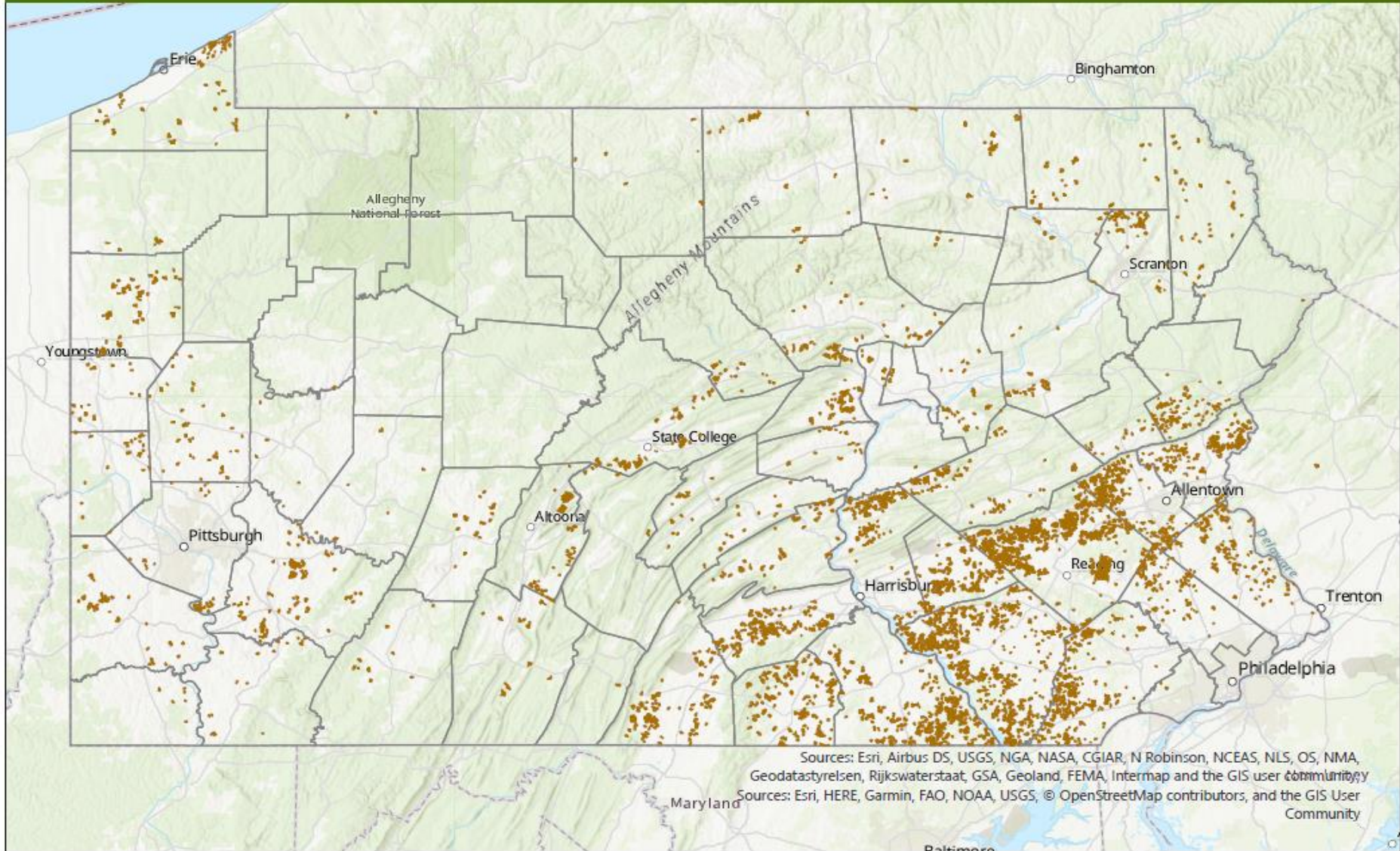


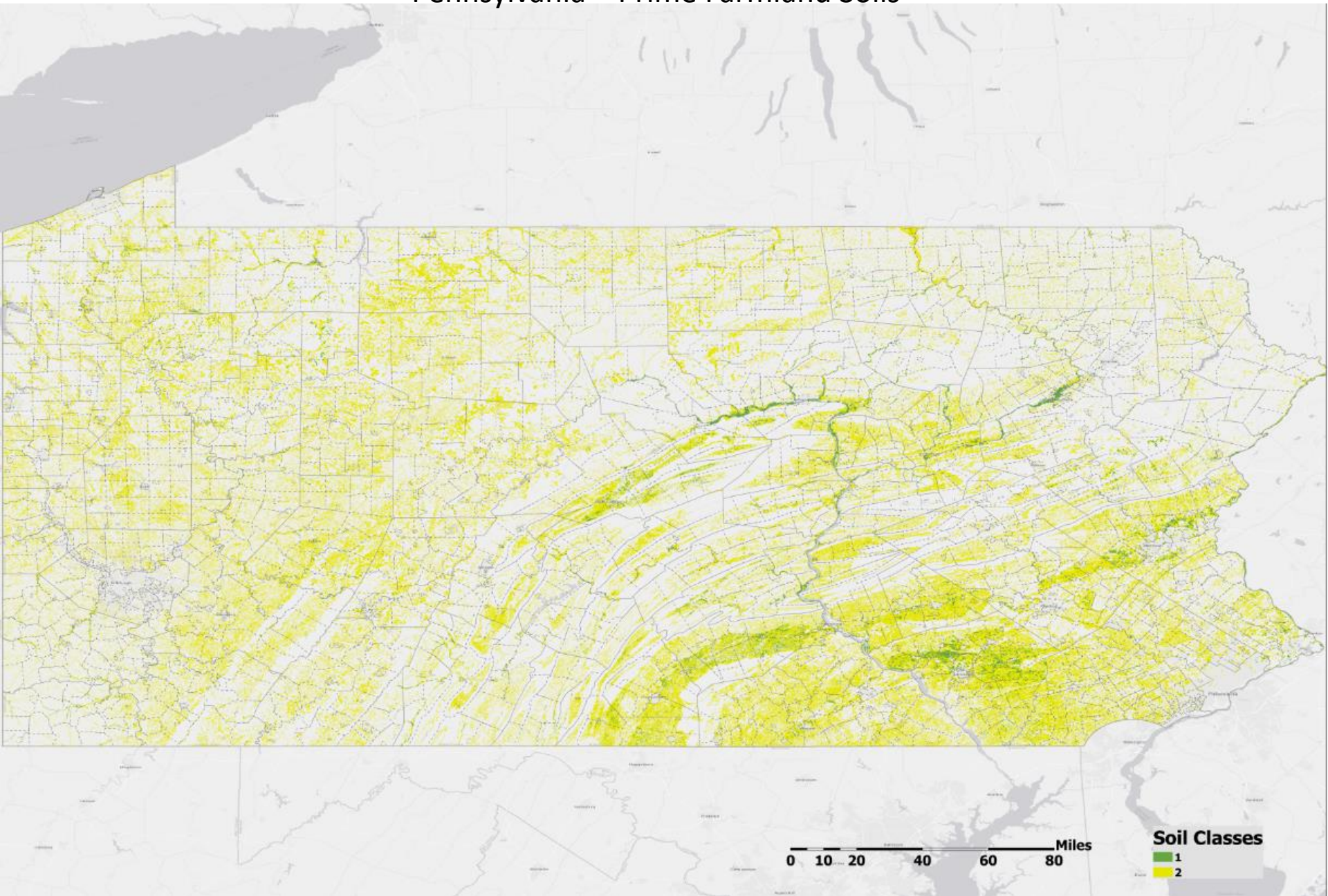


- Agricultural Conservation Easement Purchase Program (state farmland preservation program)
 - Nearly 6,000 farms and over 600,000 acres preserved
 - 58 participating county programs (roughly half administered by conservation districts)
 - \$1.7 billion investment
 - Conservation plans required for all farms
 - USDA-NRCS partnerships
 - Agricultural Conservation Easement Program (ACEP)
 - Regional Conservation Partnership Program (RCPP)
 - Fall 2021 RCPP proposal
- Agricultural Security Area Program (ASA)
- Clean and Green Preferential Assessment Program

Preserved Farmland in Pennsylvania 2021



Pennsylvania – Prime Farmland Soils



- Interdepartmental Commission (PDA & DEP)
- Resource Enhancement and Enhancement Tax Credits (\$13 million)
 - AG BMPs and equipment (no-till, manure injection, precision Ag.)
 - \$250,000 per farm in any 7-year window
 - Unique “sponsorship” opportunities
 - Covers “out-of-pocket” expenses
 - 50% ... Wide variety of BMPs and no-till equipment
 - 75% ... Plans, ACAs, RFBs (50’), livestock exclusion
 - 90% categories ...in TMDL Watersheds ... RFBs, livestock exclusion, stream crossings, Cover Crops, soil health BMPs (testing), other SCC designated BMPs
 - 15-year rollover and may be sold

- Conservation Excellence Grants
 - Administered by SCC through county conservation districts
 - Priority Locations (7 Tier 1 & 2 counties currently)
 - Priority Practices (livestock exclusion, buffers, stream crossings, off-stream watering, streambank restoration, barnyards/feedlots, manure storage, plans, cover crops, and other SCC designated BMPs)
 - Technical assistance status
 - Applicant’s willingness to accept a “reasonable mix” of grants, tax credits and low interest loans
 - Quick turn-around time
- Agri-Link Low Interest Loan Program
 - \$250,000 cap ... 12 years ... 3 points below market rates
 - Wide variety of eligible BMPs
 - Fall 2021 kick-off