



United States Department of Agriculture



NRCS Financial Assistant Programs

A landscape photograph showing rolling green hills under a cloudy sky. The foreground is filled with a field of wildflowers, including purple and yellow blooms.

April 28, 2022

A graphic element consisting of a large, stylized yellow and white shape that resembles a drop or a leaf, positioned on the right side of the slide.

Natural
Resources
Conservation
Service

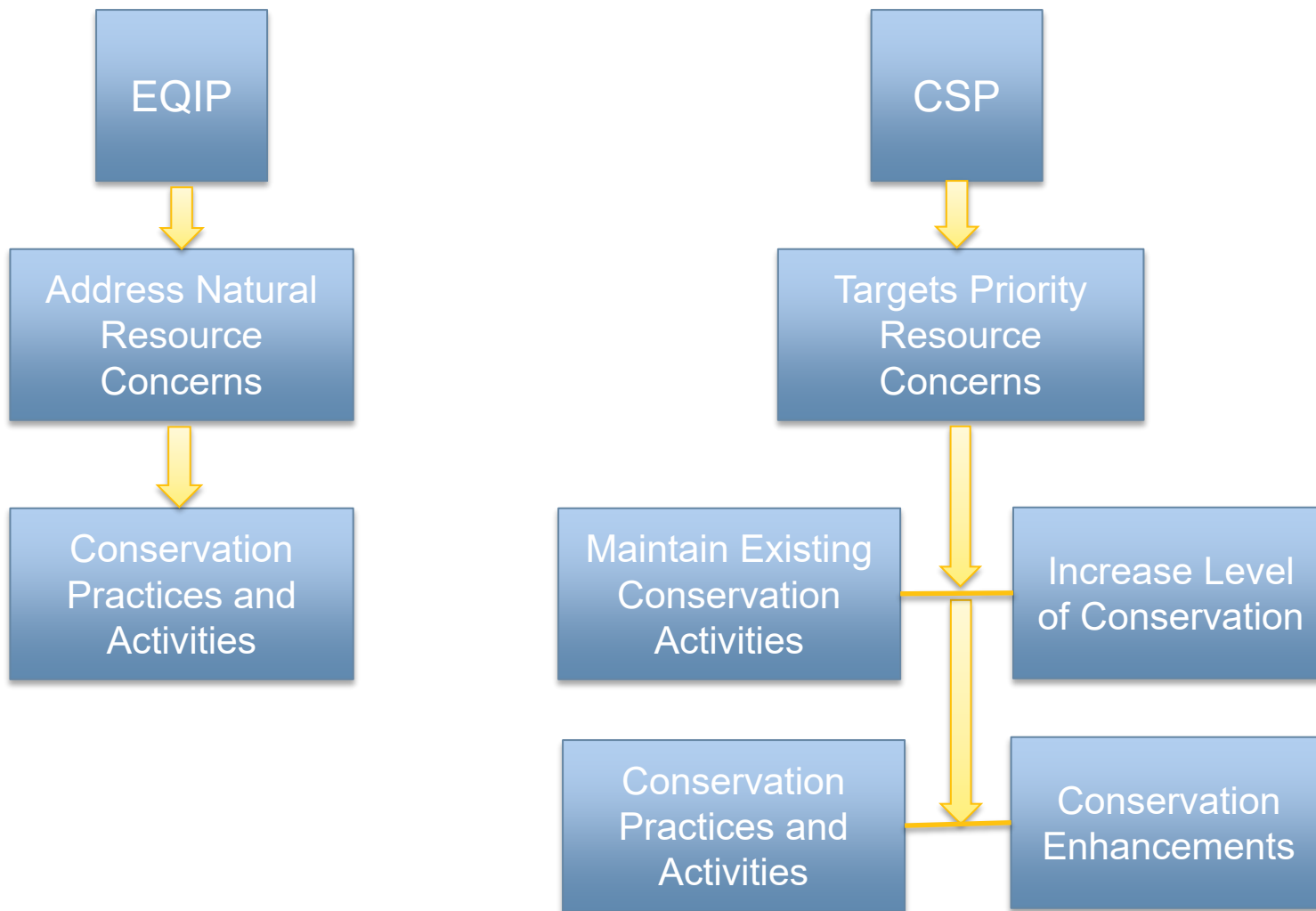
nrcs.usda.gov/

NRCS Financial Assistance Programs

- **Environmental Quality Incentives Program (EQIP)**
- **Conservation Stewardship Program (CSP)**



NRCS Financial Assistance Programs



Natural Resources Conservation Service

nrcs.usda.gov/



Applying for Financial Assistance (EQIP & CSP)

- **Applications accepted on a continuous basis.**
- **State announced sign-up deadline for consideration for funding.**
- **Conservation plan developed to address identified natural resource concerns**
- **Application screening and resource assessment completed, application ranked, and selections for funding completed.**



Natural
Resources
Conservation
Service

nrcs.usda.gov/

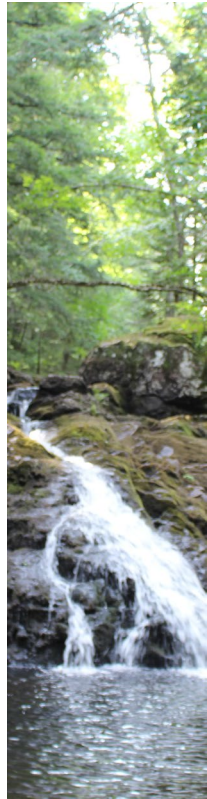


Application Requirements (EQIP & CSP)



Requirements

- **Conservation Program Application (NRCS-CPS-1200)**
- **Compliance with Highly Erodible Land Conservation (HEL) and Wetland Conservation (WC) Certification**
- **File Average Adjusted Gross Income (AGI) (CCC-941)**
- **File Farm Operating Plan (CCC-902)**
- **Farm and Tracts established**



Natural
Resources
Conservation
Service



Participant Eligibility (EQIP & CSP)

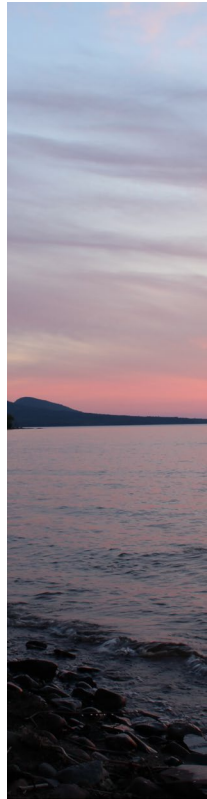


Eligible Applicant

- **Person, legal entity, Indian Tribe, Alaska Native corporation, or joint operation with signature authority**
- **Agricultural production or private forestry management**
 - Owner or renter of land
 - Interest in agricultural products, commodities, or livestock produced by the operation.

Ineligible Applicant

- **Engaged in controlled substance activities including growing marijuana on any part of the agricultural operation.**
- **Unlicensed hemp production**



Natural
Resources
Conservation
Service

nrcs.usda.gov/



Participant Eligibility

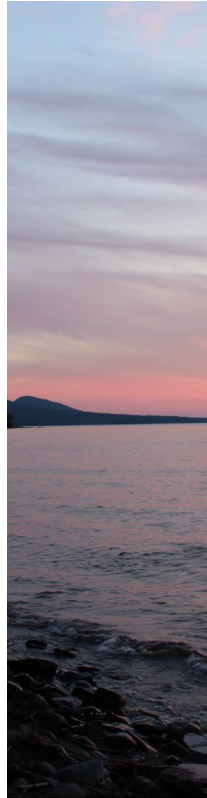


EQIP

- **Agricultural Producer**
- **Does not exceed payment limitations**

CSP

- **Operator, Owner or Other Tenant**
- **Share the risk in producing and marketing of the crop or livestock**
- **Participate in the daily management, administration, and performance of the crop operation**
- **Have control of the land**



Natural
Resources
Conservation
Service

nrcs.usda.gov/



Land Eligibility

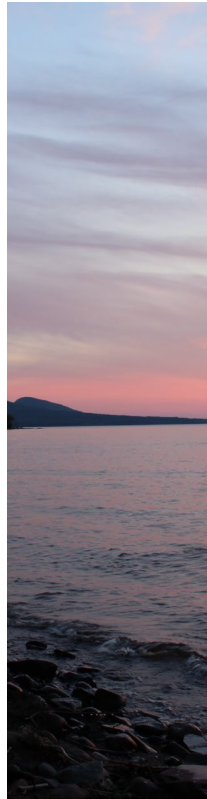


EQIP

- Address an identified resource concern
- Agricultural Land
- Private Forest Land

CSP

- Includes all land in the agricultural operation
- Meets stewardship threshold eligibility requirements
- Agricultural
- Non-Industrial Private Forest Land (NIPF)
- Agricultural Indian Lands
- Associated Agricultural Land
- Farmstead



Natural
Resources
Conservation
Service

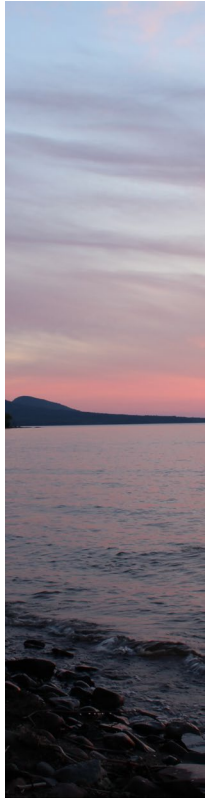
nrcs.usda.gov/



EQIP Ineligible Land



- Land enrolled in Conservation Reserve Program (CRP)
- Land enrolled Wetland Reserve Program (WRP)
- Land enrolled in CSP –Grasslands Conservation Initiative (CSP-GCI)
- Permanently submerged lands



Natural
Resources
Conservation
Service

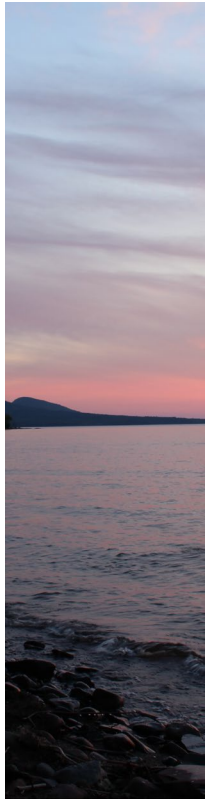
nrcs.usda.gov/



CSP Ineligible Land



- Land enrolled in Conservation Reserve Program (CRP)
- Land enrolled in Wetland Reserve Program (WRP)
- Land in active CSP Contract
- Land brought into production after December 20, 2018
- Newly acquired or newly eligible land where a management system cannot be documented
- Land that effective control will not be maintained through the term of the contract



Natural
Resources
Conservation
Service

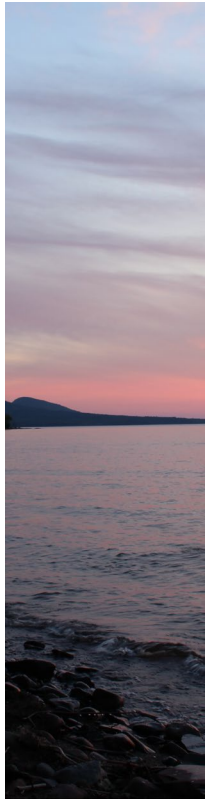
nrcs.usda.gov/



EQIP Ineligible Conservation Practices and Activities

Practice or activity:

- Sole purpose to enhance or protect production without addressing a natural resource concern
- Was previously implemented, unless a higher level of conservation benefits will be achieved
- Was commenced or implemented before the contract was obligated
- Irrigation related practices on land that has not been irrigated at least 2 out of the last 5 years
- Where the primary purpose is renewable energy production
- Practice or activity would cause a negative onsite or offsite impact
- Do not address a resource concern directly tied to eligible land
- Used for improvements to residential buildings or other non-agricultural operation-related structures



Natural
Resources
Conservation
Service



EQIP Contract and Payment Limitations

Authorized to pay up to 75 percent of the practice payment rate and up to 90 percent for historically underserved participants.

\$450,000 - Payment limitation for all contracts entered into from FY 2019 – 2023

\$140,000 - National Organic Initiative, in aggregate with no annual payment limitation

\$900,000 - Joint Operations with approved waiver from the FAPD Director



Natural
Resources
Conservation
Service



CSP Contract and Payment Limitations

Authorized to pay 10 percent of the practice payment rate and 100 percent for enhancement activities.

Cover crop enhancements receive 125 percent of the payment rate

\$200,000 - Payment limitation for all contracts entered into from FY 2019 – 2023

\$40,000 - Annual payment limitation

\$1,500 – minimum contract amount



Natural
Resources
Conservation
Service

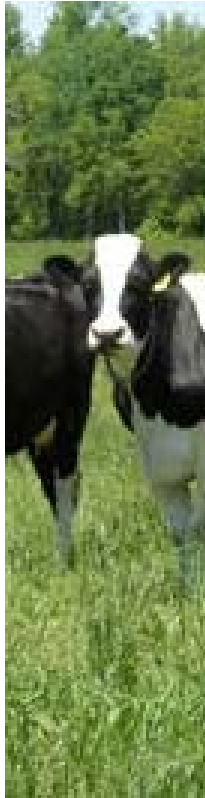


Contract Length



EQIP – 1 to 10 years

CSP – 5 years; with the option to renew in the 5th year of the contract



Natural
Resources
Conservation
Service



Helpful Web Pages



[Farmers.gov](https://www.farmers.gov) – On-line business, forms, program information, etc.

[2022 State Payment Schedules | NRCS \(usda.gov\)](https://www.usda.gov/nrcs) – Eligible practices and payment rates

[USDA Service Center Locator](https://www.usda.gov/service-center-locator) – Find a USDA Service Center

[Programs | NRCS \(usda.gov\)](https://www.usda.gov/nrcs) – NRCS Financial Assistance Programs



Natural
Resources
Conservation
Service

nrcs.usda.gov/





United States Department of Agriculture



USDA is an equal opportunity provider, employer, and lender.

nrcs.usda.gov/