



California
**Department of
Conservation**
Division of Land Resource
Protection

Combating Conversion

California: A case study

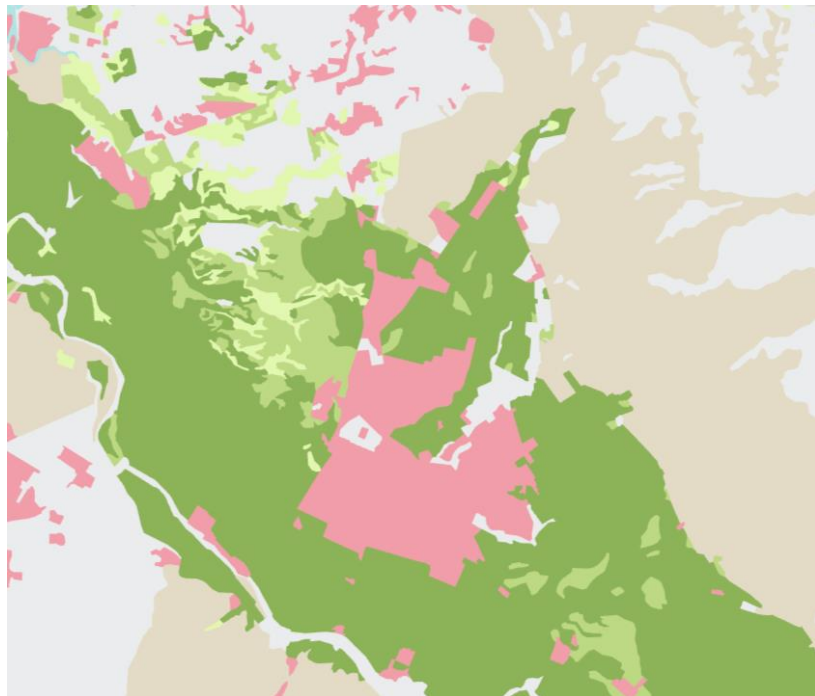
Shanna Atherton-Bauer
shanna.atherton@conservation.ca.gov



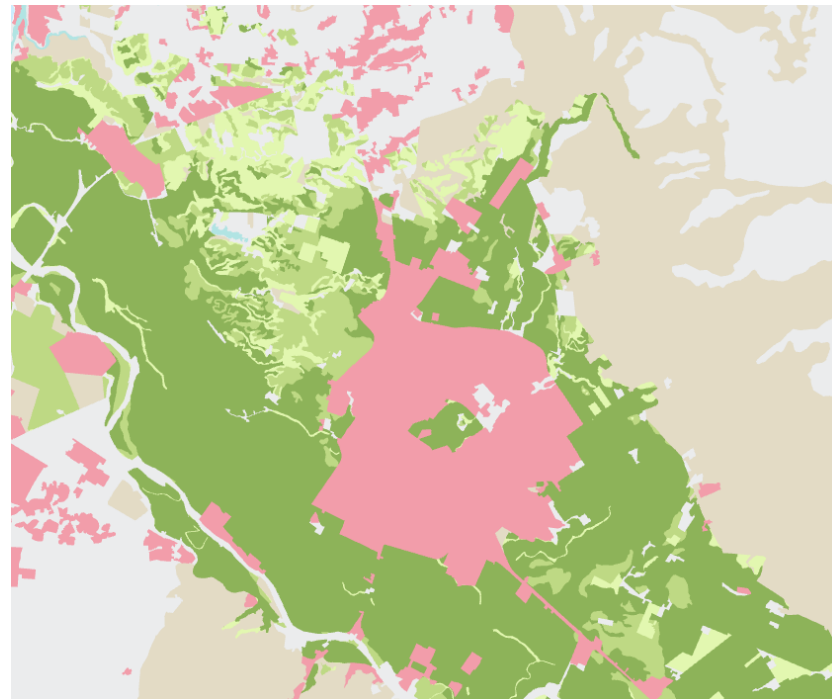
Agricultural Land Mitigation – Monterey County



1984



2020



Agricultural Land Mitigation – Monterey County

- 2010: General Plan requires preparation, adoption and implementation of mitigation program
- 2016: County receives SALC funding to develop program
- March 12, 2024: County adopts mitigation program



Agricultural Land Mitigation – Monterey County

Applies to:

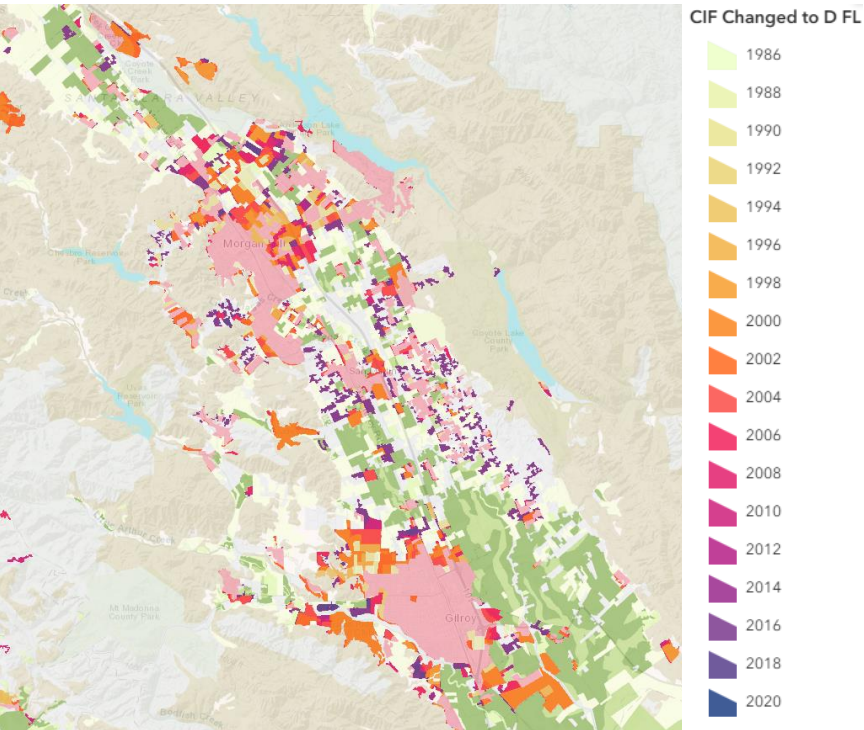
- Rezoning of agricultural land
- Projects requiring a use permit or variance to convert to non-agricultural land

Mitigation options:

- Farmland conservation easement or deed restriction
- In-lieu fees
- Alternative and complementary mitigation (up to 5%)



Conservation Purchasing Program and Regional Framework for Ag Conservation – Santa Clara County



- Map and prioritize agricultural lands for conservation
- Outline a Regional Agricultural Conservation Easement Program
- Develop Ag Conservation Purchasing Program
- Develop Framework for Regional Ag Plan

Objectives:

- Protect the agricultural base
- Promote infill and compact development
- Enhance co-benefits
- Support implementation of a Sustainable Communities Strategy
- Support reduction of greenhouse gas emissions

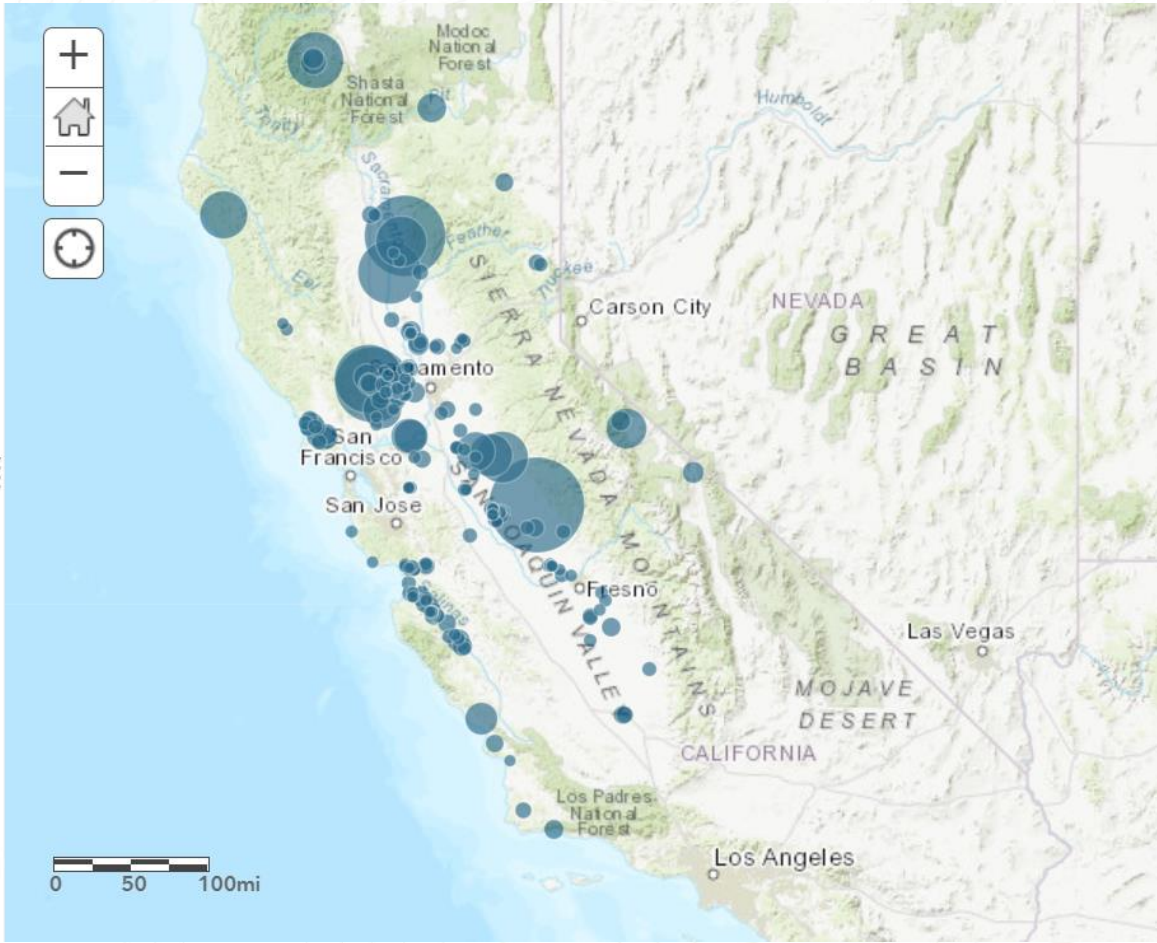
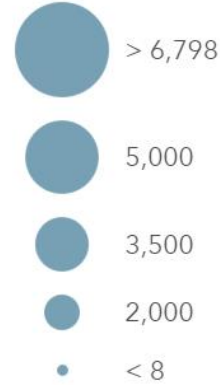


Agricultural Conservation Easements

Legend

Agricultural Conservation
Easements

ACRES



Land Conservation Act of 1965 – “Williamson Act”

- Reduced Property Tax for Land Conservation
- Voluntary contracts
- 10-20 year contracts
- Contract renew annually
- Contract runs with the land
- 13 million+ acres protected





THANK YOU