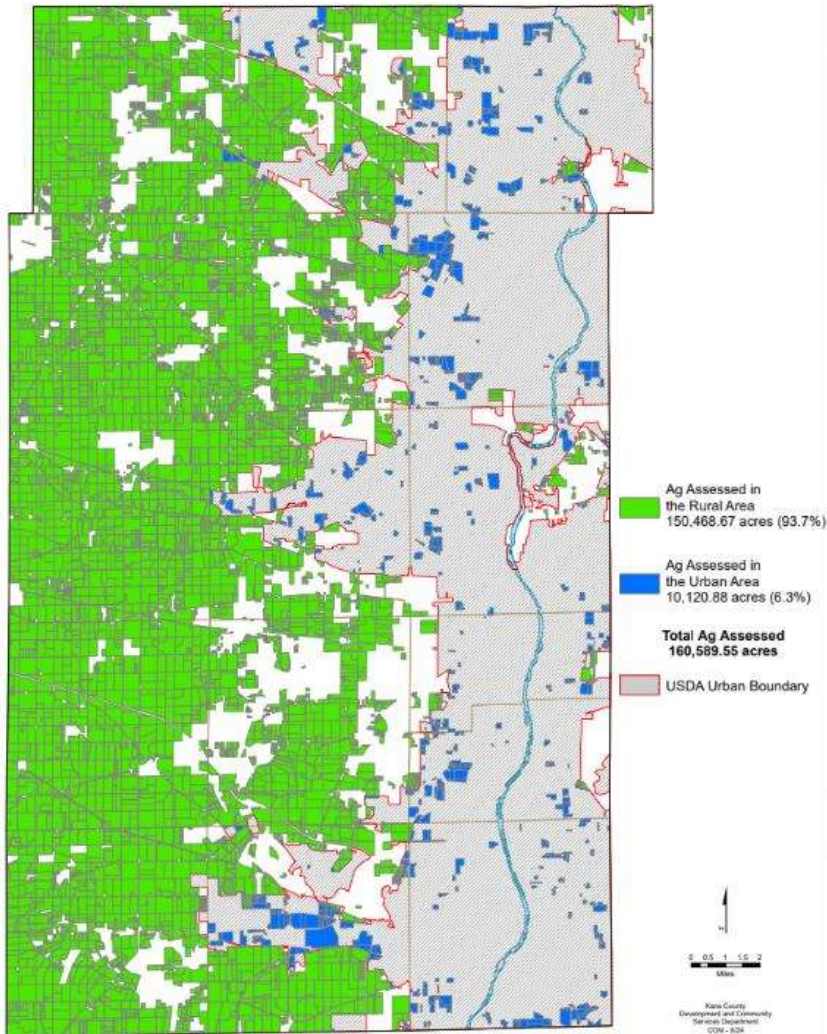


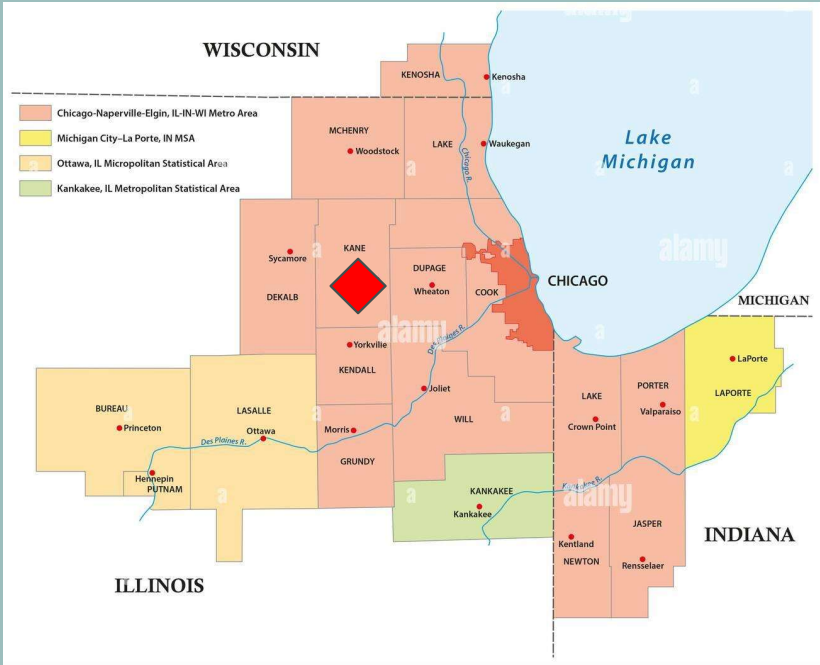
### Ag Assessed Parcels by USDA Rural/Urban Boundaries

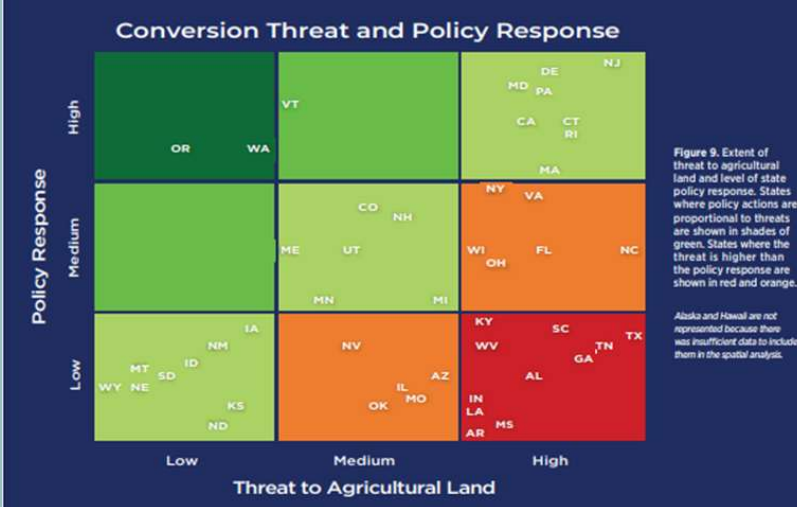
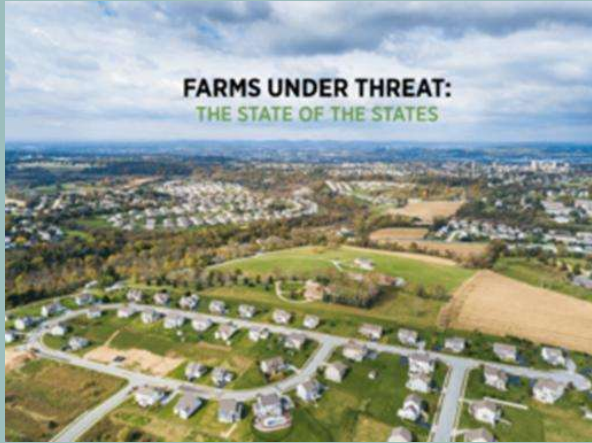
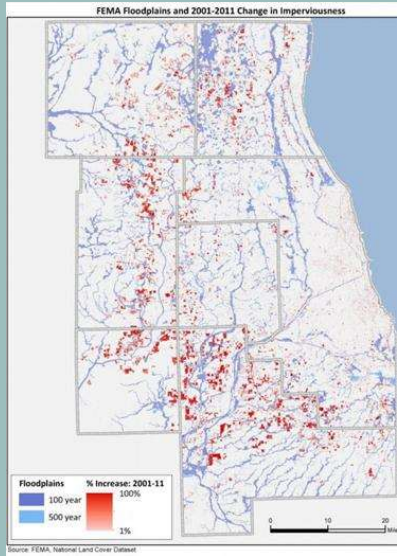
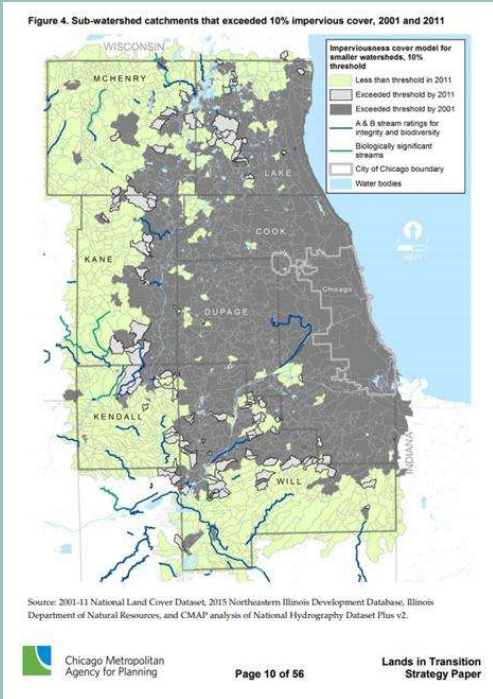
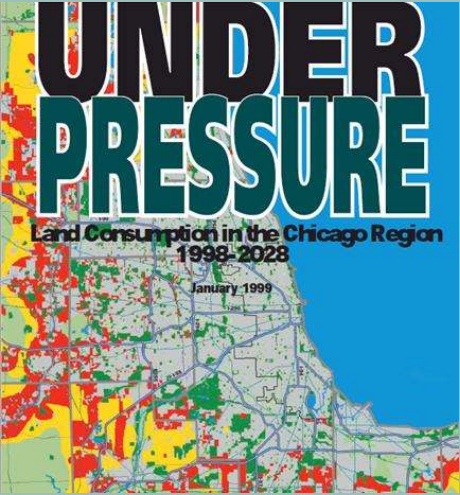


## KANE COUNTY, ILLINOIS FARMING AT THE METROPOLITAN EDGE

Current Ag land use in urban/suburban area =  
**10,120 acres**

Current Ag land use in rural area of the county =  
**150,469 acres**





# Land Consumption Warnings



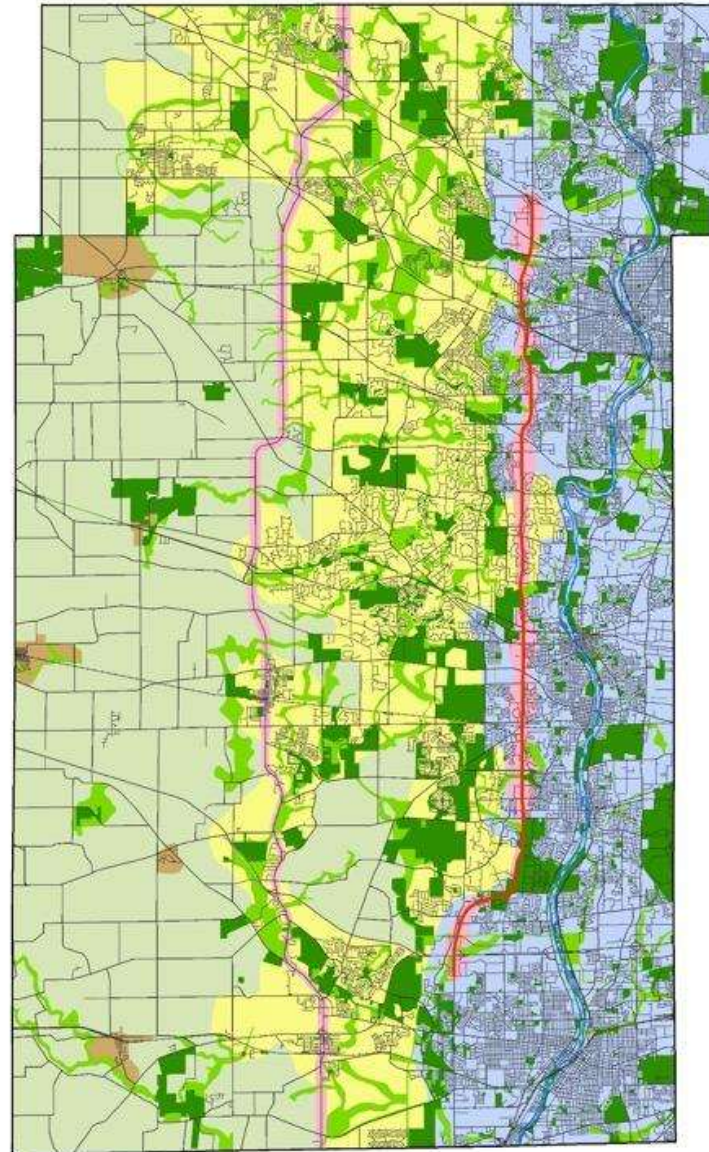
# Grounded in land use policy and plans

## Implementation of the Plan

- **Solid foundation**
- **Adjusted over time**

Ordinance 01-67 Creating the program:

- Survived and been embraced by 4 County Boards Chairs and turn-over of the county board
- Had companion ordinances including:
  - Historic Farms
  - Local food production and offering term easements
  - Protected Ag- Limited Development Land Use category



**Sustainable Urban Area /  
Randall Road Corridor**



**Critical Growth Area /  
Rt. 47 Corridor**



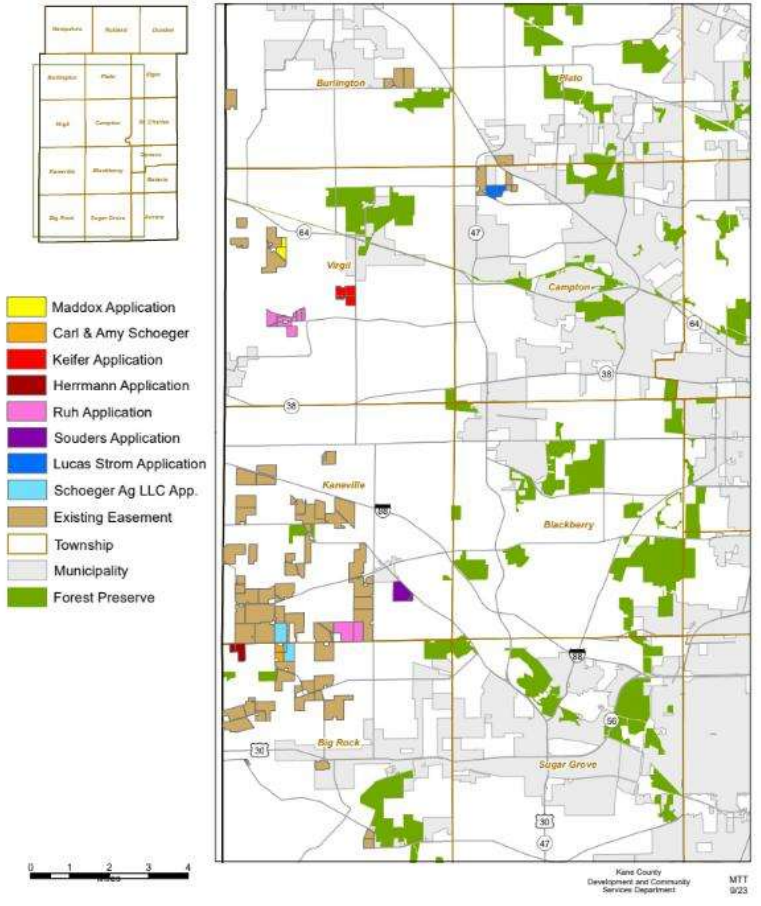
**Agricultural / Food, Farm  
and Small Town Area**



**Existing Open Space**



**Proposed Open Space**



- Number of protected farms sold: 6 of 34
- Number of protected farms sold to neighbors or family: 5 of 6
- Number of protected farms sold to program participants: 4 of 6
- 1031 exchanges at closing: estimate 90% for at least portion of proceeds
- Number of donated easements: 2
- Smallest farm protected – 4 acres



- ### Benefits:
- Land protection
  - Family and local business retention
  - Public/Private partnership
  - New development model: Protected Ag - Limited Development
  - Accommodate all farms all locations
  - Equity and Political Support

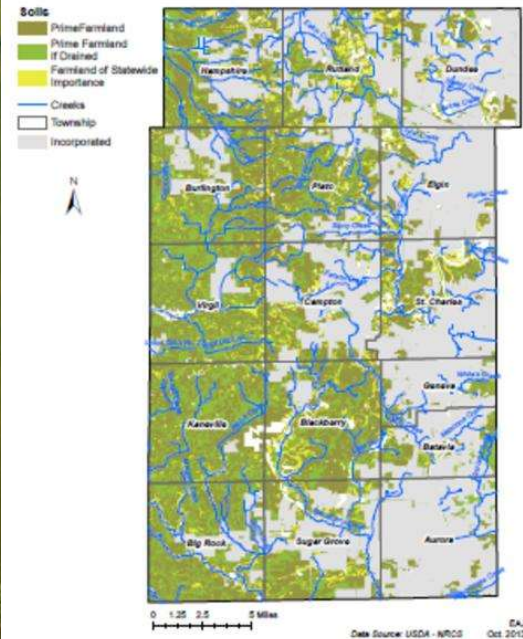


Top Outcome



No county board decision to reduce or remove ag policies or plan after farmland program approved

Kane County Prime Farmland

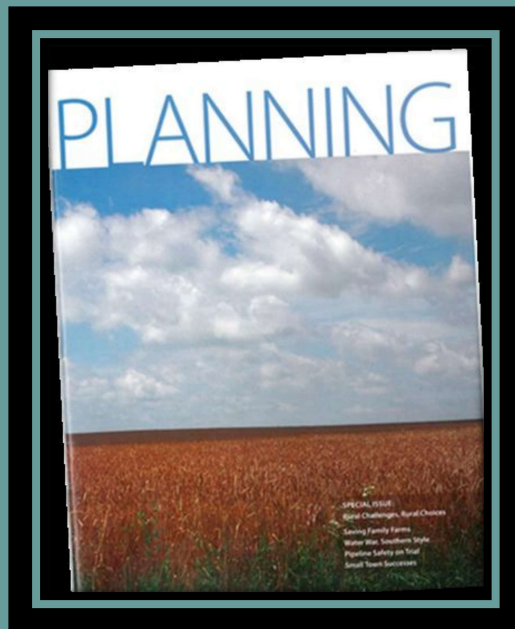






# KANE COUNTY LOCAL FOOD AND FARM PROGRAM

- Kane County Farmland Protection Program
  - Ordinance 01-67
- Growing for Kane Local Foods Program
  - Ordinance 13-10



# Timeline of Kane Farm and Food Pivotal Policies

## State / Regional



**The Working Lands, Water and Wildlife Conservation Partnership—Illinois**

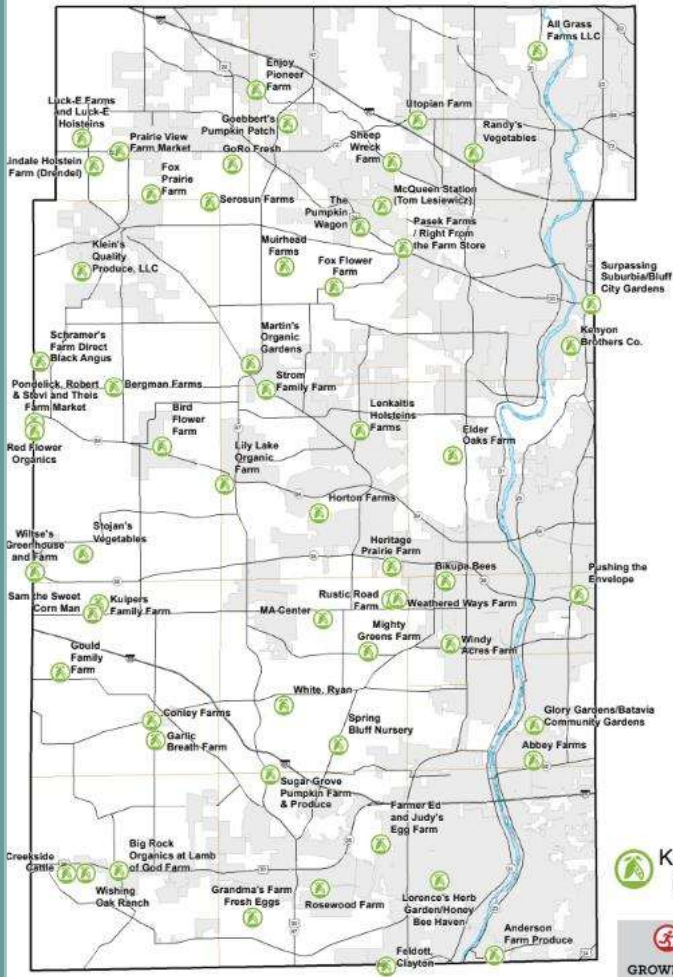
**What it is:**  
 The Working Lands, Water and Wildlife Conservation Partnership is a collaborative public-private partnership that is supported by USDA NCSU Regional Conservation Partnership Program (RCPP). The partners work to manage conservation investments and address shared natural resource goals. We prioritize farms located along waterways and near existing natural areas within the project geography. We encourage projects that benefit producers and meet the USDA definition of fiscally independent producers and operations. All projects are identified by the following natural resource concerns:

- Inadequate Habitat for Wildlife Species
- Long-Term Wetland Protection
- Water Quality Concerns: Excess Field Nutrients and Sediment Loss

**Why it Matters:**  
 One of the most fertile and densely farmed states and home to some of the world's most productive soils, the state, expanding suburban and rural residential growth is consuming prime farmland - Illinois has lost over a billion acres of farmland since 1982. Natural areas in Illinois are highly fragmented and our vulnerable wildlife species need better and more connected habitat to thrive. Strong agricultural land stewardship is a major responsibility that ensures our production system can meet the Midwestern farmer and consumer's growing needs for the full life cycle. Maintained and protected farmland, water and wildlife are critical solutions to address these particular needs.



# Growing for Kane Producers



Kane County Producers

**GROWING FOR KANE**  
HEALTH - ECONOMY - FRESH FOOD



**GROWING FOR KANE**  
HEALTH - ECONOMY - FRESH FOOD

## HEALTH IMPACT ASSESSMENT

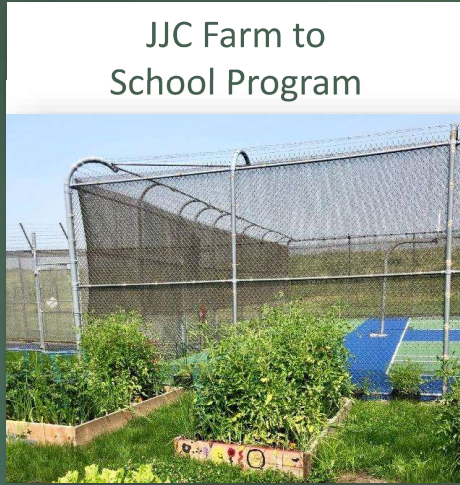
EXECUTIVE SUMMARY

Kane County Health Department  
Kane County Development + Community Services Department



# Growing for Kane Projects

JJC Farm to School Program



Farmer Relief Mini-Grant Program



Kitchen Equipment Grant Program



The cover of the 'Food Hub Feasibility Study' report for Kane County, IL. The top section features three images: a red barn, a close-up of green zucchini, and a close-up of red tomatoes. Below the images, the title 'Food Hub Feasibility Study' is written in white on an orange background, followed by 'Kane County, IL' in a smaller font. At the bottom, it says 'OCTOBER | 2016' and 'Summary Report'.





# Funding Successes

## Farmer Mini Grant Program

Coming soon: accepting applications from farmers that grow food



## Farming with Pollinators:

A Growing for Kane Project at the St. Charles Horticulture Center



## Regional Conservation Partnership Program

\$500,000 towards Kane farmland easements





REGIONAL OFFICE OF EDUCATION  
KANE COUNTY



**GROWING FOR KANE**  
HEALTH - ECONOMY - FRESH FOOD



KANE COUNTY COURT SERVICES  
JUVENILE JUSTICE CENTER

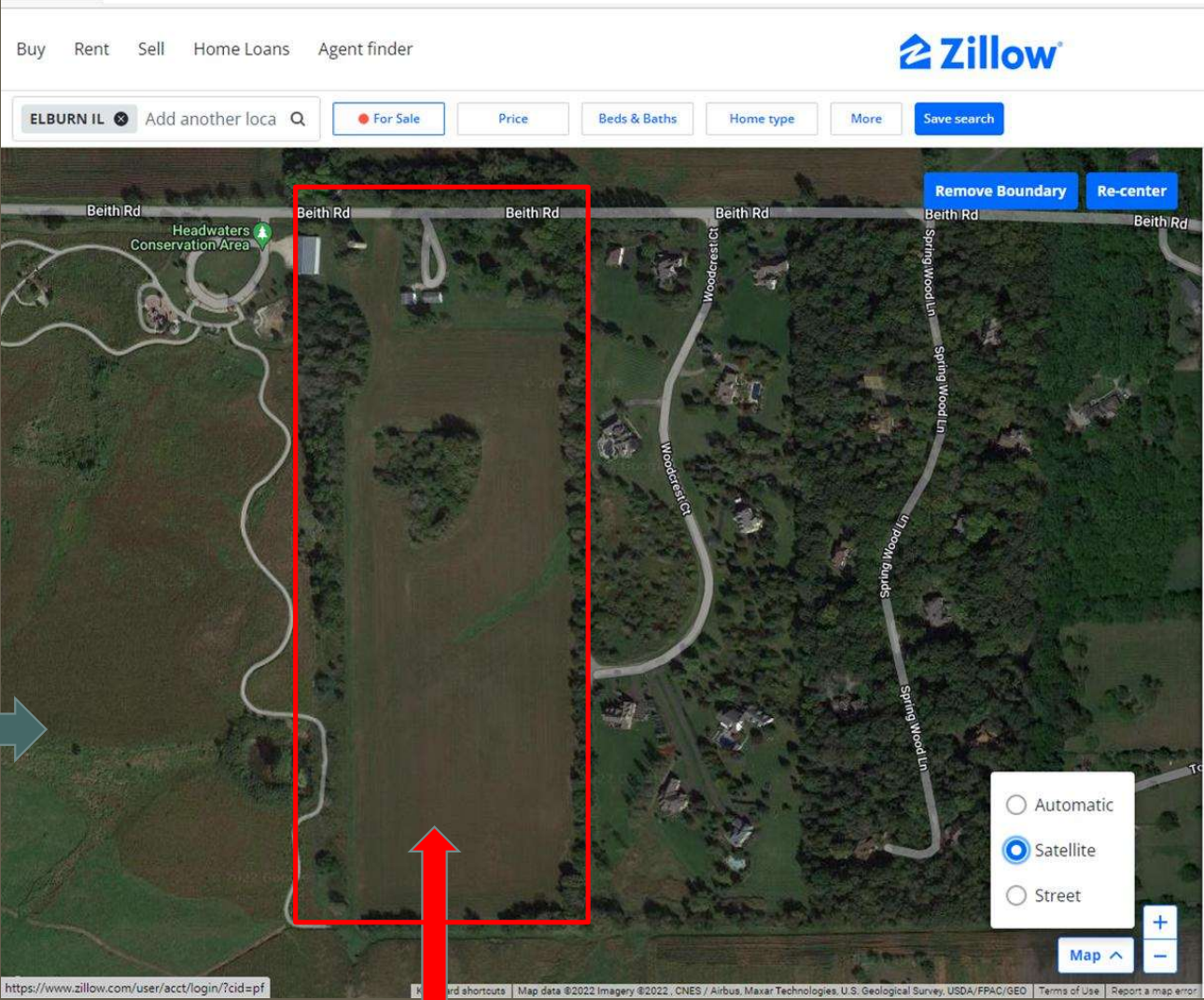


**KANE COUNTY  
FARM BUREAU®**  
Farm. Family. Food.™



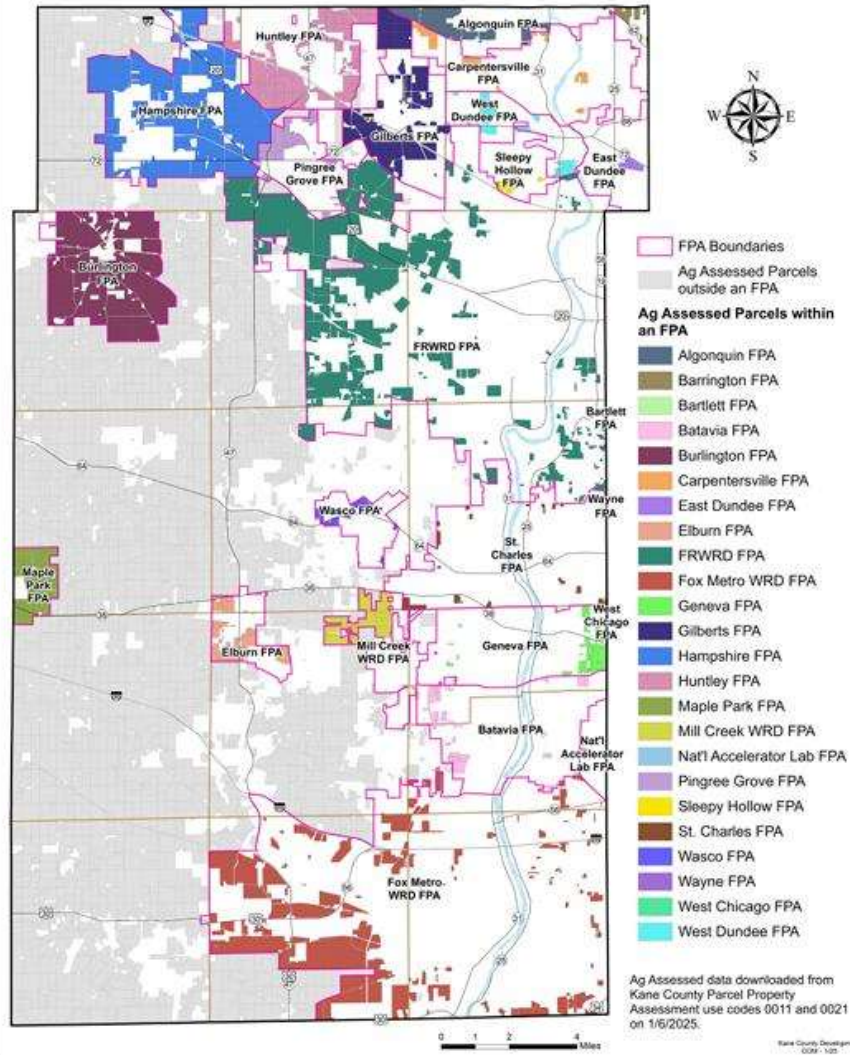
Today's challenge: limited land opportunity and price

Permanently protected open space adjacent



Available Parcel

## Kane County Facility Planning Areas (FPA) and Ag Assessed Parcels





## Partnerships and Support from AFT through the years:

- Concept paper for Agriculture Conservation Easements in Kane
- White paper in support of Agriculture Conservation Easements in Kane
- Analysis, report and recommendation for local food production in Kane
  - Health Impact Assessment, Julia Freedgood
  - Soil Stewardship grant and partnership
    - Land Transfer Navigator Program

For more information contact: Janice Hill, AICP, Acreage43560, LLC Food and Farm Consultant

[Acreage43560@gmail.com](mailto:Acreage43560@gmail.com)

Sarahy Castro, Kane County Farmland Preservation Administrator, [CastroSarahy@kanecountyil.gov](mailto:CastroSarahy@kanecountyil.gov)