

Planning for Agriculture and Easements

Midwest Easement Toolkit Webinar Series



American Farmland Trust

SAVING THE LAND THAT SUSTAINS US



PROTECT FARMLAND



PROMOTE SOUND FARMING PRACTICES



KEEP FARMERS ON THE LAND

**No Farms
No Food®**


American Farmland Trust

Wisconsin Farmland Protection Partnership





Wisconsin Farmland
Protection Partnership



Agricultural
Conservation
Easements



Land
Management

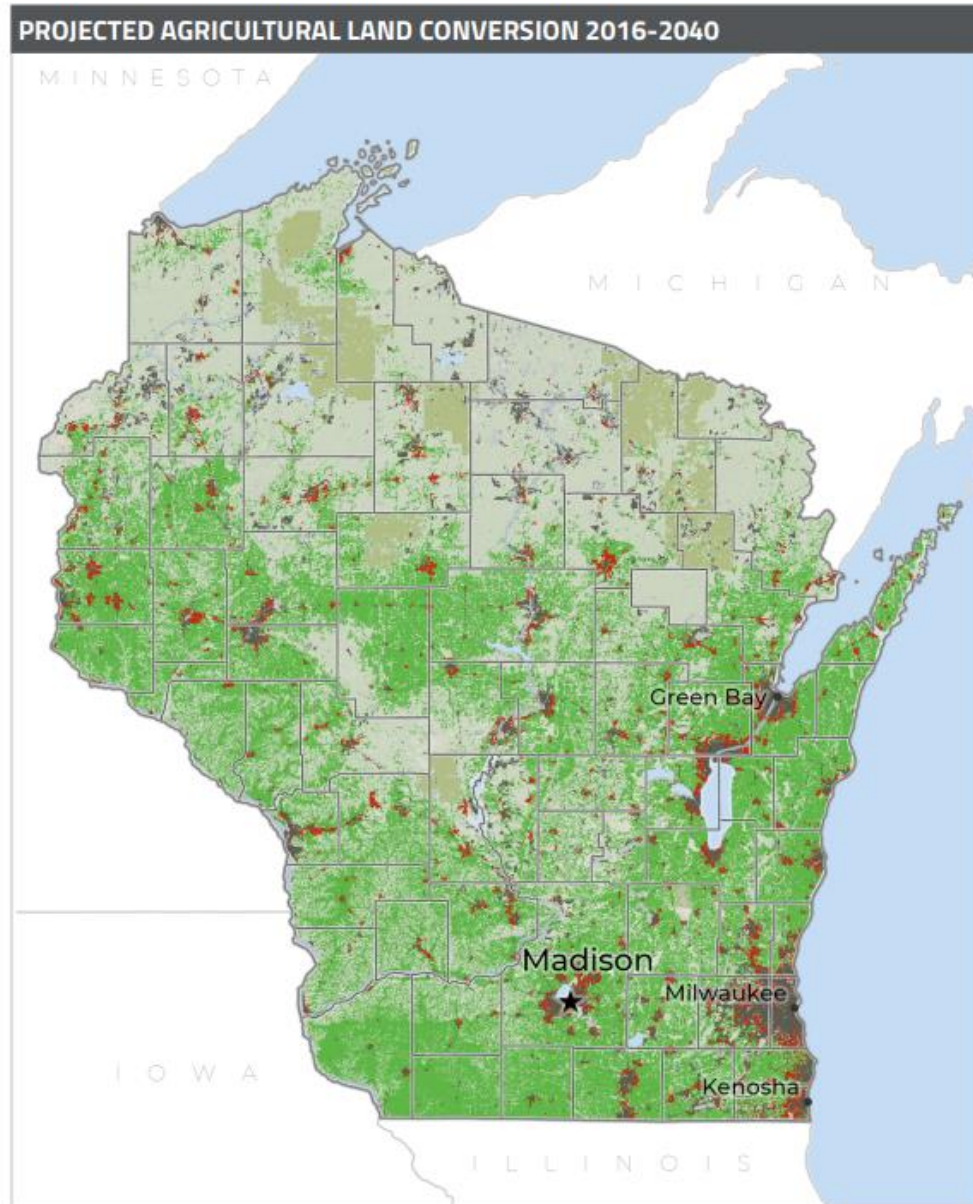


Outreach &
Education



Demonstration
Sites

Projected Conversion 2016-2040



Wisconsinites will pave over, fragment, or compromise

515,200 acres
of farmland.

That's the equivalent of losing

2,400 farms,
\$377 million
in farm output, and
6,400 jobs
based on county averages.¹

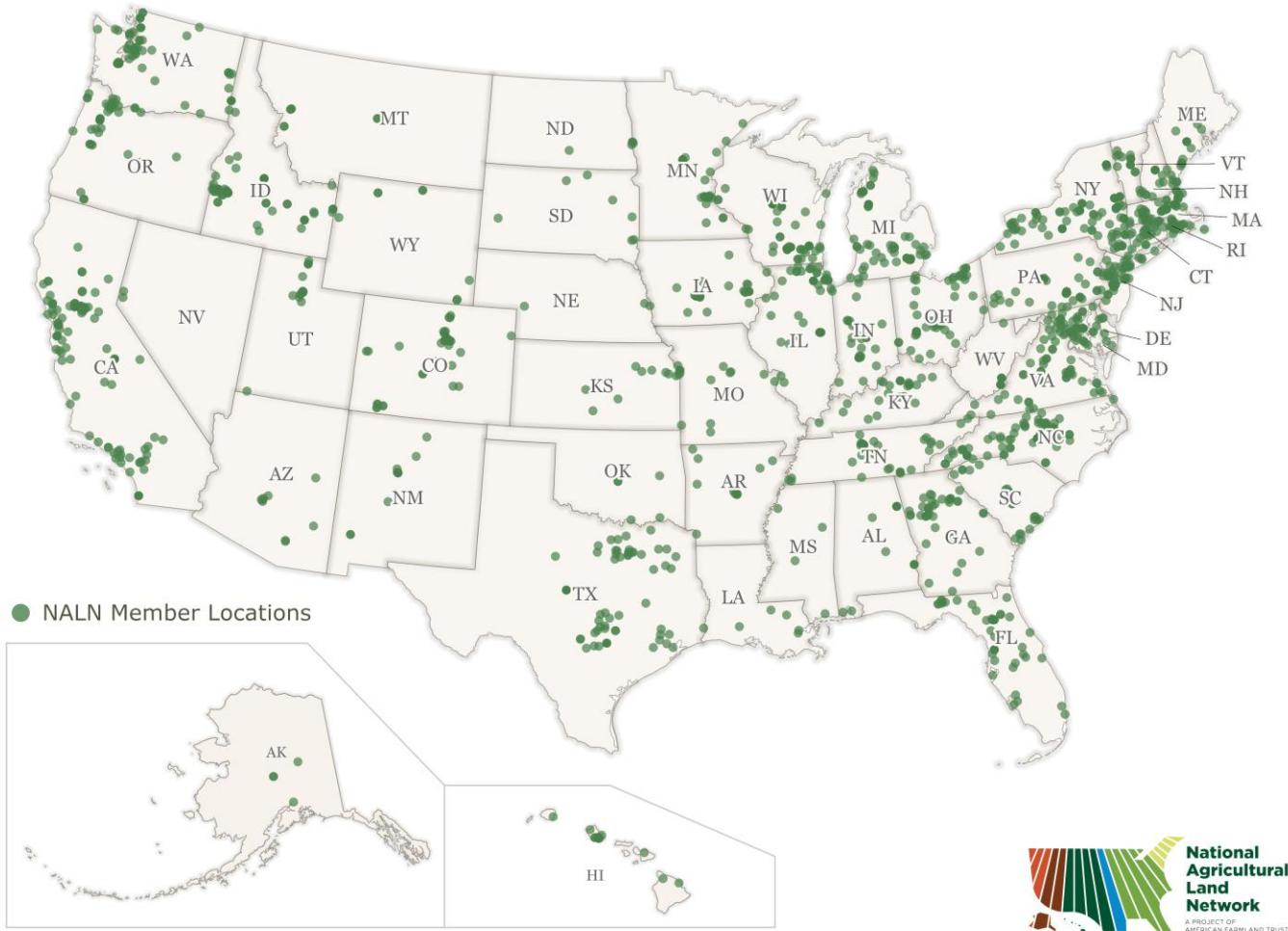
67% of the conversion
will occur on Wisconsin's
Nationally Significant land.²

Hardest-hit counties:

- ▶ **Dane**
- ▶ **Waukesha**
- ▶ **St. Croix**

The National Agricultural Land Network (NALN)

National Agricultural Land Network (NALN) Members as of December 2025



- Membership in the Network is free, and people can sign up as an individual or as an organization where all staff are eligible for benefits
- NALN products and services include:
 - Informational Webinars
 - Agricultural Conservation Easement Program- Agricultural Land Easements (ACEP-ALE) Resources and Support
 - Workshops
 - State, Regional, and Topical Roundtables
 - Online Community Platform & Resource Library
 - Monthly Network Newsletter
- Access 1,600+ like minds by joining the NALN at <https://farmland.org/national-agricultural-land-network>
- **Join the NALN BPS community today for details on the next quarterly BPS roundtable.**

Land Transfer Navigators (LTN)

- Multi-year initiative in partnership with the NALN and NRCS, focused on farm transfer
- Offering grants to farmers and ranchers
- Training service providers as "Navigators" to provide direct 1:1 support
- Building regional networks to strengthen local support
- Launching a virtual transfer resource hub with tools, guidance, and stories from farmers

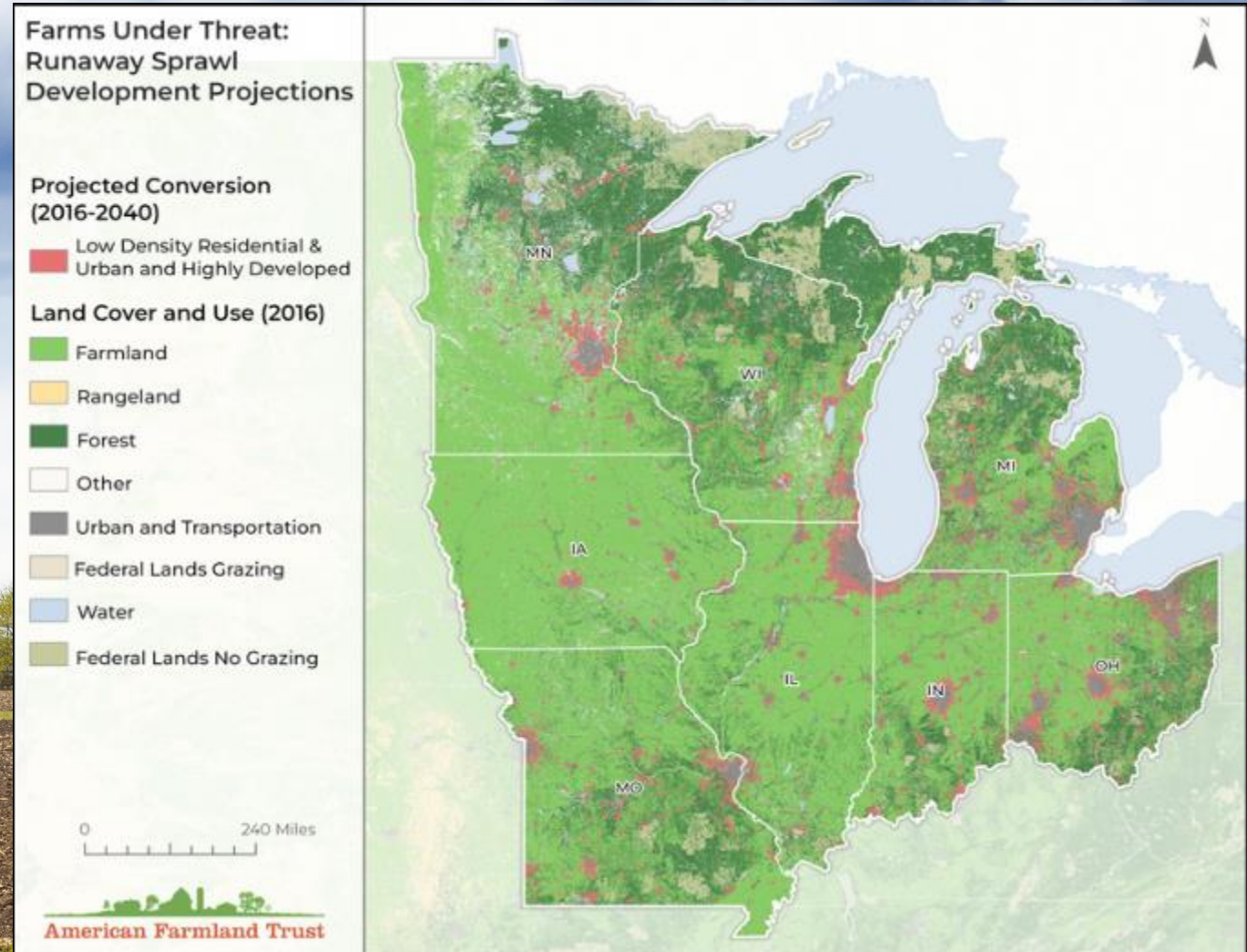


Why protect farmland?

We are losing our best farmland. Forever.

Protection Toolbox

- **Agricultural conservation easements**
- Succession planning
- Land access
- Viability programs
- **Planning for agriculture**



Agricultural Conservation Easements

- A voluntary legal agreement between a landowner and a conservation organization or governmental agency
- Keeps land available for farming and ranching
- Limits certain uses and activities that are not compatible with agriculture
- Most are permanent



Why plan for agriculture?

Just like we plan for housing, roads, and business districts, we need to plan for working lands, the land that feeds us, supports rural economies, and anchors local food systems.



MIDWEST EASEMENT TOOLKIT

Wednesday Webinar Series

May 20th

*Farmland Protection for
the Future*

10-11:30 AM CT

REGISTER TODAY